

# PAPER 3 LISTENING

## PART 1 Questions 1-7

For each question, choose the correct answer.



Play audio

1. What will they eat?



A ☐



B ☐



C ☐

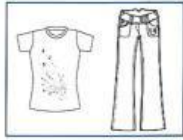
2. What will the girl wear to the party?



A ☐



B ☐



C ☐

3. Where will the student's tour of the city centre end?



A ☐



B ☐



C ☐

4. Where was the boy's hat?



A ☐



B ☐



C ☐

5. What will they do on Friday?



A ☐



B ☐



C ☐

6. What was wrong with the boy?



A ☐

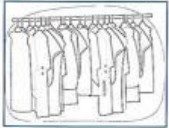


B ☐



C ☐

7. What is on special offer today?



A ☐



B ☐



C ☐

**PART 2 Questions 8-13**

For each question, choose the correct answer.

**8. You will hear two friends talking about a neighbour's dog.**

The boy thinks the dog

- A. needs more walks.
- B. is left alone for too long.
- C. is unfriendly.

**9. You will hear two friends talking about a film.**

Why did the girl leave the cinema early?

- A. She had an appointment with her dad.
- B. She didn't like the film.
- C. She felt unwell.

**10. You will hear two friends talking about the maths lesson.**

What do they agree on?

- A. They don't like the teacher.
- B. The work is getting harder.
- C. They won't pass the exam.

**11. You will hear two friends talking about a school trip they went on.**

What happened?

- A. There was a change of plan.
- B. Their teacher got angry.
- C. The students were disappointed.

**12. You will hear two friends talking about a football match.**

Who was the boy angry with?

- A. the coach
- B. the players
- C. the fans

**13. You will hear two friends talking about a new leisure centre.**

What did the boy like most about it?

- A. the design of the building
- B. the gym's equipment
- C. the swimming pool

**PART 3 Questions 14-19**

For each question, write the correct answer in the gap. Write **one or two words** or a **number** or a **date** or a **time**.

You will hear a teacher telling a group of students about a geography trip.

**School Geography Trip**

Date of Geography trip: Wednesday (14) \_\_\_\_\_

Each group will be given: a (15) \_\_\_\_\_

Length of walk: (16) \_\_\_\_\_

Person responsible for health issues: (17) Mr \_\_\_\_\_

Type of shoes to wear: (18) \_\_\_\_\_

Coach arrives at school at: (19) \_\_\_\_\_ p.m.



Play audio

**PART 4 Questions 20-25**

For each question, choose the correct answer.

You will hear an interview with a young teacher called Carol.



Play audio

**20. Who inspired Carol to become a teacher?**

- A. her parents
- B. her drama teacher
- C. her classmates

**21. What is the most important thing about being a teacher, according to Carol?**

- A. show how much they know about their subject
- B. be more intelligent than their students
- C. communicate well with their students

**22. What does Carol have her students do if they aren't working well?**

- A. extra homework
- B. a written test
- C. physical exercise

**23. How does Carol feel about her career as a teacher?**

- A. proud
- B. anxious
- C. disappointed

**24. Carol's parents**

- A. are disappointed with what she has achieved so far.
- B. are very satisfied with her career progress.
- C. feel sorry they didn't let her become an actor.

**25. What does Carol want to do in the future?**

- A. be a headteacher
- B. continue to teach
- C. do some acting