

QUIZ #2

DESCRIBING ANIMALS



AHMAD ABDUL AZIZ MUSLIM
SMP NEGERI 1 FAKFAK



 LIVEWORKSHEETS

2

HELLO!

Nama: -----

Kelas:-----



 LIVEWORKSHEETS

WATCH THE FOLLOWING VIDEO!
DO THE INSTRUCTION THAT FOLLOWS!

3

MENTION ANIMALS THAT YOU SEE IN
THE VIDEO!



LIVEWORKSHEETS

MATCH THE ADJECTIVES WITH THEIR
MEANING IN BAHASA INDONESIA!

4

CUTE

WILD

BIG

LONG

FAST

DANGEROUS

SHORT

SAFE

TAME

SLOW

UGLY

SMALL



LIVEWORKSHEETS

HEAVY

SMALL

STRONG

SLOW

LONG

FAST

DRAG AND DROP THE ADJECTIVES
THAT SUITE TO THE ANIMALS!



LIVEWORKSHEETS

LISTEN TO THE SOUND OF THE ANIMALS!

6

PLAY MP3

WRITE 3 ANIMALS YOU HEAR!



LIVEWORKSHEETS

IT IS A WILD ANIMAL. IT LIVES IN JUNGLE.
IT IS BIG. IT HAS LONG NOSE.
IT HAS FOUR LEGS. IT HAS FOUR WIDE EARS.
IT EATS LEAVES AND NUTS.
IT CAN RUN FAST TOO.

IT IS A/AN

A. LION

C. GIRAFFE

B. TIGER

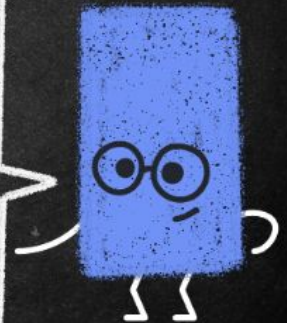
D. ELEPHANT



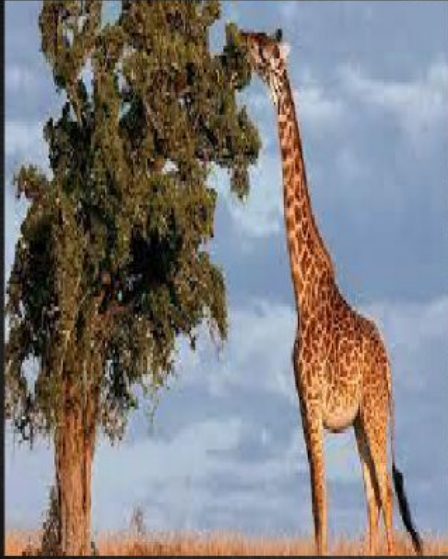
LIVEWORKSHEETS

IT IS A WILD ANIMAL.
IT LIVES IN NILE RIVER MOSTLY.
IT IS HEAVY. IT HAS BIG WIDE MOUTH.
IT HAS FOUR LEGS. IT LIKES TO PLAY IN WATER.
IT EATS GRASS.
IT CAN RUN ON LAND.
IT CAN SWIM ON WATER.

IT IS A/AN



LIVEWORKSHEETS



CHOOSE ADJECTIVES TO
DESCRIBE THE ANIMAL!



SMALL



SHORT



TALL



BIG



TAME



WILD

