

Name .....

## Revision - Module 2

### Vocabulary and Grammar

#### 1. Fill in the missing word.

1. At the age of 65, he .....from work.
2. She specialises ..... the history of the Tudor period.
3. The offices are in the city ..... .
4. My parents used to give me pocket- ..... every week when I was young.
5. The taxi ..... knew a shortcut to the airport, so luckily we didn't miss our flight.
6. She ..... a living by working for an insurance company.
7. I haven't seen my parents ..... Christmas.
8. Make yourself ..... home.
9. There's definitely no ..... like home.
10. I don't make a lot of money so I can't ..... an expensive car.

#### 2. Circle the correct item.

1. He's called her ten times already and insists on speaking to her. He's very ..... .  
A. patient  
B. persuasive  
C. persistent
2. The government has decided to increase the monthly ..... of civil servants.  
A. wage  
B. salary  
C. money
3. The company has more than one owner; there's Mr Peters and his two .....  
A. colleagues  
B. employees  
C. partners
4. All of their vegetables are home- ..... .  
A. grown

B. made

C. done

5. How ..... have you been working here?

A. many

B. much

C. long

### English in Use

**3. Complete the second sentence using the word in bold. Use two to five words including the word given. Do not change the word given.**

1. Claire couldn't eat the soup as it was very hot.

too        The soup ..... Claire to eat.

2. I asked her if she needed any more information.

else        I asked her if ..... she needed to know.

3. Tom does not usually lose his temper.

like        It is ..... to lose his temper.

4. When I got up on stage I forgot everything I was going to say.

anything    When I got up on stage ..... I was going to say.

5. Their office was too small to have a meeting with ten staff.

not        Their office ..... have a meeting with ten staff.

**4. Fill in the correct word derived from the word in bold.**

1. The manager asked her ..... questions about her qualifications.

**VARY**

2. The interior ..... she hired was full of bright ideas.

**DESIGN**

3. Before the ..... of the telephone, communicating over great distances was slow and difficult.

**INVENT**

4. .... is more than a feeling, it is a state of mind.

**HAPPY**

5. Ben's car was old and ..... so, he decided to buy a new one.

## RELIABLE

### Reading

# Make Your Home Greener

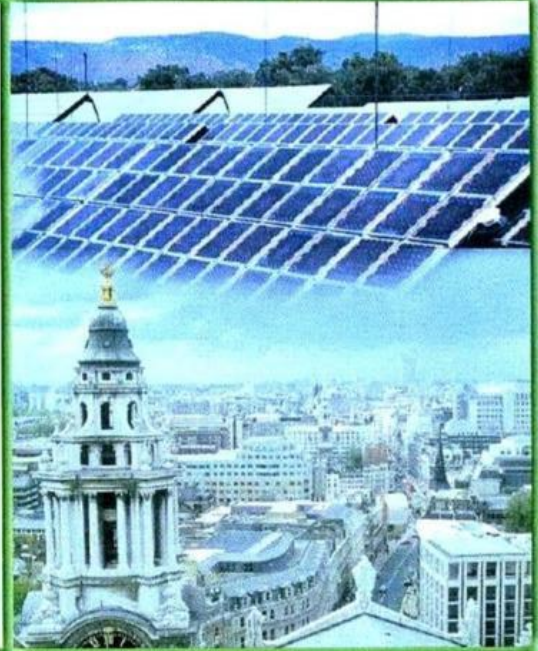
Residential buildings are responsible for consuming 27% of the total amount of energy consumed within Europe and are the biggest source of global warming in the world. This is a fact that has, until recently, been overlooked by law-makers trying to reduce greenhouse gas emissions, who have concentrated their efforts on industry and transport. The EU has now issued a new directive which intends to cut carbon dioxide emissions from buildings by 45 million tons before 2010. This means that each of us can now save the planet from the comfort of our own homes.

The first things we can do are simple and easy. We can block up draughts, switch off unnecessary lights and make sure taps are not left running. The next step requires more planning and some expense, but as well as saving energy, we will also save on bills.

Many homes have loft insulation, but it is rarely enough. Most insulation is 100mm thick, but to be truly effective the recommended thickness is 200-300mm. Full insulation can have a dramatic effect on energy consumption. It can save up to 25 percent on your heating bills. A variety of materials are available, but one of the most environmentally friendly is cellulose in the form of compressed recycled newsprint which has been fireproofed.

We should use energy efficient light bulbs. These are usually expensive to buy but consume less than half the energy of standard bulbs. Also, these bulbs last much longer than conventional light bulbs reducing the consumption of resources.

Thermal solar panels are very efficient. They are capable of providing all the hot water you need even in Britain's climate. Photovoltaic panels can be fitted as solar roof tiles or solar windows and are now capable of generating about



half of an average home's electricity needs. A large conservatory with lots of glass panels on the south side of a building will tap light and warmth and reduce the need for lighting.

We can install a 'grey' water recycling system. At present water used to flush the toilets is of the same drinkable quality that comes out of the taps. This is an unnecessary waste of energy used in water purification. A grey water recycling system cleans water that has been used for washing and sends it through the toilet system reducing the use of clean drinking water.

New buildings can incorporate much more energy saving features in their design. They can have a timber structure, extensive insulation, electronic environmental controls, triple glazing, a non-polluting heating system and a turf roof. However, it is how we deal with our present homes that will determine housing's contribution to global warming. It's down to each and every one of us, so get insulating!

1. Read the article about conserving energy in the home. For questions 1-8, choose the correct answer A, B, C or D.

1. The amount of energy consumed by residential buildings is

- A. 45 million tons.
- B. 27% more than that consumed by industry.
- C. mainly responsible for global warming.



D. going to be reduced by 2010.

2. People making the laws had previously focused on

A. Europe.

B. residential buildings.

C. industry and transport.

D. private houses.

3. Blocking up draughts

A. is easy.

B. is expensive

C. requires planning.

D. is energy saving.

4. It is recommended that loft insulation is

A. 100 mm thick.

B. 200-300mm thick.

C. made of cellulose.

D. fireproof.

5. According to the writer, we should use light bulbs which are

A. conventional.

B. efficient.

C. standard

D. high energy

6. Which sort of panels can produce electricity?

- A. solar panels
- B. glass panels
- C. photovoltaic panels
- D. thermal solar panels

7. How can we reduce global warming?

- A. By buying a new environmentally friendly house.
- B. By designing new buildings with energy saving features.
- C. By installing new toilets in our homes.
- D. By recycling grey water into drinking water.

8. What's the best way to save energy in a building?

- A. Use environmental controls.
- B. Have a turf roof.
- C. Insulate as much as possible.
- D. Make sure it has a timber structure.

Good  
Luck!

