


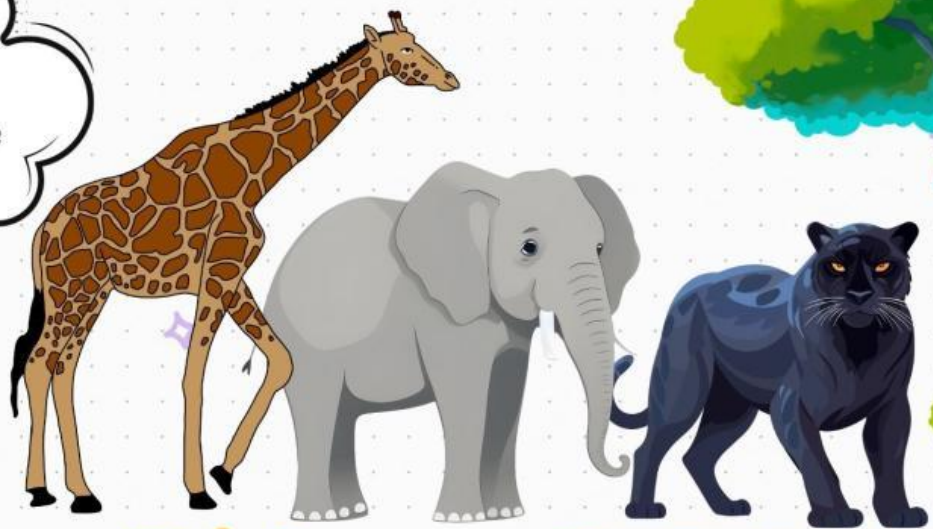
# DESCRIPTIVE TEXT

Hello  
I'm Kokoro!





Guys, look at  
those animals!!  
Can you tell me  
how it looks?



Match each animal with the most suitable adjective(s)



small, cute, fluffy



black, fierce, quiet,  
powerful, fast



fast, spotted, wild



big, strong, gentle

HELP ME  
DISCOVER THIS!



 **LIVEWORKSHEETS**

Read each short description and match it to the correct animal.

A

IT HAS LONG EARS  
AND IT IS FLUFFY

IT IS THE FASTEST  
LAND ANIMAL. IT  
HAS SPOTS

IT IS BIG AND  
STRONG. IT HAS A  
LONG TRUNK

IT IS BLACK, QUIET,  
AND POWERFUL. IT  
MOVES FAST

B



## Black Panther

The black panther is a beautiful and mysterious wild animal. It is not a separate species, but a melanistic form of leopards or jaguars. Its fur is completely black, but if we look closely, we can still see faint spots on its body. The black color helps the panther hide in the dark, especially at night.

Black panthers usually live in dense forests, swamps, and tropical jungles. They are excellent climbers and often rest on tree branches. They are also very good hunters. With their strong legs and sharp claws, black panthers can run fast and jump far. They usually hunt at night, using their sharp eyes and ears to find prey.

Even though they look fierce, black panthers are shy animals. They avoid humans and prefer to live alone. Their quiet movements and dark fur make them one of the most secretive animals in the wild.

Many people consider the black panther a symbol of power, grace, and mystery.



LET'S READ AND HEAR  
THIS TEXT GUYS!





READ THE TEXT "BLACK PANTHER" CAREFULLY. THEN CHOOSE THE BEST ANSWER (A, B, C, OR D) FOR EACH QUESTION.

1. What is a black panther?

**A**  
A SEPERATE SPECIES OF  
A BIG CAT

**B**  
A MELANISTIC FORM OF  
LEOPARDS OR JAGUARS

**C**  
A TYPE OF TIGER

**D**  
A WILD CAT WITH NO  
SPOTS

2. Why does the black panther's black color help it survive?

**A**  
IT HELPS ATTRACT  
PREY

**B**  
IT KEEPS ITS BODY  
WARM

**C**  
IT HELPS IT HIDE IN THE  
DARK

**D**  
IT SCARES OTHER  
ANIMALS

3. What can we see if we look closely at a black panther's fur?

**A**  
STRIPES

**B**  
NO PATTERNS AT ALL

**C**  
BRIGHT COLORS

**D**  
FAINT SPOTS

READ THE TEXT "BLACK PANTHER" CAREFULLY. THEN CHOOSE THE BEST ANSWER (A, B, C, OR D) FOR EACH QUESTION.

4. Where do black panthers usually live?

A

DESERTS

B

DENSE FORESTS AND  
TROPICAL JUNGLES

C

SNOWY MOUNTAINS

D

OPEN GRASSLANDS

5. Why are black panthers excellent climbers?

A

THEY HAVE VERY LIGHT  
BODIES

B

THEY HAVE SHARP  
CLAWS AND STRONG LEGS

C

THEY LIVE ONLY ON  
MOUNTAINS

D

THEY ARE TAUGHT BY  
OTHER ANIMALS

6. Which body parts help black panthers run fast and jump far?

A

LONG TAILS AND BIG EARS

B

STRONG LEGS AND SHARP  
CLAWS

C

SHORT LEGS AND THICK  
FUR

D

WEAK PAWS AND SMALL  
MUSCLES

READ THE TEXT "BLACK PANTHER" CAREFULLY. THEN CHOOSE THE BEST ANSWER (A, B, C, OR D) FOR EACH QUESTION.

7. When do black panthers usually hunt?

A

IN THE EARLY MORNING

B

AT NOON

C

AT NIGHT

D

IN THE AFTERNOON

8. What senses do black panthers use to find prey?

A

SMELL AND TASTE

B

TOUCH AND SMELL

C

SIGHT AND HEARING

D

TASTE AND SIGHT

9. Why are black panthers described as shy animals?

A

THEY PREFER TO LIVE  
ALONE AND AVOID HUMANS

B

THEY ARE AFRAID OF  
OTHER ANIMALS

C

THEY LIVE IN GROUPS

D

THEY CANNOT SEE  
HUMANS



READ THE DESCRIPTIVE TEXT ABOUT BLACK PANTHER. THEN COMPLETE THE TABLE BELOW BY IDENTIFYING THE STRUCTURE OF THE TEXT, INCLUDING THE IDENTIFICATION AND DESCRIPTION PARTS. WRITE THE SENTENCES OR MAIN IDEAS FROM THE TEXT THAT MATCH EACH PART.

Structure	Answer
Identification	
Description (Physical Appearance)	
Description (Habitat)	
Description (Abilities/Behaviors)	
Description (Additional Information)	

READ THE DESCRIPTIVE TEXT ABOUT BLACK PANTHER. THEN COMPLETE THE TASKS BELOW BY IDENTIFYING ADJECTIVES AND SIMPLE PRESENT TENSE SENTENCES FROM THE TEXT. FOLLOW THE EXAMPLES CAREFULLY.

1. Find 5 adjectives used in the text

**Example:** beautiful




2. Write 3 sentences from the text that use the Simple Present Tense.

**Example:** The black panther is a beautiful and mysterious wild animal.

Your answers:

1. \_\_\_\_\_

2. \_\_\_\_\_

3. \_\_\_\_\_