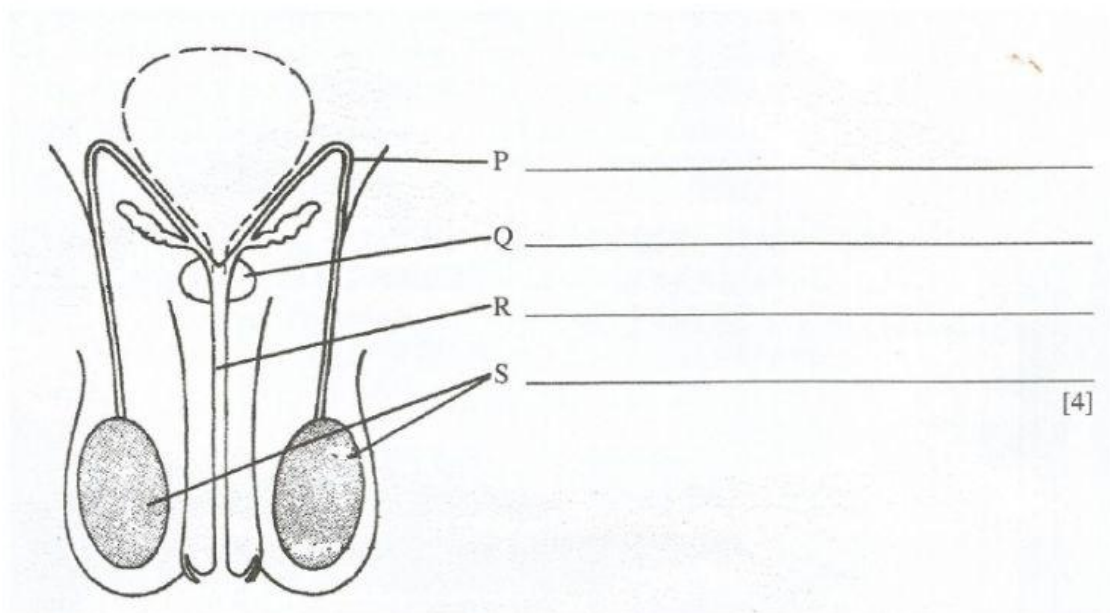


Name: \_\_\_\_\_

Date: \_\_\_\_\_

Grade: \_\_\_\_\_

1. The diagram below shows structures that make-up the male reproductive system.



- (a) What the names of the parts labeled P, Q, R and S. \_\_\_\_\_
- (b) Two different fluids pass, at different times, through the part labeled R.  
Name these two fluids  
(i) \_\_\_\_\_  
(ii) \_\_\_\_\_ [2]
- (c) (i) Name the reproductive cells made by the parts labeled S.  
\_\_\_\_\_  
(ii) Name the hormone made by the parts labeled S.  
\_\_\_\_\_ [2]
- (d) Explain why the parts labeled S are contained in the scrotum and not in the abdominal cavity.  
\_\_\_\_\_ [1]
- (e) Explain why some older men might have to have the part labeled Q surgically removed.  
\_\_\_\_\_

Total pts (10)