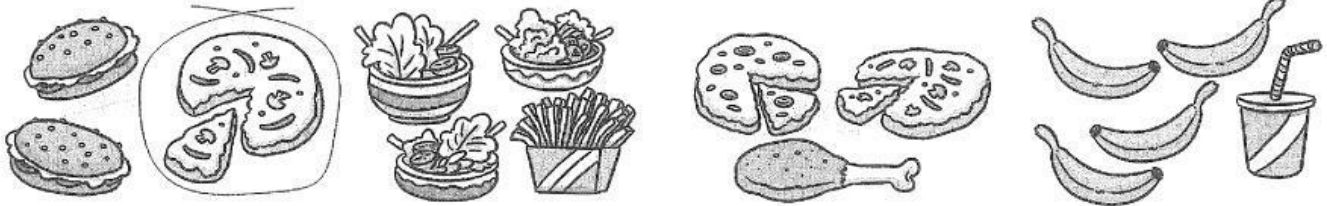


1 Circle the odd one out. Write.

/3



1 pizza 2 _____ 3 _____ 4 _____

2 Match.

/4

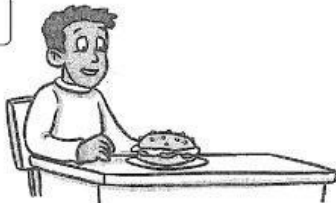
1 **30** ☐ c 2 **70** ☐ 3 **40** ☐ 4 **90** ☐ 5 **20** ☐

a ☐ forty b ☐ twenty c ☐ thirty d ☐ seventy e ☐ ninety

3 Underline the correct words.

/5

1



1 (Has / Have / Is)
you got a pizza?

No, I (hasn't / have /
haven't).

2



2 (Are / Has / Have)
she got fries?

Yes, she (has /
hasn't / have).

3



3 (Is / Has / Have)
you got salad?

Yes, I (has / have /
haven't).

4 Complete.

~~Have~~ hasn't got Yes

1 Have
you got a
sandwich?

2 _____, I have.

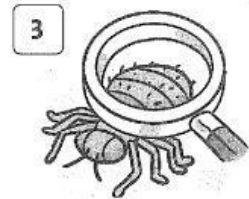
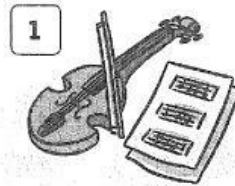
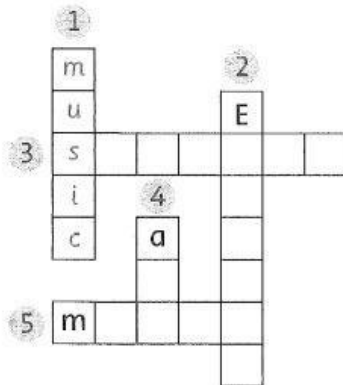
3 Has Erica _____
a mikshake?

4 No, she _____.

/3

/15

1 Complete the puzzle.



2 Complete and match.

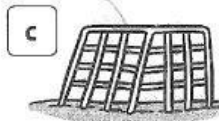
1 playground

c



3 c__p_ter room

2 a_tr_m



4 sp__ts f_e_d

3 Complete.

our their



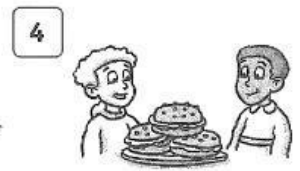
These are our books.



These are _____ pencil cases.



These are _____ toys.



These are _____ sandwiches.

4 Match.

1 What have we

b

a music.

2 Today we've got

b got on Tuesday?

3 When have we

c on Friday.

4 We've got English

d you got on Monday?

5 What have

e got maths?

6 I haven't

f got art today.