

Practical English Getting lost

- a  7.19 Watch or listen to Rob and Jenny planning their free morning. What's the problem?



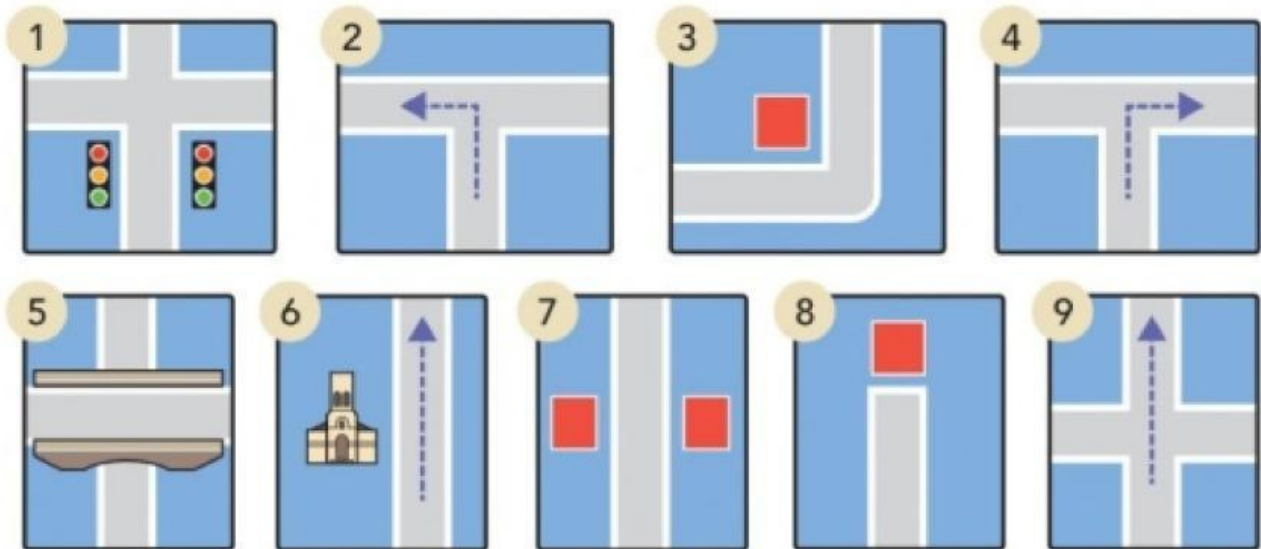
- b Watch or listen again. Complete the sentences with a word, a name, or a number.
- 1 Rob suggests that they go _____.
 - 2 He says that they can _____ bikes.
 - 3 _____ phones _____.
 - 4 Rob needs to interview an _____.
 - 5 Rob asks if he can do the interview on _____.
 - 6 Rob and Jenny arrange to meet at _____ o'clock outside the Tate Modern.

Glossary


(the) Tate Modern a famous art gallery in London


2 VOCABULARY directions

a Match the phrases and pictures.



 on the corner /'kɔːnə/


 at the traffic lights
/'træfɪk laɪts/


 a bridge /brɪdʒ/

 opposite /'ɒpəzɪt/


 turn left /tɜːn left/

 turn right /tɜːn raɪt/

 go straight on /streɪt/


 go past the church /pɑːst/

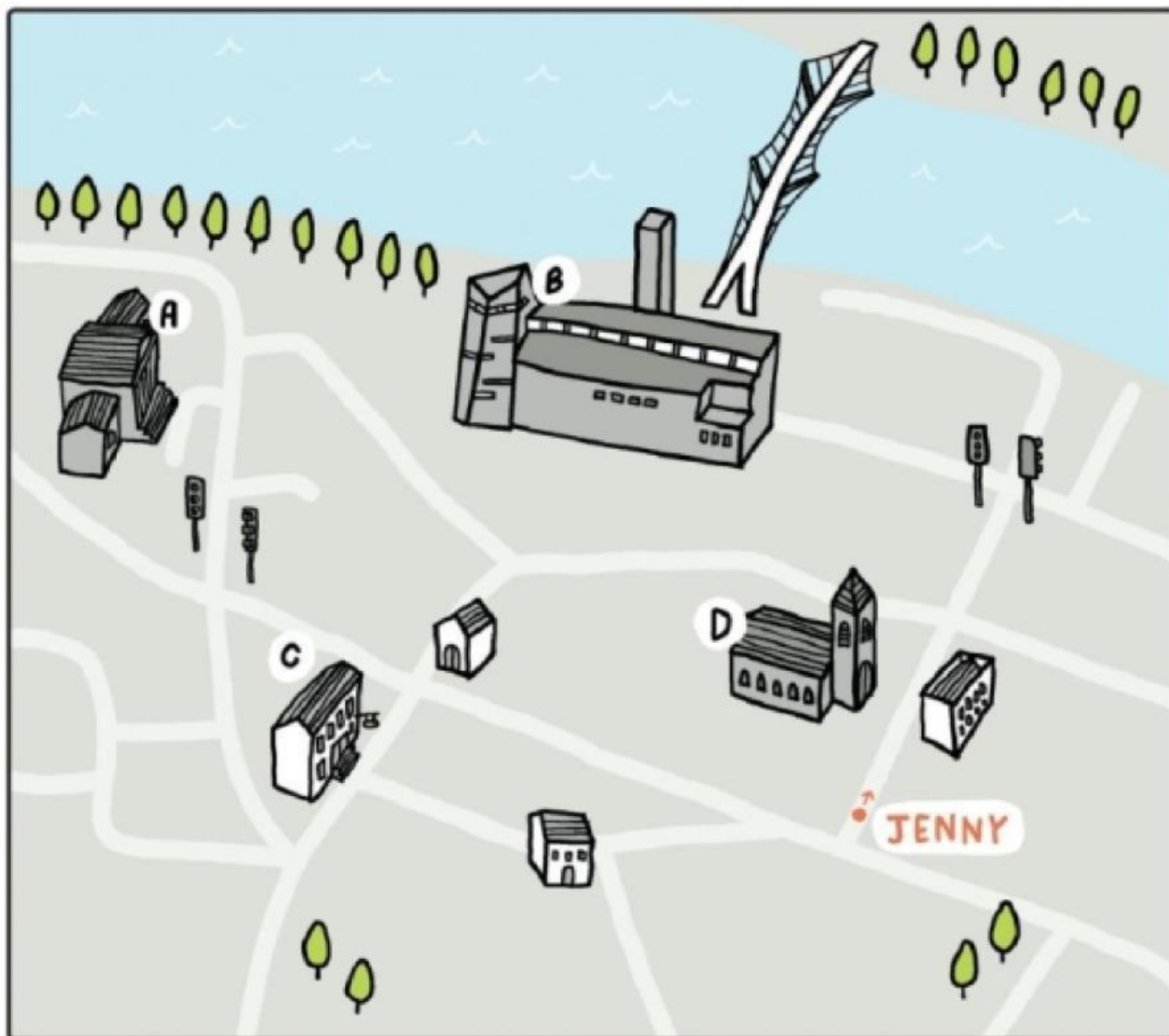
 at the end of the street

b  7.20 Watch or listen and check.

c Cover the phrases and look at the pictures. Say the phrases.


3 ASKING THE WAY

- a  7.21 Jenny is trying to find the Tate Modern. Watch or listen. Is it A, B, C, or D? How many people does she ask?



- b Watch or listen again. Complete the **You hear** phrases.

You say	You hear
Excuse me, please. Where's the Tate Modern?	¹ _____, I don't live here.
Excuse me. Is the Tate Modern near here?	The Tate Modern? It's near here, but I don't know exactly ² _____. Sorry.
Thank you.	
Excuse me. Can you tell me the way to the Tate Modern, please?	Yes, of course. Go straight on. Go ³ _____ the church, then turn ⁴ _____ at the traffic lights. And it's at the end of the street.
Sorry, could you say that again, please?	Yes, go straight on. ...You can't ⁵ _____ it!
Thank you.	

- c  7.22 Watch or listen and repeat the
You say phrases. Copy the rhythm.

d Practise the conversation with a partner.



Can you...? or Could you...?

Can you tell me the way to the Tate Modern?

Could you say that again, please?

We can use *Can you...?* or *Could you...?* when we want to ask another person to do something. *Could you...?* is more polite.

e  In pairs, role-play the conversation.

You are where Jenny is.

A Ask for directions to building A (the library). Begin *Excuse me, where's....*

B Give directions. Then change roles. **B** ask for directions to building C (the post office).