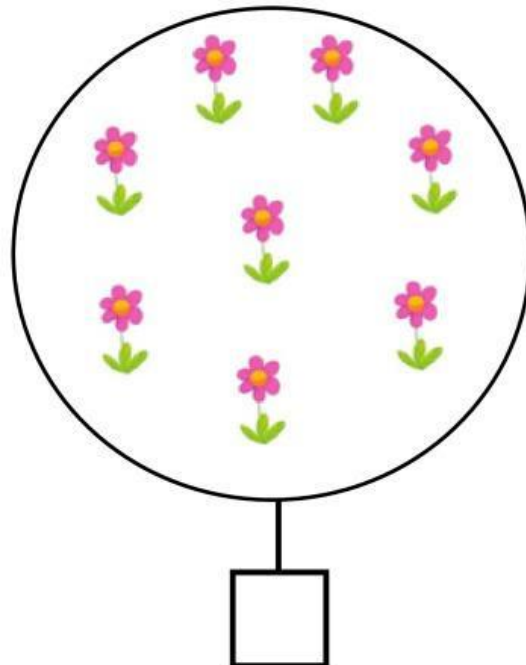
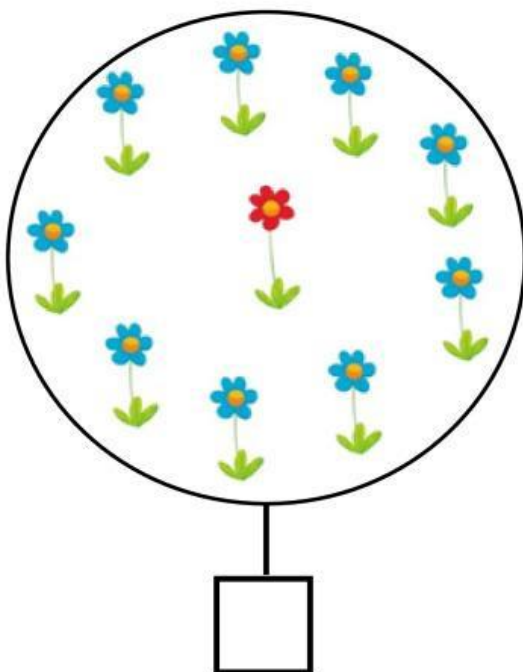
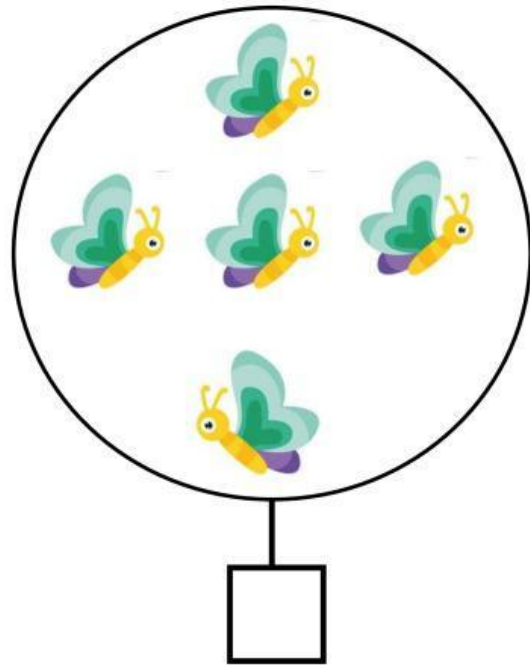
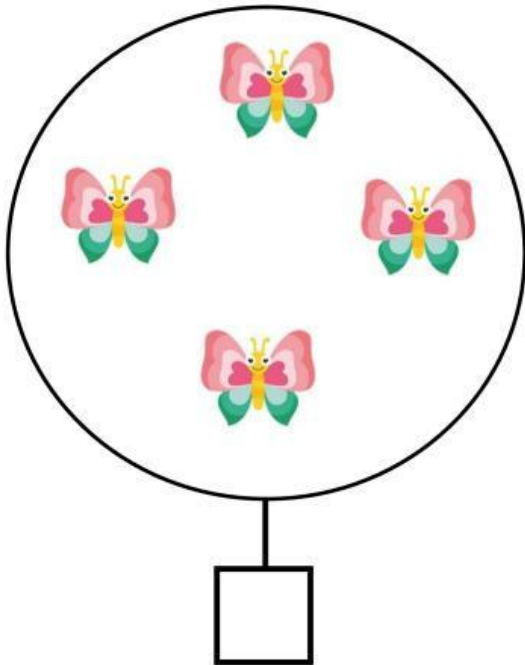


ALUNNO : \_\_\_\_\_

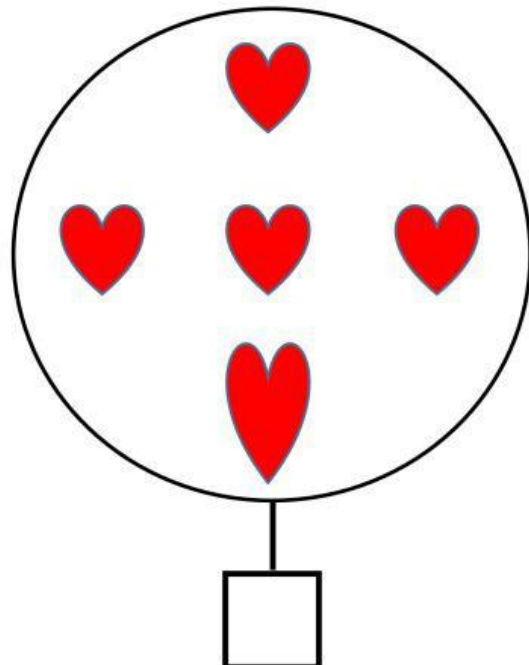
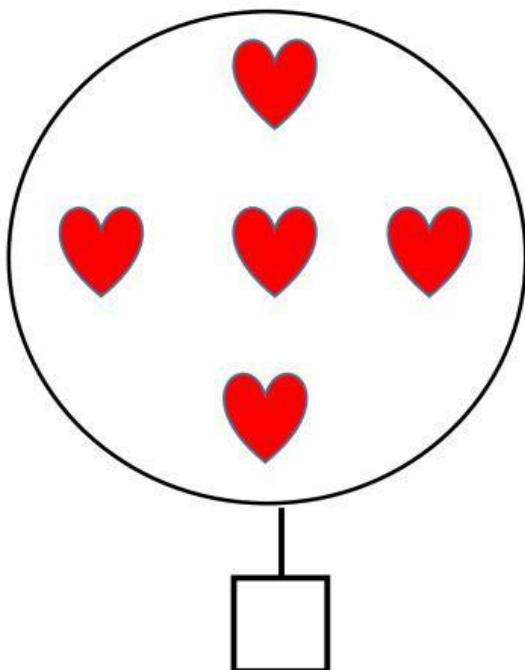
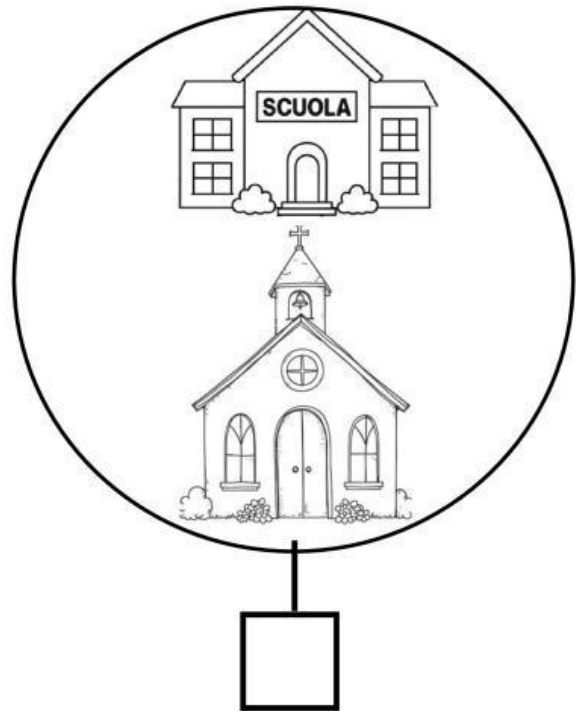
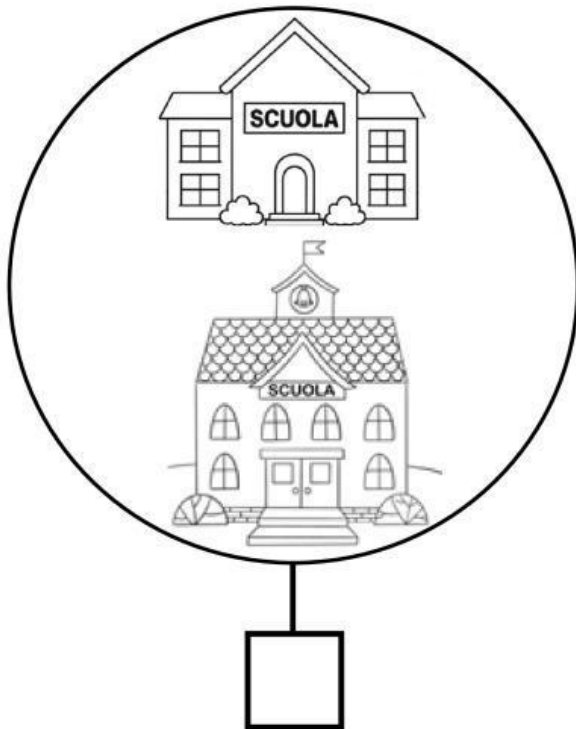
**INSIEMI: CLICCA SOLO SUL NON INSIEME**



**OB.: STABILIRE L'APPARTENENZA AD UN INSIEME ; CLASSIFICARE OGGETTI/ELEMENTI SECONDO UNA PROPRIETÀ**

ALUNNO : \_\_\_\_\_

**NSIEMI: CLICCA SOLO SUL NON INSIEME**



OB.: STABILIRE L'APPARTENENZA AD UN INSIEME; CLASSIFICARE OGGETTI/ELEMENTI SECONDO UNA PROPRIETÀ