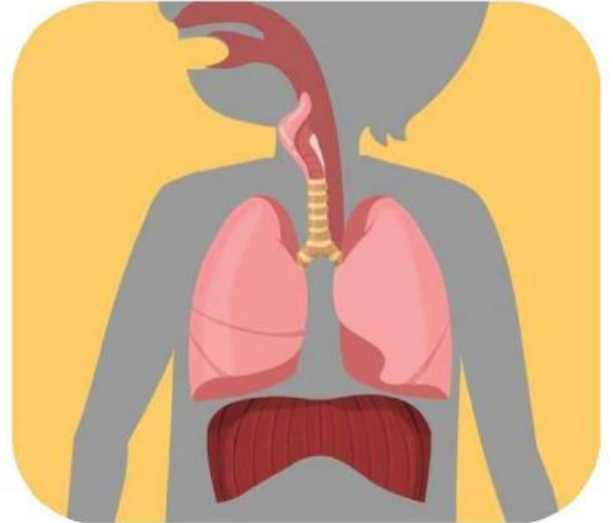




Respiratory System

The _____ is the group of organs we use for respiration and breathing.

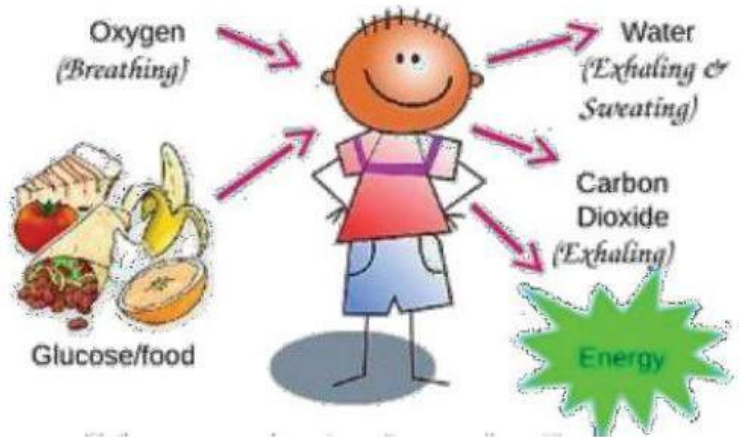
Organs or body parts involved include:





Cellular Respiration

is when cells use food (ex: glucose) to make energy.



Respiration Equations

word equation



balanced chemical equation



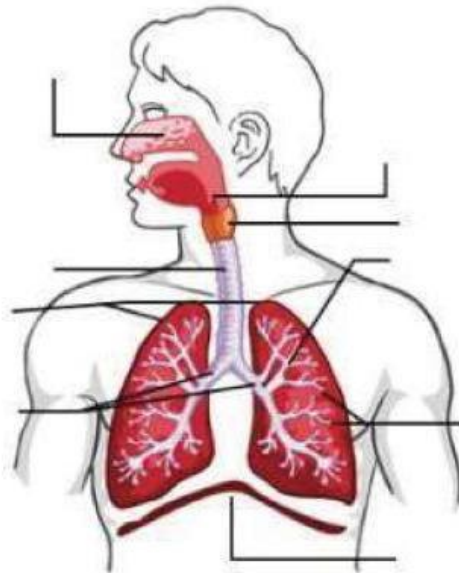
the cell organelle that releases energy from food molecules



17) What is cellular respiration?

Part 1: Respiratory Organs

18. Label the parts of the Respiratory System below.

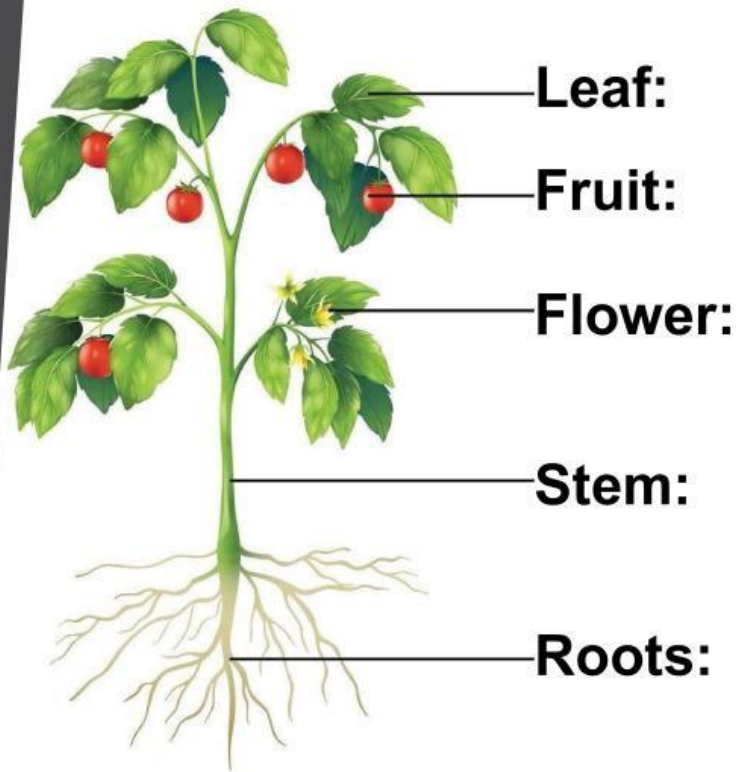


19) A) What is the chemical equation for aerobic respiration?



B) Underline the reactants and circle the products.

Function of Plants



Germination

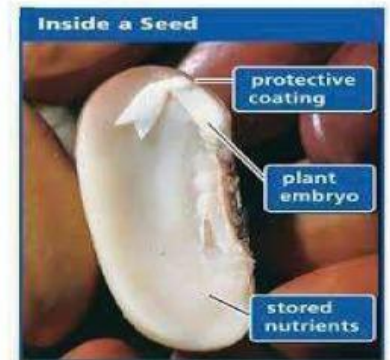
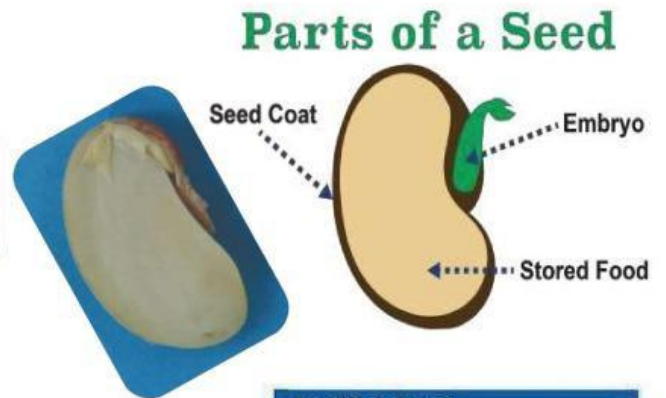
is when a seed starts to grow.

Parts of a seed:

1. Seed coat:

2. Embryo:

3. Stored food:



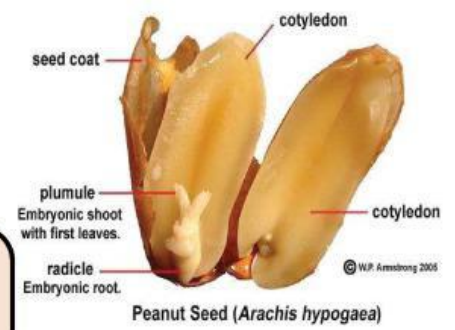
Germination

Steps to germination:

2. Embryo uses stored food for energy to begin to grow

3. Embryo sends out a root (it grows down because it senses gravity).

4. The shoot (stem and leaves) grow upward.



Plant Adaptations

are special characteristics that allow organisms to survive in particular habitats.

Plants adapt to:

- get sunlight, water, air and nutrients
- not be eaten
- stay rooted in the ground
- reproduce



20) What is Germination?

21) Germination requires what in order for it to begin?

22) What is an adaptation?

23) Where does photosynthesis happen in most plants?

24) What part of the plant is used to make the seeds?

25) What part of the plant is used to store the seeds?

26) What part of the plant is used to anchor the plant?