

WORKSHEET

FF3-Movers



Teacher's feedbacks

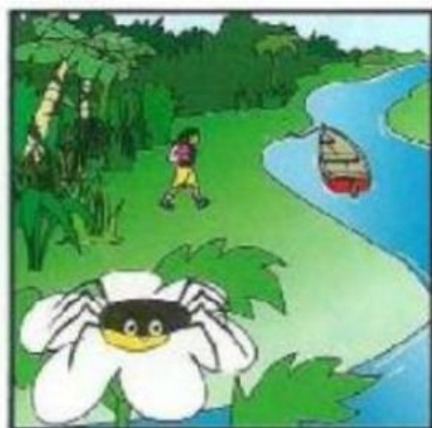
Task 1. Fill in the blank with the suitable given word.

People enjoy many outdoor activities in different seasons. In the (1)....., the weather is often warm and people like going on picnics. Children (2)..... kites in the park. In the (3)....., the weather is hot and sunny. There are many (4)..... at the beach. I usually wear (5)..... when I go swimming.

In the fall, the air is cool and (6)..... . Farmers (7)..... apples and vegetables. The (8)..... is very cold and snowy. People often wear (9)..... and scarves. Children can build a (10)..... in the yard.

- | | | | |
|---------------|---------------|-----------|------------|
| 1. A. day | B. spring | C. Winter | D. month |
| 2. A. read | B. eat | C. fly | D. is |
| 3. A. fall | B. autumn | C. summer | D. cold |
| 4. A. waves | B. flowers | C. rains | D. storms |
| 5. A. sandals | B. coats | C. gloves | D. hats |
| 6. A. snowy | B. hot | C. stormy | D. windy |
| 7. A. pick | B. go | C. swim | D. drink |
| 8. A. season | B. winter | C. spring | D. autumn |
| 9. A. shorts | B. flip-flops | C. coats | D. T-shirt |
| 10. A. tree | B. sandcastle | C. house | D. snowman |

Task 2: Listen and draw lines. There is one examples:



Monday

Tuesday

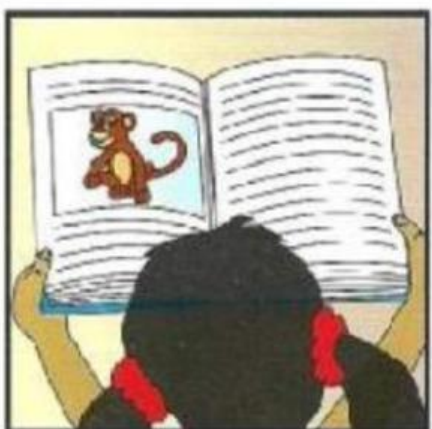


Wednesday

Thursday



Friday



Saturday

Sunday

