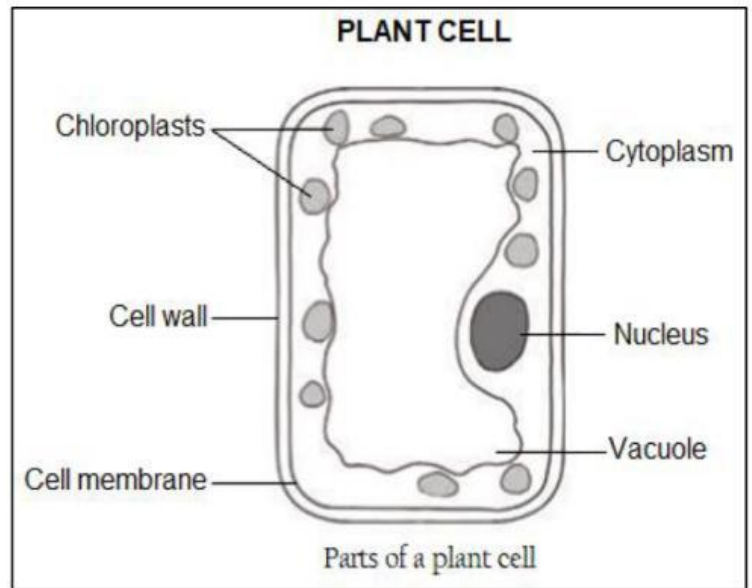
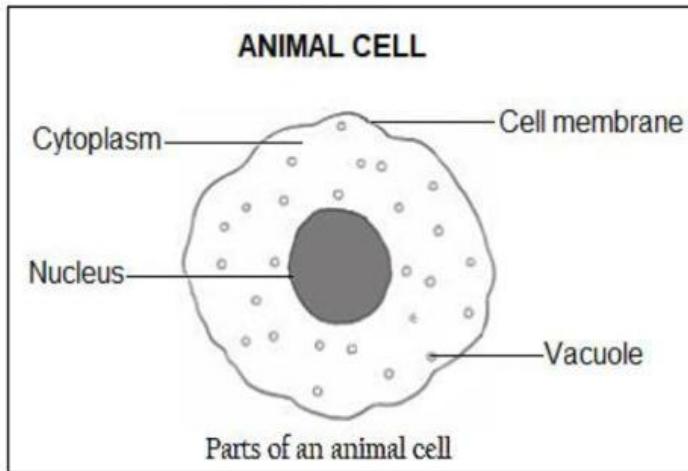


## PLANT AND ANIMAL CELLS

Living things are made up of cells. A cell is the basic unit of life. Cells are very small.

To see them, we need to use a microscope.



## DIFFERENCES BETWEEN PLANT AND ANIMAL CELL

	ANIMAL CELL	PLANT CELL
SHAPE	Irregular shaped	Regular shape or fixed shape
CELL WALL	No cell wall	Has cell wall
CHLOROPLASTS	No chloroplasts	Has chloroplasts
VACUOLES	Small and many vacuoles	One large vacuole