

TEST 1 LISTENING

Part 1



Questions 1–5

For each question, choose the correct answer.

1 How will David travel?



A



B



C

2 What time will Roger see the dentist?



A



B



C

3 How much will Vera pay for her lunch?



A



B

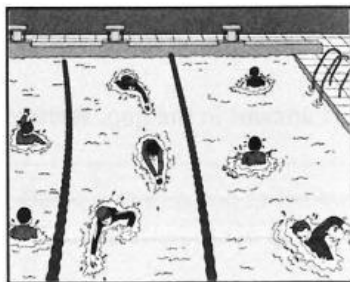


C

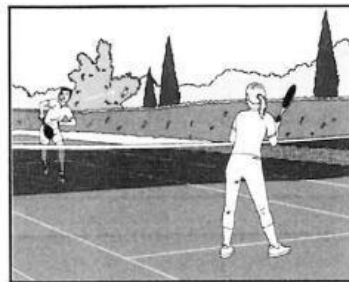
4 What will the friends do in the afternoon?



A

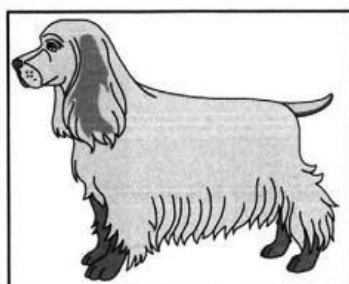


B

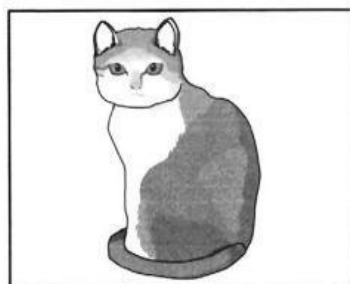


C

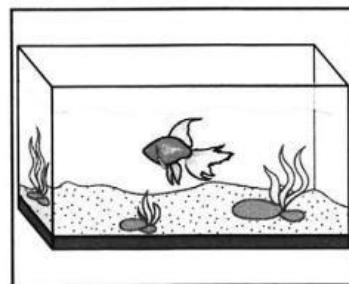
5 What pet will Janet have?



A



B



C

Part 2



Questions 6–10

For each question, write the correct answer in the gap. **Write one word or a number or a date or a time.**

You will hear a woman talking to a group of students about the library.

Library Information for Students

Hours during term time:	24 hours a day
Hours outside term time:	(6) – 7.00 p.m.
Number of books you can take out:	(7)
Cost of returning CDs and magazines late:	(8) £..... per day
Cost of first library card:	(9)
To get a card, give in a form and:	(10)

Part 3



Questions 11–15

For each question, choose the correct answer.

You will hear Jane talking to her friend, David, about going to the cinema.

11 What does Jane want to see at the cinema?

- A** She doesn't have a clear idea.
- B** She wants to see the new James Bond film.
- C** She wants to see a love story.

12 Robert

- A** can't come to the cinema.
- B** likes action films.
- C** prefers not to see the James Bond film.

13 The sad film

- A** is about two people who die.
- B** doesn't sound good to David.
- C** is the only choice.

14 David thinks

- A** the comedy would be good for children.
- B** the comedy is a good choice for everyone.
- C** not everyone likes comedies.

15 Jane

- A** will meet David at the cinema at about eight.
- B** says the film starts at about eight.
- C** will go to David's house at about eight.

Part 4



Questions 16–20

For each question, choose the correct answer.

- 16** You will hear a woman talking to her friend about a meal at a restaurant.
What did she eat?
- A** steak
 - B** fish
 - C** pasta
- 17** You will hear a man explaining why he was late for work.
Why was he late?
- A** He woke up late.
 - B** The train was late.
 - C** The bus was slow.
- 18** You will hear two friends talking about holidays.
Where did Anita go?
- A** New York
 - B** Florida
 - C** Los Angeles
- 19** You will hear two friends talking about shopping.
What do they need from the supermarket?
- A** potatoes
 - B** carrots
 - C** onions
- 20** You will hear a man talking on the phone.
Why can't he come to the party?
- A** He has to go to work early.
 - B** His mother is visiting him.
 - C** His mother had an accident.

Part 5



Questions 21–25

For each question, choose the correct answer.

You will hear Greta talking to Anthony about holidays.
What type of holiday will each person go on?

Example: Anthony B

People

21 Julie ☐

22 Greta ☐

23 John ☐

24 Jenny ☐

25 Ed ☐

Type of holiday

A sightseeing

B walking

C cycling

D camping

E no holiday

F sailing

G skiing

H beach

You now have six minutes to write your answers on the answer sheet.