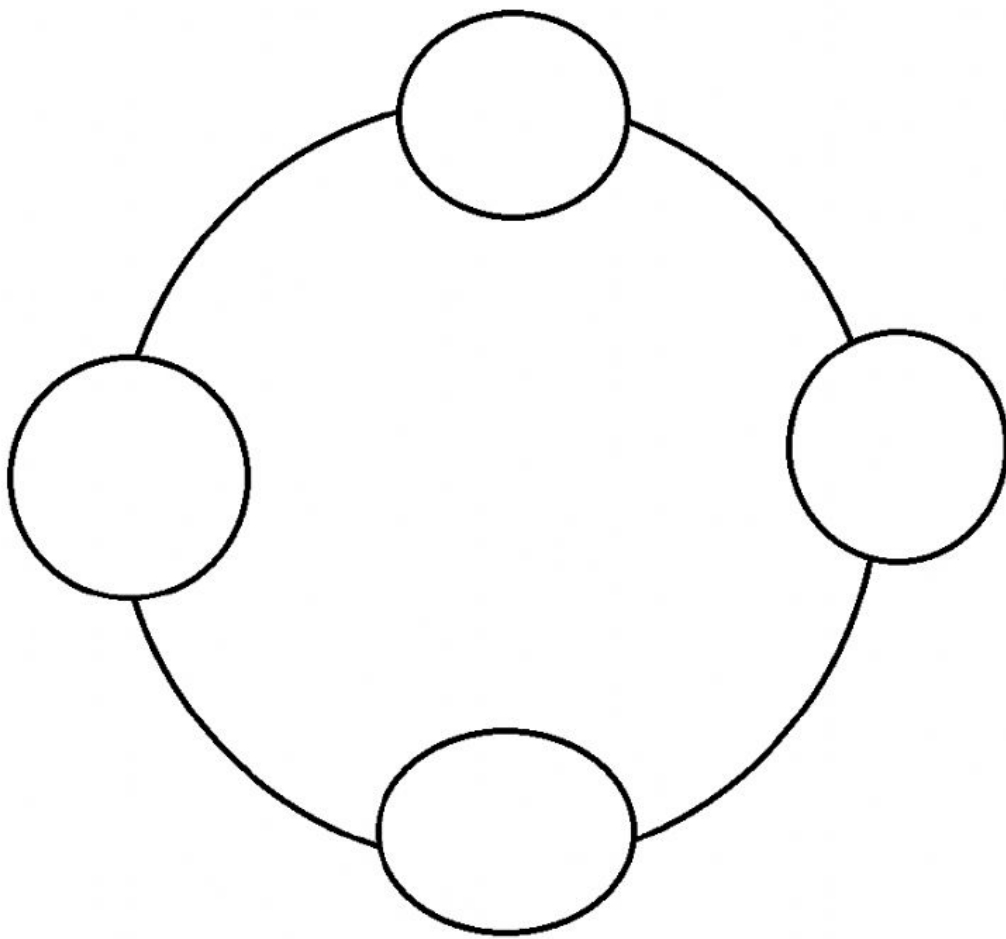
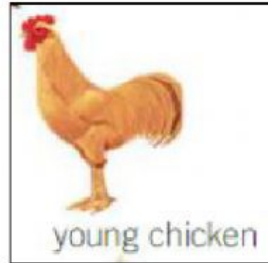
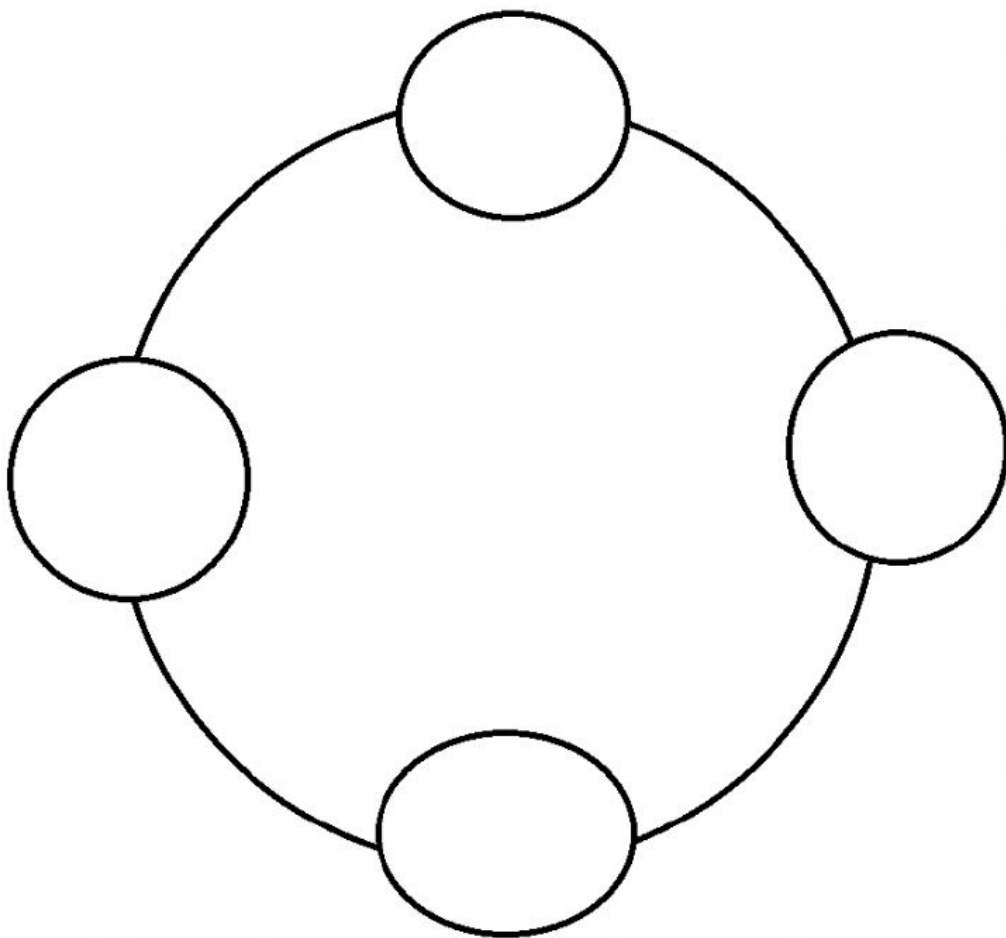
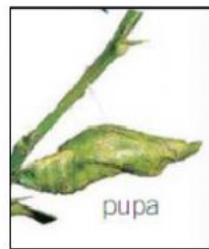
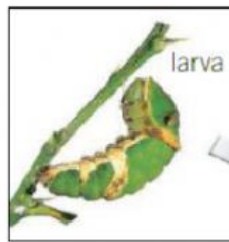
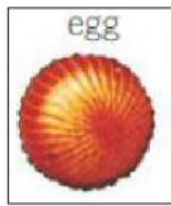


Science Practice

Drag the following pictures and complete the life cycle.



Drag the following pictures and complete the life cycle.



Match each animal with its natural habitat.



condor



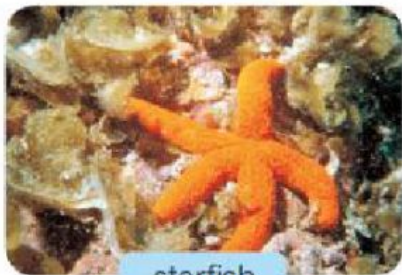
ocean



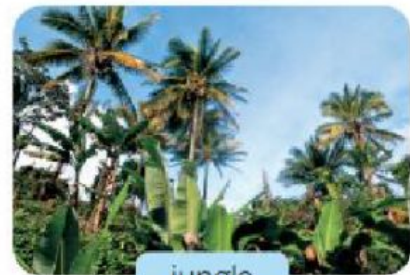
toucan



mountains



starfish



jungle

Mark the nocturnal animals with a ✓.



owl



dog



bat

Read the paragraph and answer the questions:

In the Antarctic, the temperature is very low, and everything is covered in ice and snow. In the Atacama desert in Chile, it is very hot during the day, and there is no vegetation to provide shelter from the sun's rays.

a. Which of these animals can survive in the desert?



b. Which option shows good clothing for visiting Antarctica?



Match the characteristics of the habitats with the images.

a little light

a lot of light

a lot of humidity

a little humidity

high temperature

low temperature



Drag two characteristics of each habitat.





hot	Cold
humid	dry