

Nature & Environment

Exercise 1

Fill in each blank with **NO MORE THAN TWO** words.

Earth

Earth, the planet where we all live, is the third planet from the (1) _____. It is also the (2) _____ largest planet in our solar (3) _____. The moon is the Earth's only satellite. There are (4) _____ continents and (5) _____ oceans on the earth. The seven continents are (6) _____, (7) _____ America, South America, Europe, Australasia, (8) _____ and Antarctica. The (9) _____ large oceans are the (10) _____ Ocean, the Atlantic Ocean, the (11) _____ Ocean and the Arctic Ocean. The earth is divided into several layers, with the (12) _____ is the inner core of the earth, there are also the outer cores, the mantle and the crust. The earth is (13) _____ to over ten million different kinds of (14) _____, bacteria and (15) _____.

Exercise 2

Listen to the paragraphs and fill in each blank with ONE word only.

[1] Earthquakes happen without (1) _____. They can happen any time of a day, at any point during the year. But don't worry because most of them are so (2) _____ that they cannot be felt. Only a few big ones hurt people. However, it's important to know what to do when an earthquake is happening.

[2] Do NOT go outside. You could get (3) _____ from falling glass or parts of buildings. If you are outside, stay away from buildings and (4) _____.

[3] Stay under a desk, table, or other strong furniture. Hold on to it or stay in a corner of the building. Cover your face and (5) _____ with your arms and cover your mouth with a (6) _____ or clothing. Stay inside until shaking stops and it is safe to go outside.

[4] Keep away from windows, pictures or advertisements on the wall or the building, and anything else that could fall and hurt you. Most people get hurt by (7) _____ things, not by the shaking itself.

[5] Also keep away from a fire. You could fall down and (8) _____ yourself on the fire.

[6] If you are driving when an earthquake happens, stop the car if it's (9) _____. Stay inside your car until the earthquake stops, and don't drive near (10) _____. Try not to stop by power lines or trees. These could fall and hurt you.

Exercise 3

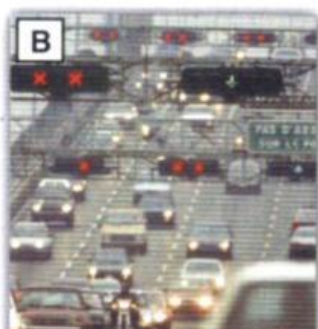
Match the speakers to what each one would do if he/she was leader of his/her country.

Write R for Roberta, M for Maria or J for James.

1	stop logging companies from destroying the rainforest	
2	not allow hunters to kill endangered species	
3	ban cars	
4	creates special parks	
5	improve public transport	
6	make logging companies plant new trees	

Exercise 4

You will hear four people talking about environmental problems and solutions. Match the speakers (1-4) to the pictures (A-D). There is one extra picture that you do not need.



Exercise 5

Listen and correct the words in bold.

1. We all need water - not just for our **gardens** and factories, but to survive.
2. The **problem** begins at home.
3. Governments can help by passing laws to stop **animals** from wasting and polluting water.
4. Many cities have successfully **wasted** water by repairing pipes.

Exercise 6

Look at the pictures. Listen, then tick (✓) the picture which is not mentioned.



Exercise 7

You are going to listen to a news report. Read the sentences below then listen and put them in the correct chronological order.

- (a) The tremendous heat inside was released. _____
- (b) Mud from the volcano is filling rivers, causing flooding. _____
- (c) The top of the mountain was blown off. _____
- (d) Huge blocks of ice and rock fell onto the surrounding area. _____
- (e) The mountain was hit by two earthquakes. _____
- (f) The hot ash started fires. _____
- (g) Hot ash and gas came out of the mountain causing a lightning storm. _____

Exercise 8

Read the sentences, then listen and underline the correct word.

1. Rare plant and **human** / **animal** species are disappearing.
2. The trees are being **cut** / **chopped** down for paper or to make room for cattle farms.
3. Birds and animals **lose** / **miss** their homes.
4. Factories are polluting our rivers and lakes with dangerous **oils** / **chemicals**.
5. Sea life is threatened with **extinction** / **loss**.
6. Cars and factories are giving off dangerous **waste** / **fumes**.
7. We can plant trees and **adopt** / **adapt** animals.

Exercise 9

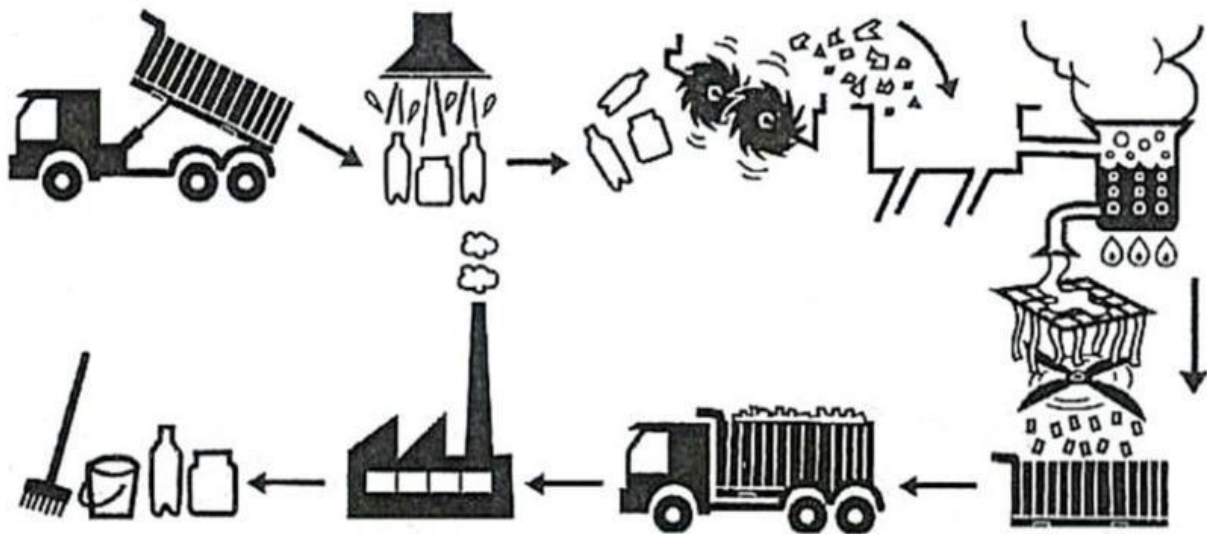
Read the table, then listen and fill in the missing information.

PROBLEM	CAUSES	EFFECTS
litter	lack of education	streets are (1) _____, people catch diseases
air pollution	factories and (2) _____ pollute the air	cause serious (3) _____ problems, trees and (4) _____ are damaged
water pollution	factories dump waste into (5) _____, sea is polluted with (6) _____ from tankers	people suffer from (7) _____ problems, fish are killed, rivers are contaminated
destruction of forests	people cut down or (8) _____ forests	animals and plants lose their (9) _____, animals may even become extinct, people have less (10) _____ to breath

Exercise 10

Listen to a description of how plastic bottles are recycled. Complete the sentences with the words below.

melted used chopped dried cut up
washed separated sold taken
collected put cooled heated



1. Plastic bottles are ...collected... from homes.
2. They are _____ to a recycling centre.
3. The bottles are _____.
4. The clean bottles are _____ into small pieces.
5. The pieces are _____ into a large tank of water, where they are _____ into different kinds of plastic.
6. The pieces of plastic are _____ and _____ into a liquid.
7. The liquid is _____ into long strings.
8. The string are _____ and then they are _____ into small pellets.
9. The pellets are _____ to factories.
10. They are _____ to make new products.