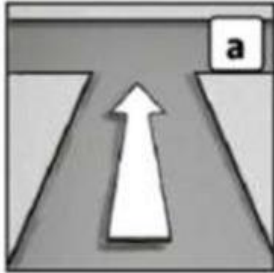


Practice English Exercises – Directions

Complete the key phrases with the words below. Then match them with the pictures.

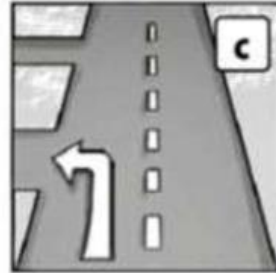
along at end over under straight first past



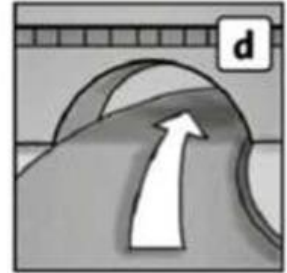
Go to the ____
of the road.



Go ____ the bank.



Take the ____ left.



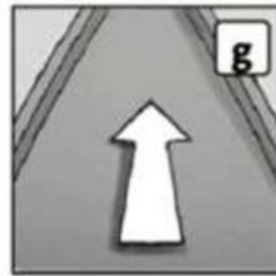
Go ____ the bridge.



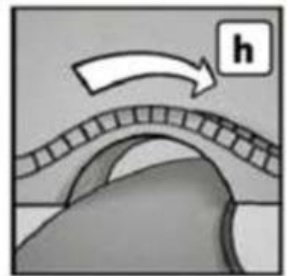
Go ____ King's Rd.



Turn right ____
the intersection.

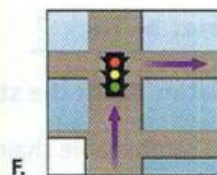
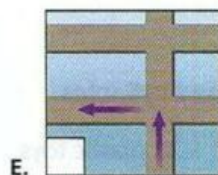
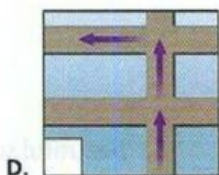
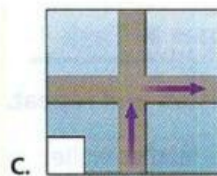
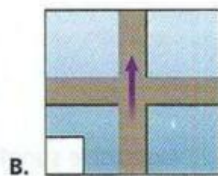
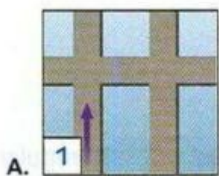


Go ____.



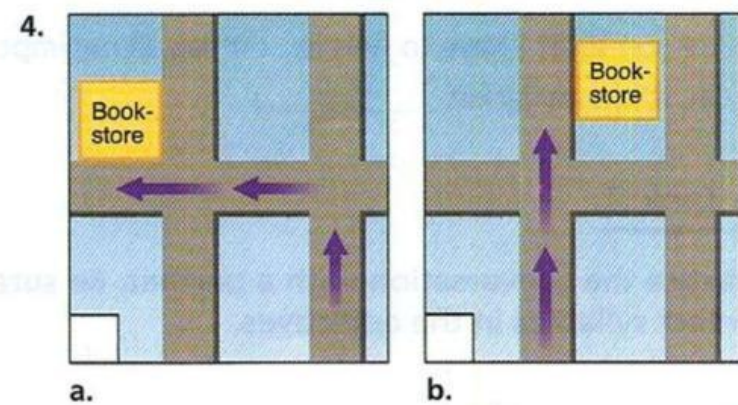
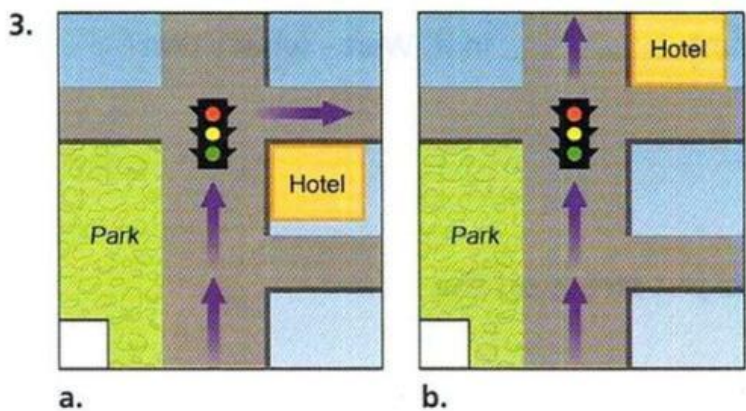
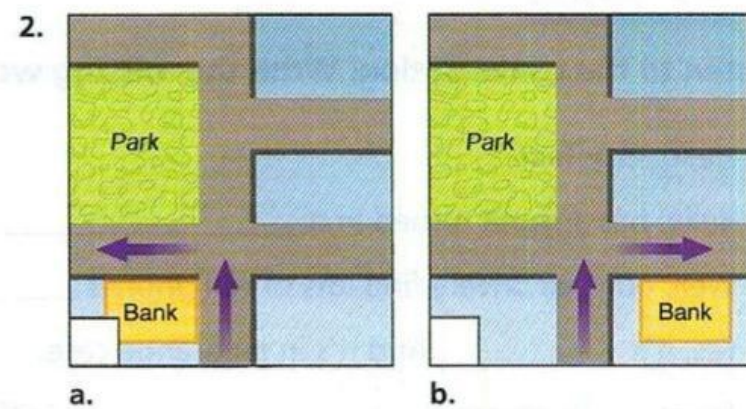
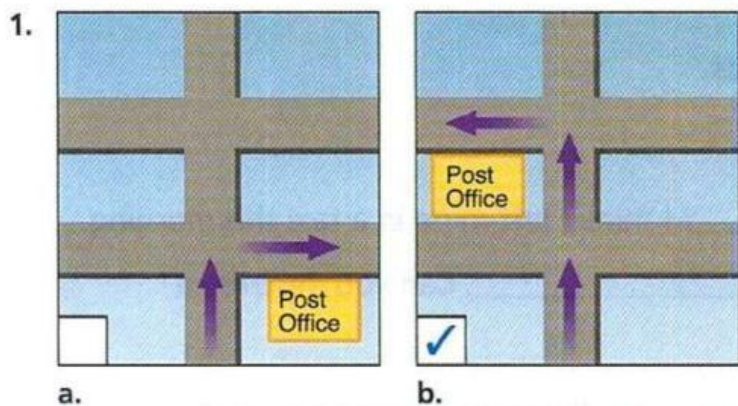
Go ____ the bridge.

Match each direction with a map.



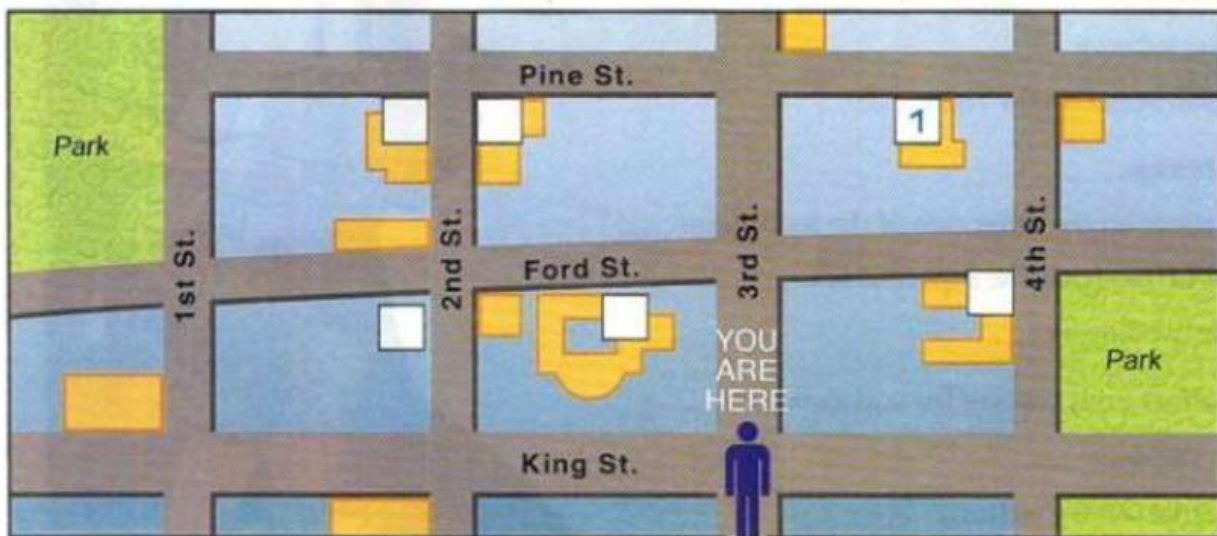
- 1) Go straight up the block.
- 2) Turn right at the light.
- 3) Take the first street on the left.
- 4) Go straight for two blocks. Then turn left.
- 5) Go through the intersection.
- 6) Take a right at the corner.

People are giving directions. Listen and check the correct map.



Look at the map and listen to the directions. Write the number of each place on the map.

1) a bank	4) the post office
2) the Peking Restaurant	5) the tourist office
3) a supermarket	6) the art museum



Listen again. Complete the statements for each set of directions.

- 1) Go _____ up Third Street for two _____ and _____ right on Pine Street.
- 2) It's _____ your left, on the _____ of Ford and Second.
- 3) Go left down King and _____ go _____ Second Street for two blocks.
- 4) It's not far _____ here.
- 5) Go up Third Street and turn _____ on Ford. It's in the first big building you see on your _____
- 6) Go to the _____ of the block.

Look at the map and complete the sentences with the words below.



between corner left next to opposite

- 1) The police station is _____ the bus station.
- 2) The library is _____ the café and the hotel.
- 3) The restaurant is _____ the fire station.
- 4) The gym is on the _____ next to the bank.
- 5) Go down William Street. The department store is on your _____ near the traffic lights.

Listen and look at the map. Write the places/destinations.

1) *supermarket*

2) ____.

3) ____.

4) ____.

5) ____.

6) ____.

Listen to the directions. Start from "You are here" on the map. Where do the people want to go? Mark the routes.

1) _____

2) _____

3) _____

4) _____

Give directions from "You are here" to the following places.

1) The police station: _____

2) The restaurant: _____

3) The library: _____