

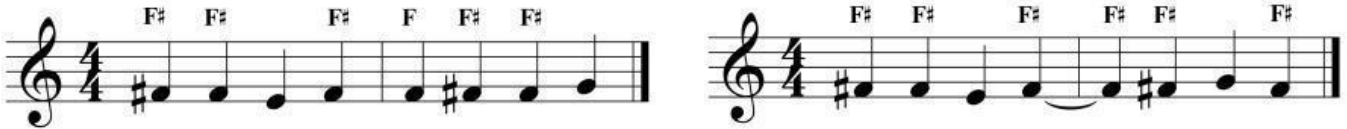
Sharps, Flats and Naturals

A **natural** sign (♮) placed before a note cancels a sharp or flat.

Sharps, flats and naturals are all called **accidentals**.

Accidentals affect every note on the same line or space for the remainder of the measure.

Bar lines cancel all accidentals from the previous measure unless a note is tied across the bar line.



A natural is used to cancel sharps and flats.



Write the name of each note.

1

2

3

4

5

Finale® Worksheets, Copyright © 2009 by MakeMusic, Inc.

MakeMusic grants permission to duplicate this worksheet for non-profit, educational use only, provided each copy includes this copyright notice.

Copies may not be sold or included in any materials offered for sale to the general public.