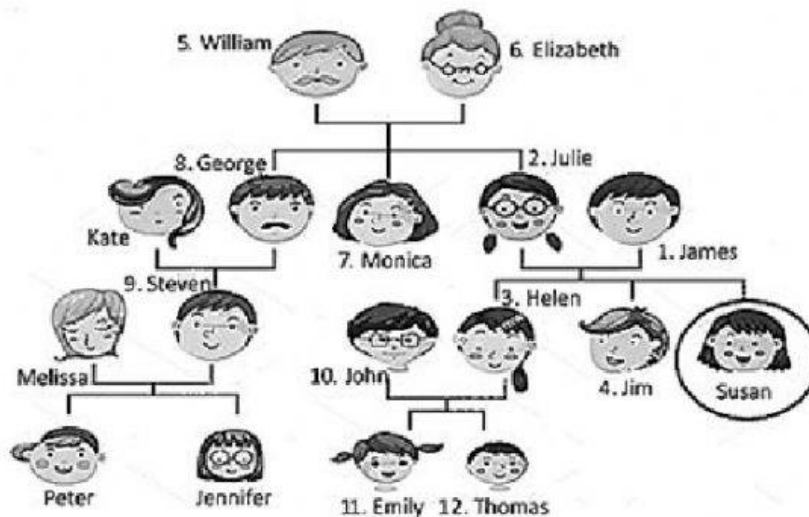


SUSAN'S FAMILY TREE



Look at Susan's family tree.

A. What's the relationship between Susan and the people from 1 to 12? Label the pictures with the family relationships.

- | | | |
|----|----|-----|
| 1. | 5. | 9. |
| 2. | 6. | 10. |
| 3. | 7. | 11. |
| 4. | 8. | 12. |

B. Look at the family tree again.

Choose 5 DIFFERENT family relationships and describe them in 5 different sentences using the possessive 's case as in the examples. Remember to use contractions when possible.

Example: *William and Elizabeth are Monica's parents.*

William's Elizabeth's husband.

1. _____

2. _____

3. _____

4. _____

5. _____