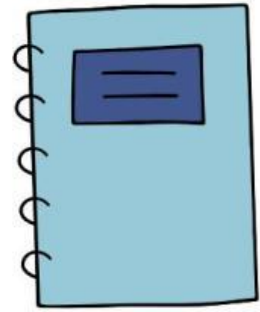


PREPOSITIONS OF TIME



1 Complete the sentences with IN, ON, or AT.

- My birthday is ____ July.
- We have class ____ Monday morning.
- She usually wakes up ____ 6:30 a.m.
- They go skiing ____ winter.
- He was born ____ 2002.
- Let's meet ____ Friday afternoon.
- The concert starts ____ 8:00 p.m.
- The flowers bloom ____ spring.
- I visited London ____ Christmas.
- The meeting is ____ the morning.

2 Choose the correct option.

- We play football (in / on / at) Sundays.
- The shop closes (in / on / at) midnight.
- She will graduate (in / on / at) 2026.
- They usually travel (in / on / at) summer.
- The movie starts (in / on / at) 9:15.

3 What has been your favorite part of this unit?

- My sister was born on 1998.

• I usually take a nap in the afternoon of Monday.

• We eat dinner in 7:00 p.m.

• The exam is at July.

• They met at Christmas Day.
