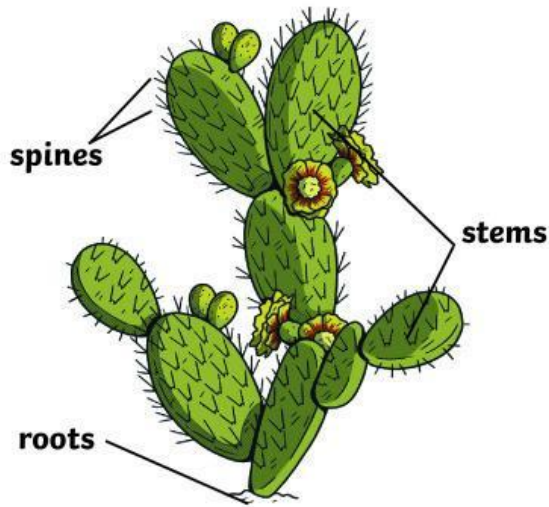


Cactus Adaptation

Read the information about how cactuses have adapted to suit their harsh environment and fill in the missing words using vocabulary from the box.



shapes animals cool
fog deserts rainfall
photosynthesis water
reflect store absorb dew

Cactuses are spiky plants, often found in extremely dry environments such as _____. They do not need much water to survive.

A cactus uses its thick stems to _____ water. The cactus expands or contracts, depending on how much water it holds. The stems create energy for the plant through _____.

Over time, they have evolved to grow in _____ with smaller surface areas, which helps to reduce water loss.

A cactus' spines can _____ and _____ sunlight, which helps the cactus to keep _____. The spines also stop _____ from feeding on the plant. As well as helping to reduce water lost through evaporation, the spines collect water from other sources such as _____ and _____ and direct it straight to the plant's roots.

A cactus has long, fibrous roots which spread over a wide area and are shallow, so they can collect surface _____ immediately after any _____. Some cactuses send out taproots, which grow deep into the ground to reach water and help provide stability.