

# The four seasons

1.Spring

2.Summer

3.Autumn

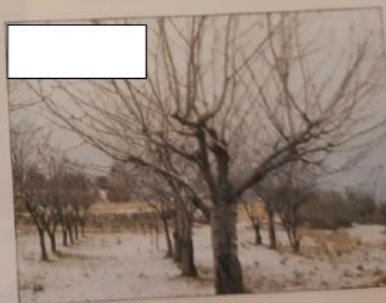
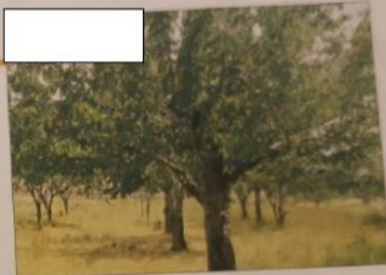
4.Winter

a) It is the coldest time of the year. Some animals hibernate during this season.

b) The weather usually turns warmer, trees begin to grow their leaves, plants start to flower.

c) The leaves change from green to red, orange, yellow or brown before falling.

d) It is the warmest season of the year.



SPRING

SUMMER

AUTUMN

WINTER