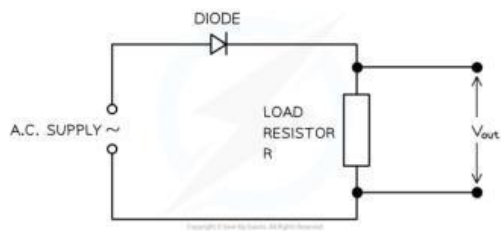


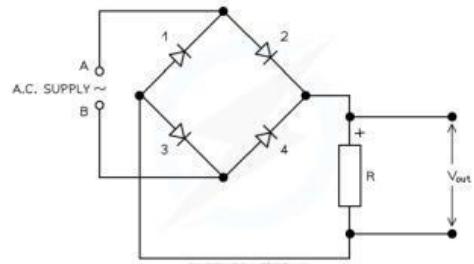
ALTERNATING CURRENTS RECTIFICATION PROCESS FLOW

Complete the table by rearranging the process flow in the correct order.

Circuits:



Half-wave rectification circuit



Full-wave rectification, bridge rectifier circuit

Process flow:

Step	Half-wave rectification	Full-wave rectification
1		
2		
3		
4		
5		

Half-wave rectification

Current flows to the load
Output result: Pulsating D.C. with gaps
A.C. Voltage applied
Negative half-cycle: diode blocks current
Positive half-cycle: diode conducts current

Full-wave rectification

Negative half-cycle: the other two diodes conduct
Positive half-cycle: 2 diodes conduct
Current flows in one direction through the load
Current still flows in the same direction through the load
A.C. Voltage applied