

# Mock Test - Academic Reading

## Section 1

You should spend about **20 minutes** on **Questions 1–13**, which are based on Reading Passage 1 below.

### Reading passage 1 - Electoreception

<b>A</b>	Open your eyes in sea water and it is difficult to see much more than a murky, bleary green colour. Sounds, too, are garbled and difficult to comprehend. Without specialised equipment humans would be lost in these deep sea habitats, so how do fish make it seem so easy? Much of this is due to a biological phenomenon known as electoreception – the ability to perceive and act upon electrical stimuli as part of the overall senses. This ability is only found in aquatic or amphibious species because water is an efficient conductor of electricity.
<b>B</b>	Electoreception comes in two variants. While all animals (including humans) generate electric signals, because they are emitted by the nervous system, some animals have the ability – known as passive electoreception – to receive and decode electric signals generated by other animals in order to sense their location.
<b>C</b>	Other creatures can go further still, however. Animals with active electoreception possess bodily organs that generate special electric signals on cue. These can be used for mating signals and territorial displays as well as locating objects in the water. Active electoreceptors can differentiate between the various resistances that their electrical currents encounter. This can help them identify whether another creature is prey, predator or something that is best left alone. Active electoreception has a range of about one body length – usually just enough to give its host time to get out of the way or go in for the kill.
<b>D</b>	One fascinating use of active electoreception – known as the Jamming Avoidance Response mechanism – has been observed between members of some species known as the weakly electric fish. When two such electric fish meet in the ocean using the same frequency, each fish will then shift the frequency of its discharge so that they are transmitting on different frequencies. Doing so prevents their electoreception faculties from becoming jammed. Long before citizens' band radio users first had to yell "Get off my frequency!" at hapless novices cluttering the air waves, at least one species had found a way to peacefully and quickly resolve this type of dispute.
<b>E</b>	Electoreception can also play an important role in animal defences. Rays are one such example. Young ray embryos develop inside egg cases that are attached to the sea bed. The embryos keep their tails in constant motion so as to pump water and allow them to breathe through the egg's casing. If the embryo's electoreceptors detect the presence of a predatory fish in the vicinity, however, the embryo stops moving (and in so doing ceases transmitting electric currents) until the fish has moved on. Because marine life of various types is often travelling past, the embryo

	has evolved only to react to signals that are characteristic of the respiratory movements of potential predators such as sharks.
<b>F</b>	Many people fear swimming in the ocean because of sharks. In some respects, this concern is well grounded – humans are poorly equipped when it comes to electroreceptive defence mechanisms. Sharks, meanwhile, hunt with extraordinary precision. They initially lock onto their prey through a keen sense of smell (two thirds of a shark’s brain is devoted entirely to its olfactory organs). As the shark reaches proximity to its prey, it tunes into electric signals that ensure a precise strike on its target; this sense is so strong that the shark even attacks blind by letting its eyes recede for protection.
<b>G</b>	Normally, when humans are attacked it is purely by accident. Since sharks cannot detect from electroreception whether or not something will satisfy their tastes, they tend to “try before they buy”, taking one or two bites and then assessing the results (our sinewy muscle does not compare well with plumper, softer prey such as seals). Repeat attacks are highly likely once a human is bleeding, however; the force of the electric field is heightened by salt in the blood which creates the perfect setting for a feeding frenzy. In areas where shark attacks on humans are likely to occur, scientists are exploring ways to create artificial electroreceptors that would disorient the sharks and repel them from swimming beaches.
<b>H</b>	There is much that we do not yet know concerning how electroreception functions. Although researchers have documented how electroreception alters hunting, defence and communication systems through observation, the exact neurological processes that encode and decode this information are unclear. Scientists are also exploring the role electroreception plays in navigation. Some have proposed that salt water and magnetic fields from the Earth’s core may interact to form electrical currents that sharks use for migratory purposes.

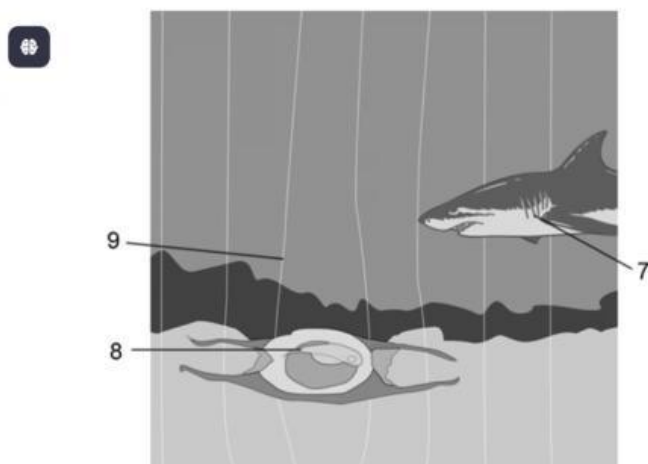


Diagram for Academic Reading practice test questions 7-9

Reading Passage 1 has eight paragraphs, **A–H**.

Which paragraph contains the following information?

Write the correct letter, **A–H**, in boxes **1–6** on your answer sheet.

1. how electroreception can be used to help fish reproduce
2. a possible use for electroreception that will benefit humans
3. the term for the capacity which enables an animal to pick up but not send out electrical signals
4. why only creatures that live in or near water have electroreceptive abilities
5. how electroreception might help creatures find their way over long distances
6. a description of how some fish can avoid disrupting each other's electric signals

Label the diagram shown previously.

Choose **NO MORE THAN TWO WORDS** from the passage for each answer.

Write your answers in boxes **7–9** on your answer sheet.

Choose the correct letter, A, B, C or D.

Shark's **7** ..... alert the young ray to its presence

Embryo moves its **8** ..... in order to breathe

Embryo stops sending **9** ..... when predator close by  
Complete the summary below.

Choose **NO MORE THAN THREE** words from the passage for each answer.

Write your answers in boxes **10–13** on your answer sheet.

### **Shark Attack**

A shark is a very effective hunter. Firstly, it uses its **10** ..... to smell its target. When the shark gets close, it uses **11** ..... to guide it toward an accurate attack. Within the final few feet the shark rolls its eyes back into its head. Humans are not popular food sources for most sharks due to their **12** ..... Nevertheless, once a shark has bitten a human, a repeat attack is highly possible as salt from the blood increases the intensity of the **13** .....