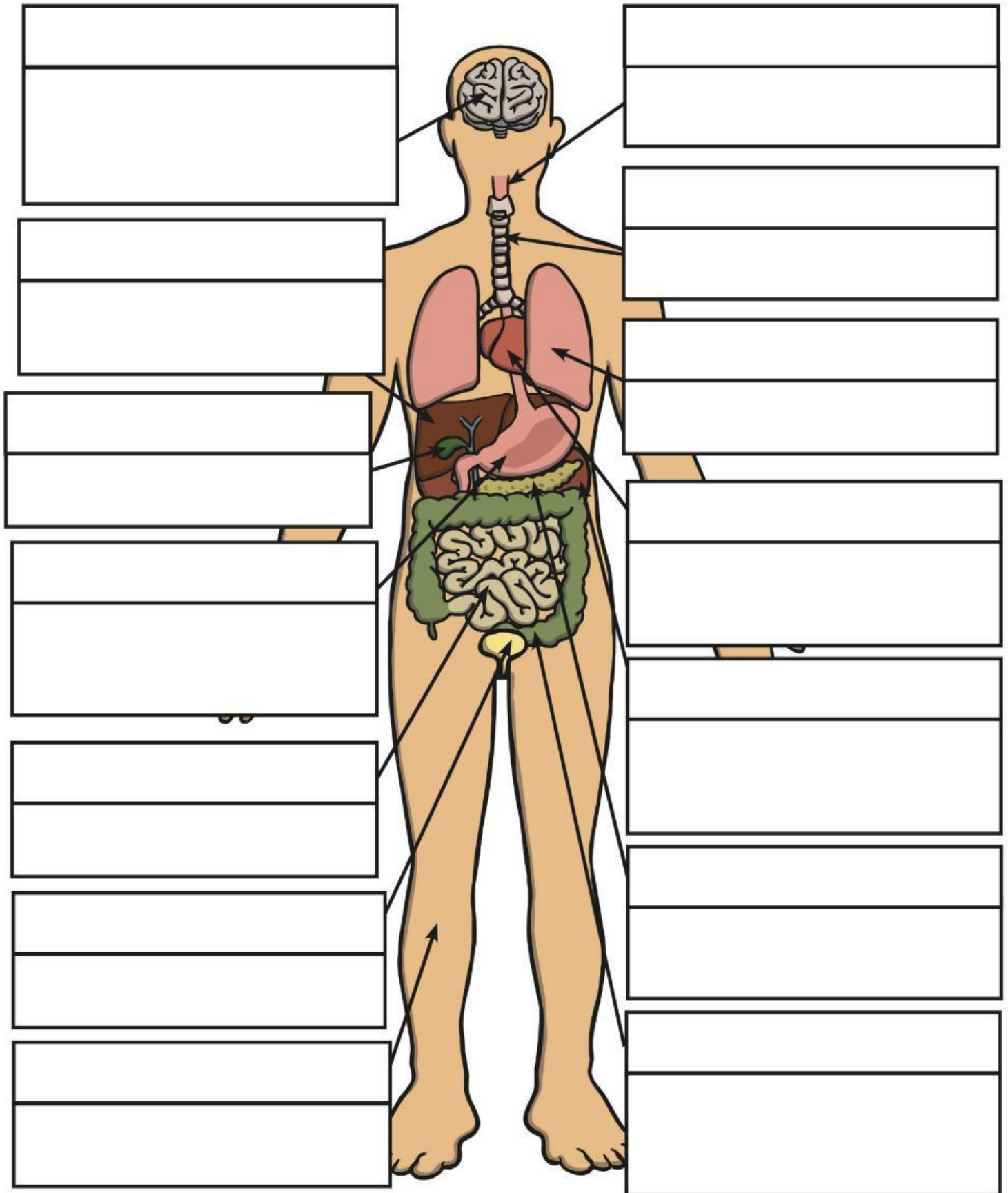


Human Organ Matching and Labelling

Cut out the organ names and descriptions and stick them down in the correct boxes on the diagram.



Maintains body temperature using sweat and goosebumps.
Controls all of our necessary bodily functions, sends the impulses which allow us to move and enables you to think and learn.
Pumps oxygenated blood around your body and receives de-oxygenated blood back.
Filters water and salt out of your blood and creates urine.
Makes bile for digestion, filters out toxins and regulates blood sugar.
Produces enzymes necessary for digestion.
Digests food using enzymes and absorbs nutrients for the blood.
Continues the digestion process, absorbs as much water as possible and expels excess fibre and waste.
Stores and concentrates bile produced by the liver.
Takes in oxygen, which reaches the blood via the heart.
Stores urine so that we can decide when we want to go to the toilet.
Transports food and drink from the mouth to the stomach.
Receives food from the oesophagus and begins to break it down with digestive juices (enzymes).
Transports air from the nose and mouth to the lungs.

oesophagus
bladder
liver
large intestine
gall bladder
kidneys
stomach
heart
pancreas
lungs
small intestine
trachea
skin
brain