



LKPD

English Worksheets

Narrative/ Imaginative story



SMPN 29 SEMARANG

Narrative Text's Structure

Orientation

The orientation of a story should answer the questions of who, where, and when. It sets the stage for the story and helps identify the character and setting.

Complication

The three parts of a story's problem are the rising action, climax, and falling action. The rising action presents the problem, the climax is the peak of the problem, and the emergence of a solution.

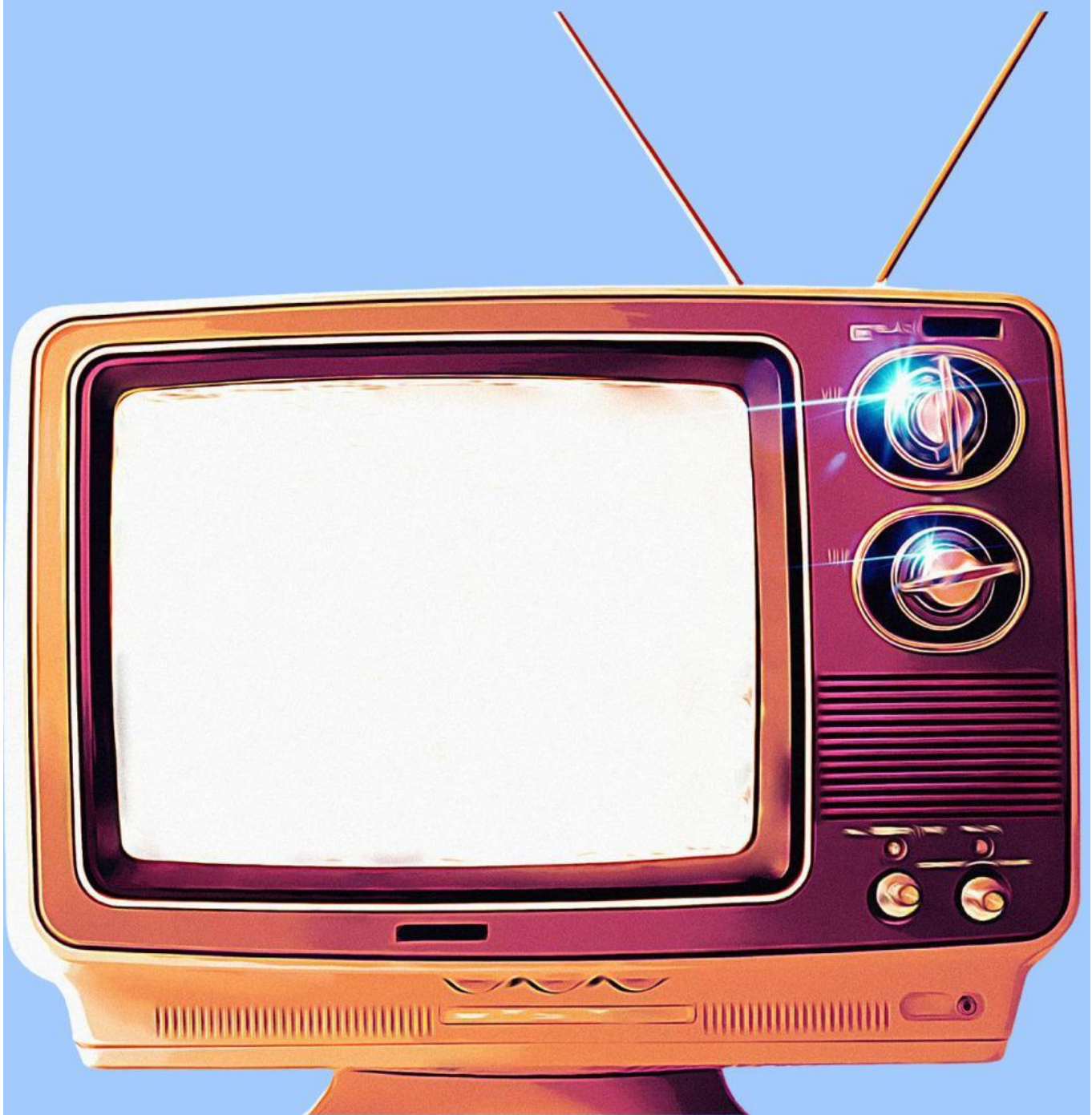
Resolution

The resolution is the part of a story where conflicts or problems introduced earlier are addressed, and characters may overcome obstacles, find solutions, or experience personal growth.

Coda

This section appears at the end of a story, providing a summary or commentary on the characters' experiences and the impact of their actions. It helps readers to reflect on the intended message or lesson.





Matching the Structures

The three parts of a story's problem are the rising action, climax, and falling action. The rising action presents the problem, the climax is the peak of the problem, and the emergence of a solution.

Resolution

The resolution is the part of a story where conflicts or problems introduced earlier are addressed, and characters may overcome obstacles, find solutions, or experience personal growth.

Complication

The orientation of a story should answer the questions of who, where, and when. It sets the stage for the story and helps identify the character and setting.

Coda

This section appears at the end of a story, providing a summary or commentary on the characters' experiences and the impact of their actions. It helps readers to reflect on the intended message or lesson.

Orientation

