

Test 2

Listening

Part 1 – 5 questions –

Listen and draw lines. There is one example.

Mary Ben Tom Paul

Example

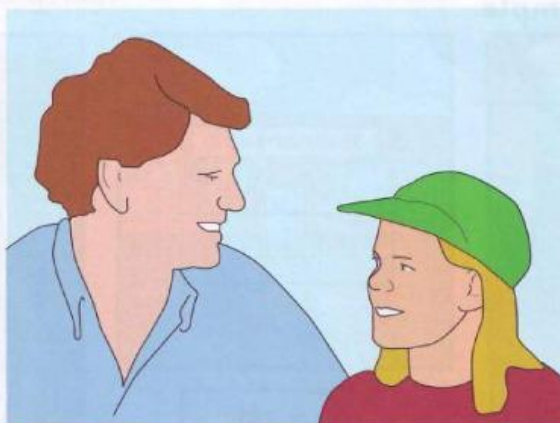
Jane Anna Pat

The illustration shows a classroom with a whiteboard, a desk with a computer, and a table with toys. A line is drawn from Mary to the door, and another line is drawn from Pat to the floor.

Part 2

– 5 questions –

Listen and write. There is one example.



Name: Mary Smith

1 How old:

2 Hair colour:

3 Eye colour:

4 How many brothers:

5 How many sisters:

Listening

Part 3

- 5 questions -

What did Paul do last week?

Listen and draw a line from the day to the correct picture.

There is one example.

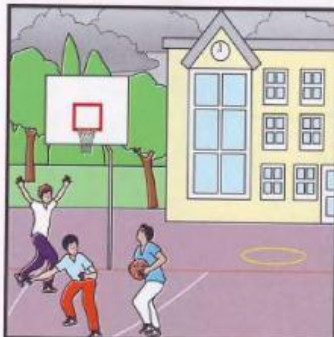


Monday



Tuesday

Wednesday

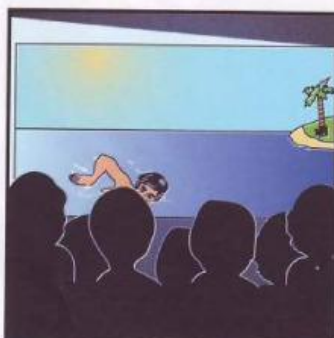


Thursday



Friday

Saturday



Sunday

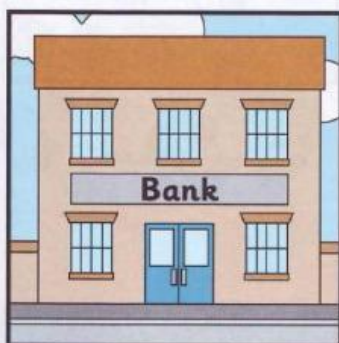


Part 4

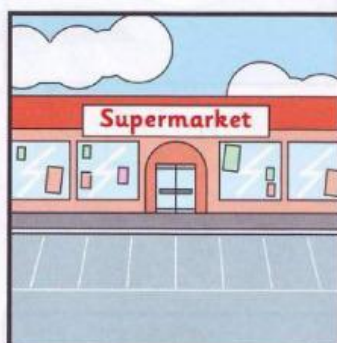
– 5 questions –

Listen and tick (✓) the box. There is one example.

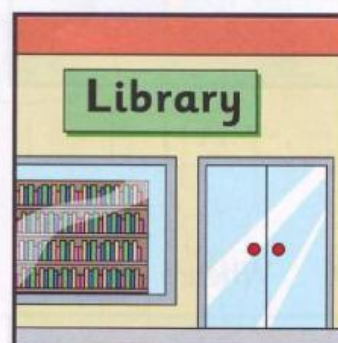
Where is Pat's dad going?



A ☒



B ☐



C ☐

1 Which one is Pat's mother?



A ☐

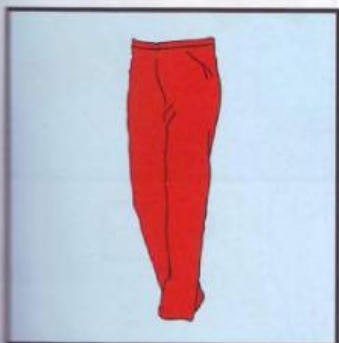


B ☐



C ☐

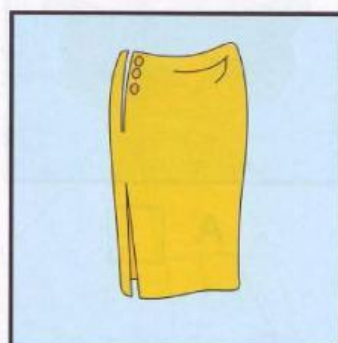
2 What does Pat want to buy?



A ☐



B ☐

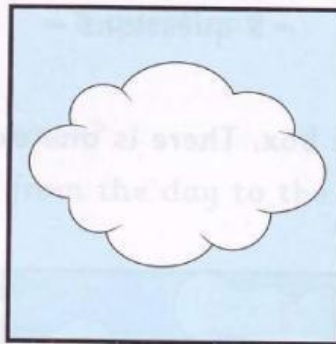


C ☐

3 What was the weather like here yesterday?



A ☐

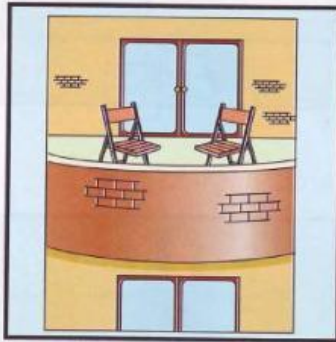


B ☐



C ☐

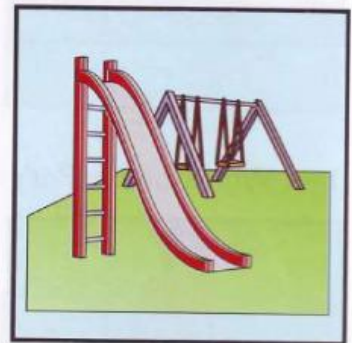
4 Where's Peter?



A ☐

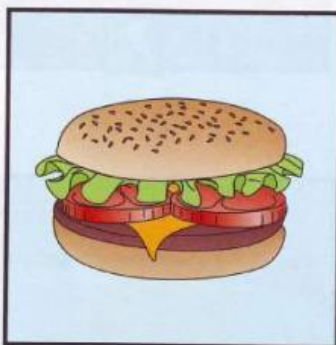


B ☐

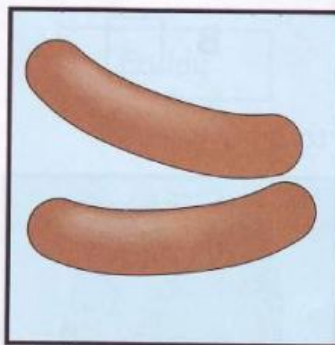


C ☐

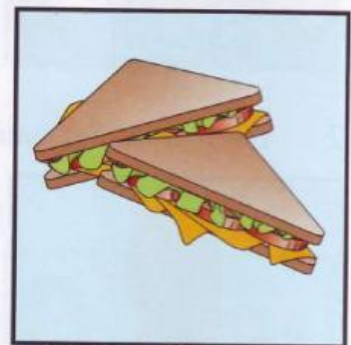
5 What will they take on the picnic?



A ☐



B ☐



C ☐

Part 5

– 5 questions –

Listen and colour and draw. There is one example.

