

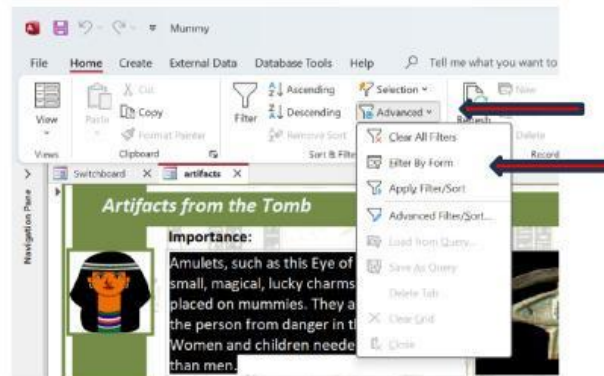


Learn more about ancient Egypt. Using Filter by Form, filter the records in the Mummy database.
Artifact type "Dress"

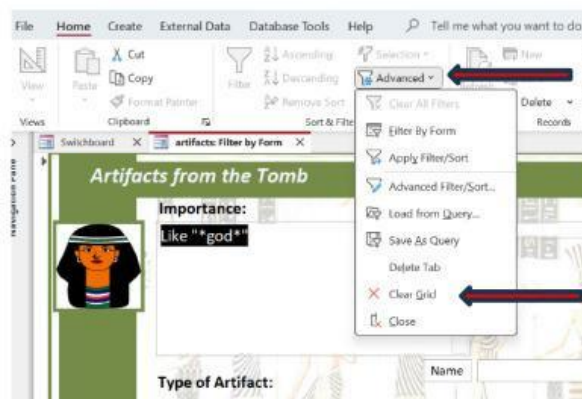
check the following steps to help you in answering the questions:

From the "Mummy 1" file, dash board, choose → View Artifacts.

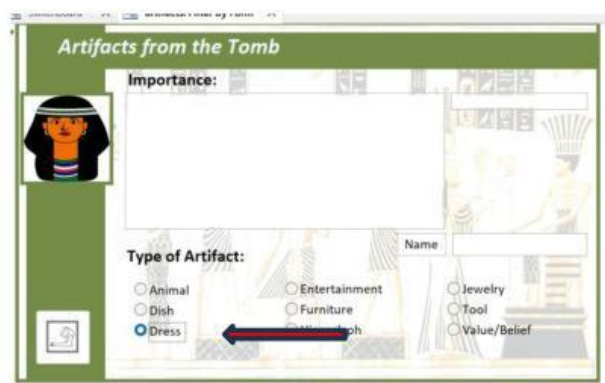
Step one: click on advanced → Filter by Form



Step two: click on advanced → clear grid



Step three: click on the dress radio button



Step four: Click toggle filter



1. How many artifacts talk about how the Egyptians dressed?

2. What fabric did the ancient Egyptians use?

3. When were wigs worn?

Give your work a rating

