

ZP Day Trading Indicator in MT4 Download - Free - [TradingFinder]



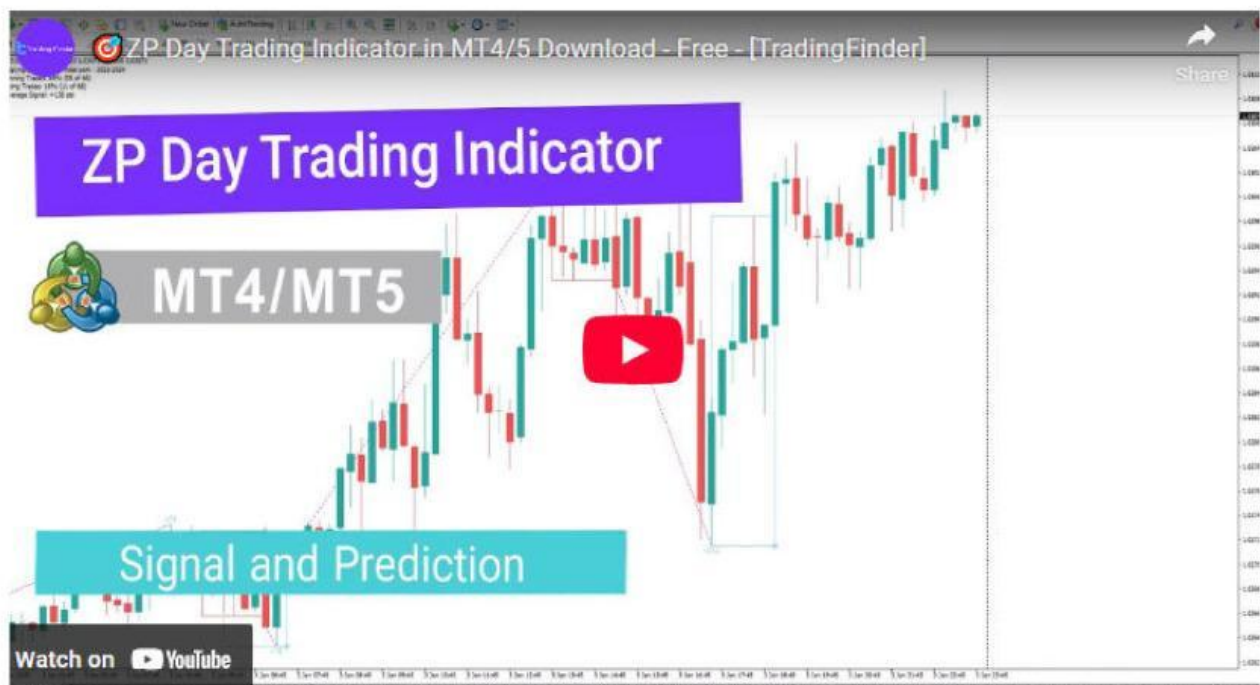
The **ZP Day Trading** Indicator identifies price **range zones** and displays them using **colored boxes** on the chart. Price fluctuations within a defined area, between a **support** and **resistance** zone, form the **trading range** zone.

This **MT4 signal and prediction indicator** is developed based on the **Price Action** trading style and, besides marking the zones, provides **entry signals** for trades.

ZP Day Trading Indicator Specifications

The table below provides an overview of the main specifications of the indicator:

Category	Signal and Prediction - Price Action - Trading Cycles
Platform	MetaTrader 4
Skill Level	Beginner
Indicator Type	Reversal - Range - Breakout
Time Frame	Multi-time frame
Trading Style	Scalping - Day Trading - Swing Trading
Market	All Markets



Buy Signal in an Uptrend

When the price breaks above the range zone, the **indicator highlights** the area with a **blue box** and generates a **buy signal** with a light **blue arrow**.

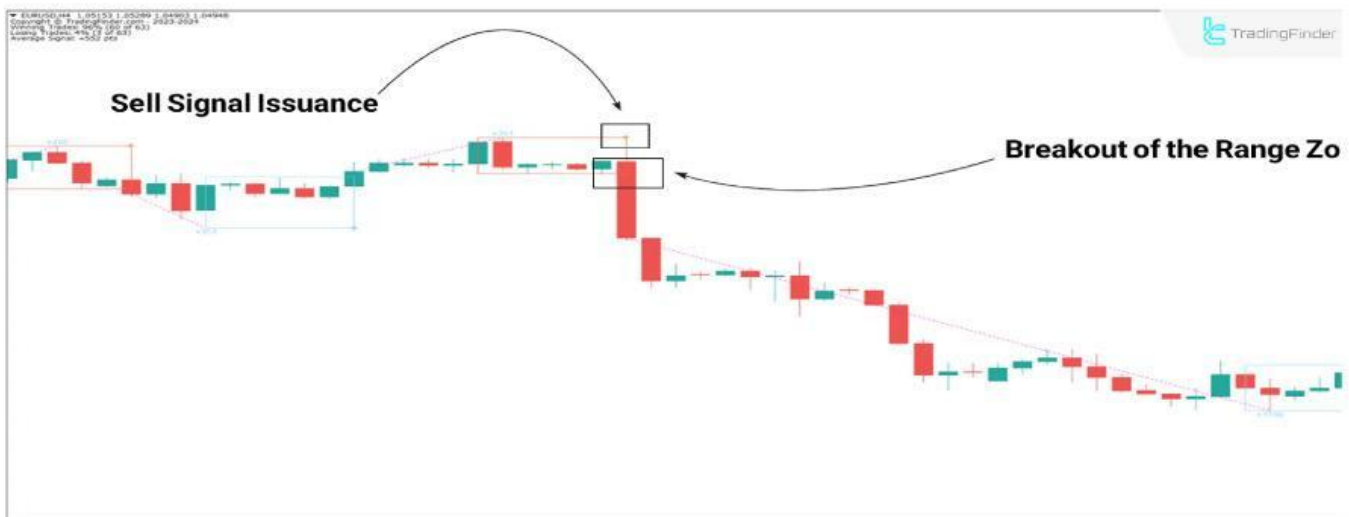
The chart of the **GBP/USD** currency pair on a **1-hour timeframe** demonstrates the indicator's functionality during an **uptrend**.



Buy signal on GBP/USD chart

Sell Signal in a Downtrend

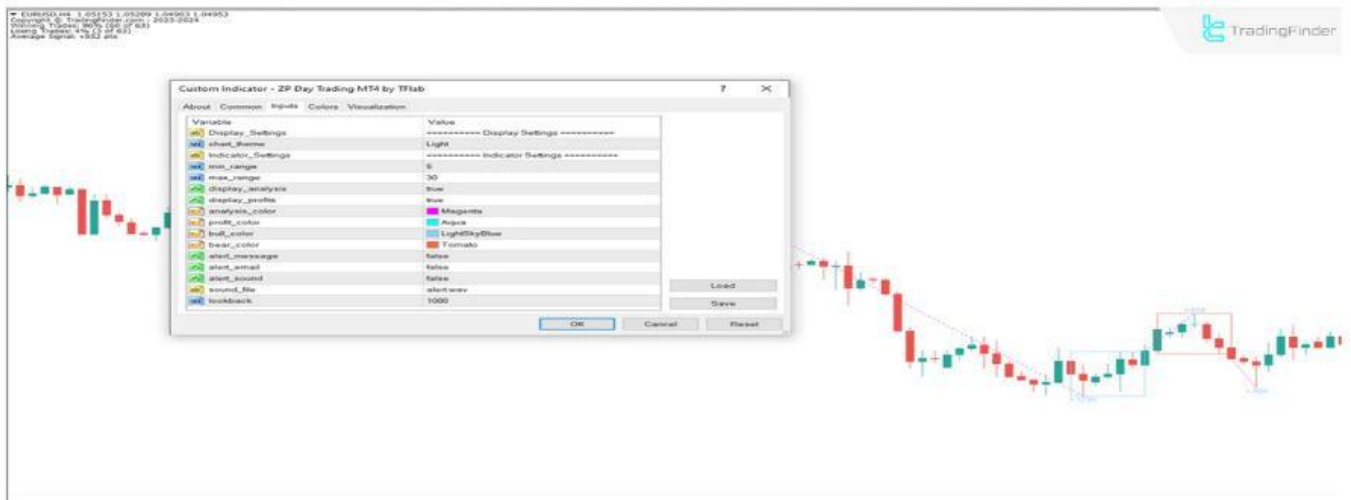
Based on the price chart analysis of the **EUR/USD** currency pair on a **4-hour timeframe**, when the price **breaks** below the range zone, the indicator marks the area with a **red box** and issues a **sell signal** using a **red arrow**.



Sell signal on EUR/USD chart

ZP Day Trading Indicator Settings

This section includes options for modifying the display parameters of the tool:



Reviewing ZP Day Trading Indicator Settings

- ⚡ **Chart theme:** Indicator theme;
- ⚡ **Min range:** Minimum range for data analysis; default value 5;
- ⚡ **Max range:** Maximum range for data analysis; default value 30;
- ⚡ **Display analysis:** Show analytical information on the chart;
- ⚡ **Display profits:** Display profit and loss amounts on the chart;
- ⚡ **Analysis color:** Color for the displayed analytical insights on the chart;
- ⚡ **Profits color:** Color representing profit;
- ⚡ **Bull color:** Color for bullish boxes;
- ⚡ **Bear color:** Color for bearish boxes;
- ⚡ **Alert message:** Alert with a message;
- ⚡ **Alert email:** Alert via email;
- ⚡ **Alert sound:** Sound alert;
- ⚡ **Look back:** Number of candles analyzed for calculations; default: 1000.

Conclusion

The **ZP Day Trading Indicator** identifies **accumulation zones** and **balance** areas between **buyers** and **sellers**, known as range zones, on the chart and provides signals for trade entries.

This **MT4 cycles indicator** is designed based on the **Price Action** trading style and can be used across **all markets**.

Sources:

1- ZP Day Trading Indicator for MT4:

<https://tradingfinder.com/products/indicators/mt4/zp-day-trading-free-download/>

2- ZP Day Trading Indicator for MT5:

<https://tradingfinder.com/products/indicators/mt5/zp-day-trading-free-download/>

3- ZP Day Trading Indicator on YouTube:

<https://youtu.be/6QDw9-YVd9I>

4- All Indicators:

<https://tradingfinder.com/products/indicators/>



[Website](#)



[Indictor link](#)



[Youtube Channel](#)



[Instagram](#)