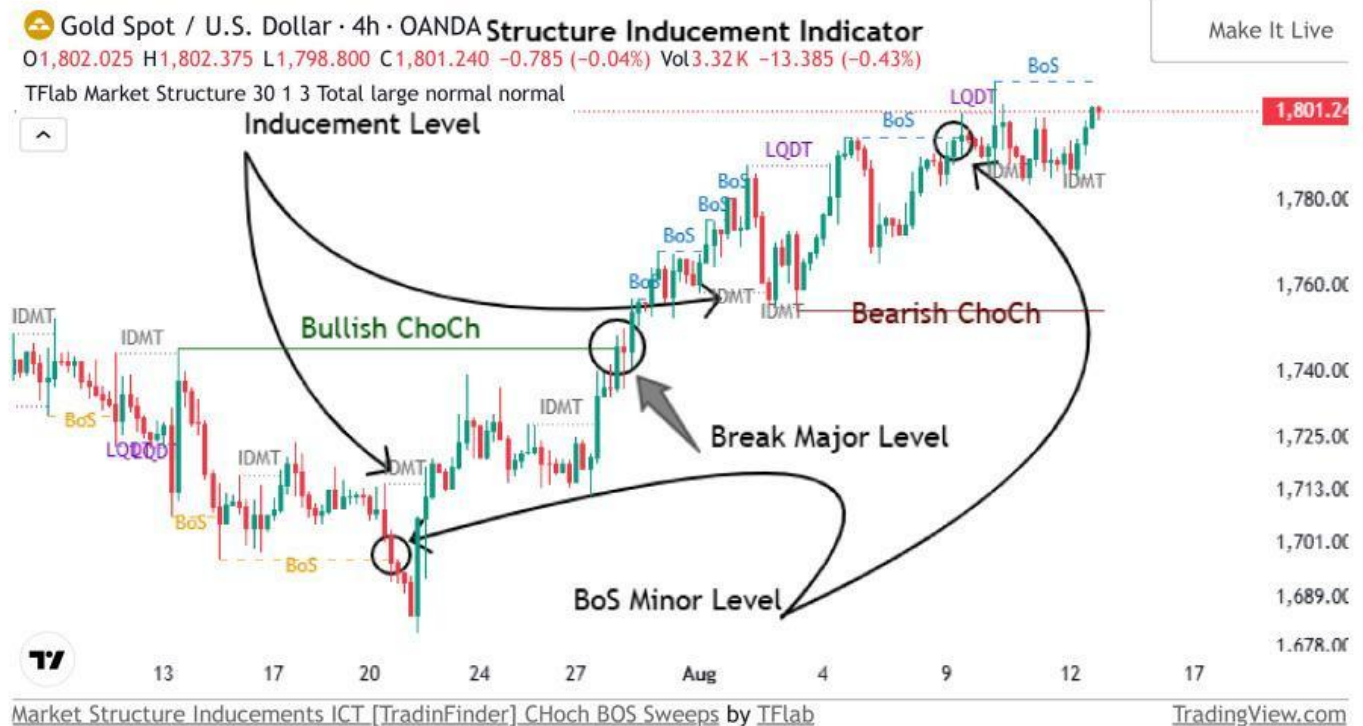


Market Structure Inducements ICT Indicator TradingView - Free - [Tradingfinder]



The **Market Structure Inducements Indicator** is developed based on **Market Structure** concepts from the **ICT (Inner Circle Trader)** trading style.

This **TradingView smart money indicator** draws **market structures** using color-coded lines on the chart, including **Change of Character (CHoCh)**, **Break of Structure (BOS)**, and **Liquidity Sweeps**.

By combining these three elements, traders can easily identify trend reversals and false breakouts.

Indicator Specifications

Category	ICT - Smart Money - Liquidity
Platform	TradingView
Skill Level	Advanced
Indicator Type	Reversal - Continuation
Timeframe	Multi Timeframe
Trading Style	Intraday Trading
Market Type	All Markets

Bullish Trend Conditions

Analysis of the **Cardano (ADA)** 15-minute price chart reveals the performance of this indicator during an uptrend.

After a **CHoCH**, several **Liquidity Sweeps** occur, yet the price continues its upward trend.

Finally, the indicator uses blue dashed lines to mark a **BOS**, indicating the continuation of the bullish trend.



Market Structure Performance in a Bullish Trend

Bearish Trend Conditions

The 1-hour price chart of the **USD/JPY currency pair** shows how the indicator performs during a bearish trend.

After a **Liquidity Sweep**, the market shifts to a downtrend. The **ChoCH** confirms the transition from bullish to bearish.

Successive **BOS** formations highlight the strength and continuation of the bearish trend.



Market Structure Performance in a Bearish Trend

Indicator Settings



Reviewing Market Structure Inducements Indicator Settings

- ⚡ **ChoCh Detector Period:** Defines the period for detecting a Change of Character, set to **27**;
- ⚡ **BoS & Liquidity Detector Period:** Sets the detection period for BOS and Liquidity Levels equal to **1**;
- ⚡ **Inducement Detector Period:** Determines the period for identifying inducement zones, set to **3**;
- ⚡ **Fast Trend Detector:** Automatically detects rapid trends;
- ⚡ **Inducement Type Detector:** Defines the type of inducement zones (e.g., Sweeps);
- ⚡ **Show ChoCh Level:** Displays CHoCH levels on the chart;
- ⚡ **Bull / Bear Colors:** Sets the colors for CHoCH zones;
- ⚡ **ChoCh Label Size:** Specifies the size of CHoCH labels;
- ⚡ **Show BoS & Liquidity Level:** Displays BOS and Liquidity Levels;
- ⚡ **Bull / Bear / LQDY Colors:** Configures the colors for BOS and Liquidity Levels;
- ⚡ **BoS & LQDY Label Size:** Adjusts label sizes for BOS and Liquidity Levels;
- ⚡ **Show Inducement Level:** Enables inducement level display;
- ⚡ **Inducement Label Size:** Sets the size of inducement labels.

Conclusion

The **Market Structure Inducements Indicator** is an advanced tool for analyzing market **structure** and identifying trading opportunities based on the **ICT trading style**.

By providing three key price **movement** structures, this **TradingView ICT indicator** simplifies trend analysis and improves the accuracy of future price movement predictions.

Sources:

1- More Information about Market Structure Inducements ICT Indicator:

<https://tradingfinder.com/products/indicators/tradingview/market-structure-inducements/>

2- Market Structure Inducements ICT Indicator in TradingView:

<https://www.tradingview.com/script/whEhJfeJ-Market-Structure-Inducements-ICT-TradinFinder-CHoch-BOS-Sweeps/>

3- Watch it on YouTube:

https://youtu.be/NZ2ZpfO_ay4

4- All TradingView Indicators:

<https://tradingfinder.com/products/indicators/tradingview/>



[Website](#)



[Indictor link](#)



[Youtube Channel](#)



[Instagram](#)