

5 WORD POWER Housework

- A** Find a phrase that is usually paired with each two-part verb. (Some phrases go with more than one verb.) Then add one more phrase for each verb.

the garbage	the magazines	the microwave	your coat
the groceries	the mess	the towels	your laptop

clean up	_____	_____	take out	_____	_____
hang up	_____	_____	throw out	_____	_____
pick up	_____	_____	turn off	_____	_____
put away	_____	_____	turn on	_____	_____

- B** What requests can you make in each of these rooms? Write four requests and four excuses. Use two-part verbs.

the kitchen	the living room
the bathroom	the bedroom

- C PAIR WORK** Take turns making the requests you wrote in part B. Respond by giving an excuse.

A: Marabel, please pick up the wet towel you left on your bed.

B: Sorry, I can't pick it up right now. I have to put my new clothes away.



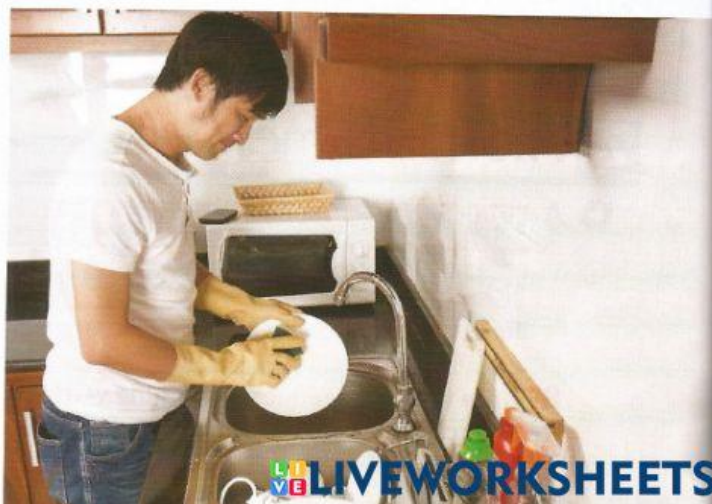
6 LISTENING Helping around the house

- A** Listen to the results of a survey about family life. Check (✓) the answer to each question. Sometimes more than one answer is possible.

	Men	Women	Boys	Girls
1. Who is the messiest in the house?				
2. Who does most of the work in the kitchen?				
3. Who does the general chores inside and outside the house?				
4. Who worries most about expenses?				

- B** Listen again. According to the survey, what specific chores do men, women, boys, and girls usually do? Take notes.

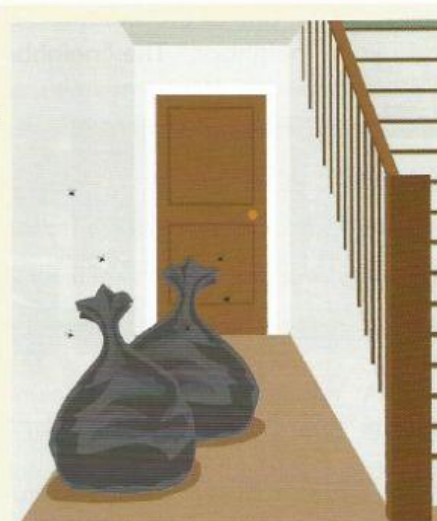
- C GROUP WORK** How does your family compare to the survey results? Who helps the most with general chores around the house? Who helps the least?



7 PERSPECTIVES Difficult neighbors

- ▶ **A** Match the sentences. Then listen and check your answers.
Are all the requests reasonable?

- | | |
|---|---|
| 1. "Would you take your garbage out, please? ____" | a. We don't want strangers to enter the building." |
| 2. "Would you mind not parking your car in my parking space? ____" | b. It often comes into my apartment through the balcony." |
| 3. "Would you mind turning the music down, please? ____" | c. It can attract insects." |
| 4. "Could you close the door behind you and make sure it locks? ____" | d. The walls are really thin, so the sound goes through to my apartment." |
| 5. "Can you keep your cat inside, please? ____" | e. I need to park mine there." |



- B** Look at the requests again. Have you ever made similar requests?
Has anyone ever asked you to do similar things?

8 GRAMMAR FOCUS

- ▶ Requests with modals and *Would you mind . . . ?*

Modal + simple form of verb

Can you **keep** your cat inside, please?

Could you **turn** the music **down**, please?

Would you please **park** your car in your space?

Would you mind . . . + gerund

*Would you mind **keeping** your cat inside?*

*Would you mind **turning** the music **down**, please?*

*Would you mind **not parking** your car in my space?*

GRAMMAR PLUS see page 137

- A** Match the requests in column A with the appropriate responses in column B. Then compare with a partner and practice them.
(More than one answer may be possible.)

A

1. Would you mind not using your phone in class? ____
2. Would you mind speaking more quietly? ____
3. Would you please turn on the air conditioner? ____
4. Can you make me a sandwich? ____
5. Can you help me with my homework? ____
6. Could you lend me twenty dollars, please? ____

B

- a. Sure, no problem. I'd be glad to.
- b. Sorry. We didn't know we were so loud.
- c. Sure. Do you want anything to drink?
- d. Sorry. I had to talk to my boss.
- e. I'm sorry, I can't. I don't have any cash.
- f. I'm really sorry, but I'm busy.

- B PAIR WORK** Take turns making the requests in part A. Give your own responses.

- C CLASS ACTIVITY** Think of five unusual requests. Go around the class and make your requests. How many people accept? How many refuse?

A: Would you please lend me your car for the weekend?

B: Oh, I'm sorry. I'm going to wash it.

Sure! I'll do it. **39**