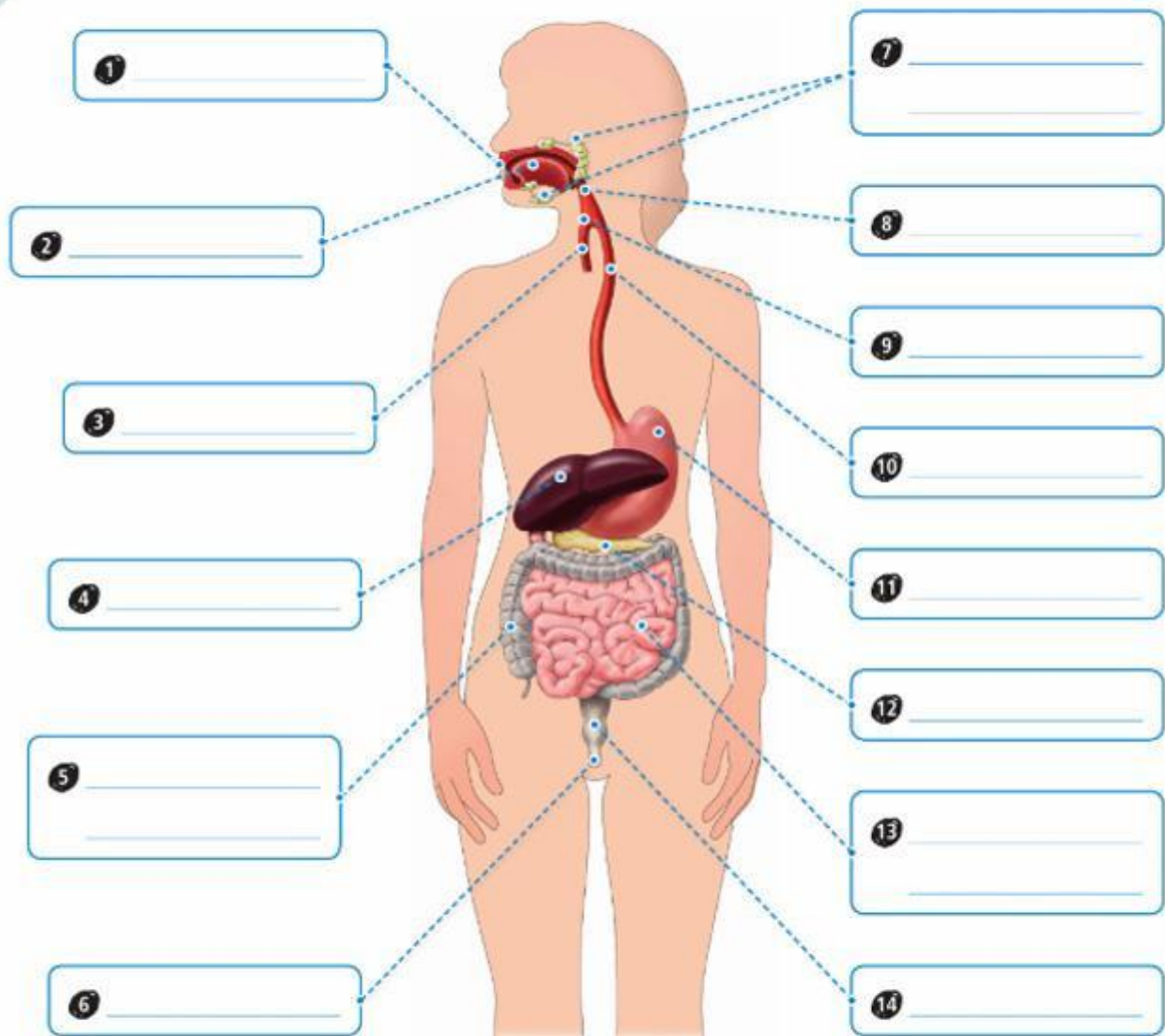


1 Label the diagram of the digestive system using the words in the box.

anus	epiglottis	large intestine	liver	oesophagus
pancreas	pharynx	rectum	salivary glands	trachea
	small intestine	stomach	teeth	tongue



2 Match the definitions to the words.

- | | | |
|---|---|------------------------|
| a Swallowed food moves to the stomach. | • | • ingestion |
| b Nutrients pass into the blood in the small intestine. | • | • defecation |
| c Food is broken down into smaller components. | • | • propulsion |
| d Unabsorbed food is eliminated through the anus. | • | • mechanical digestion |
| e Food and drink enter the body through the mouth. | • | • absorption |