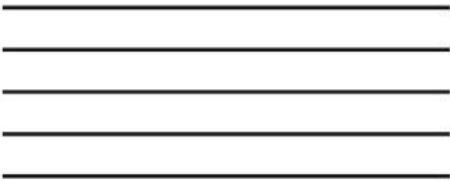






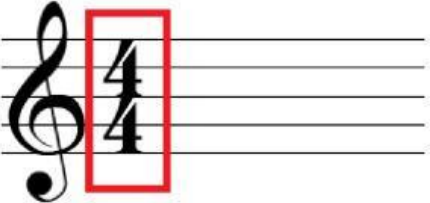
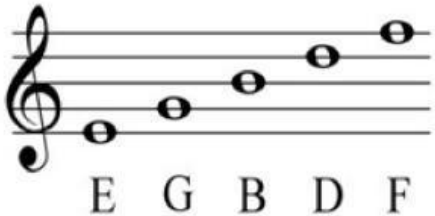
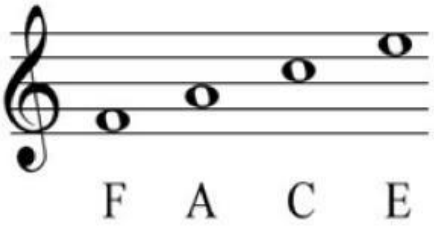
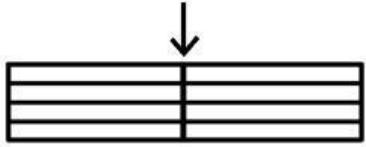
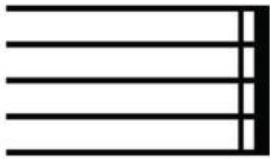


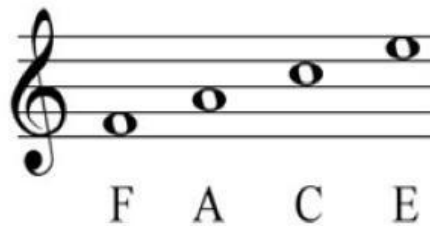
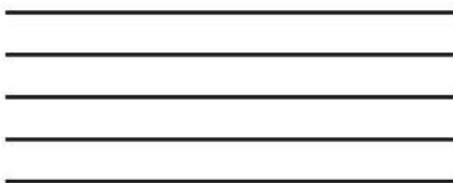
VOCABULARY REVIEW & PRACITING WITH BAG

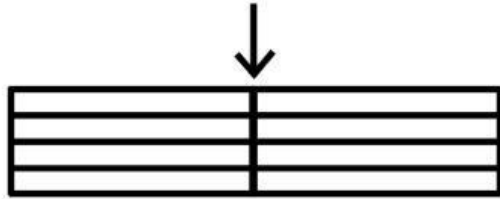
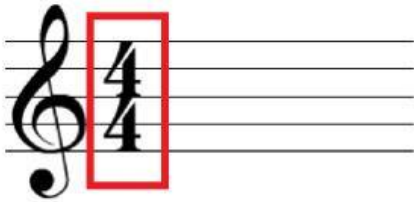
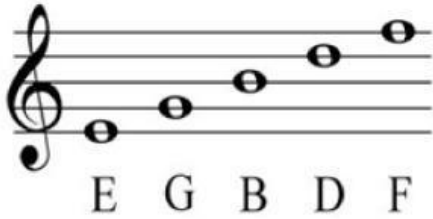
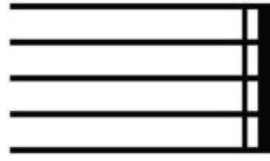
	<p>THIS IS THE...</p> <p>IT IS MADE UP OF 5 LINES AND 4 SPACES</p>
	<p>THIS IS A...</p> <p>IT TELLS YOU WHAT NOTES TO GO ON THE LINES AND SPACES ("MUSIC STAFF")</p>
	<p>THESE ARE CALLED...</p> <p>THESE ARE YOUR SHARPS, NATURALS, AND FLATS THAT ARE ADDED TO YOUR NOTES.</p>
	<p>THIS IS CALLED A...</p>
	<p>THIS IS CALLED A...</p>
	<p>THIS IS CALLED A...</p>

	<p>THIS IS CALLED A...</p> <p>WHEN YOUR (“ACCIDENTALS”) ARE ON THE STAFF, THEY FORM A KEY SIGNATURE.</p>
	<p>THE NUMBERS ARE CALLED...</p> <p>THE NUMBER ON TOP (4) TELLS YOUR HOW MANY BEATS THERE ARE.</p> <p>-----</p> <p>THE NUMBER ON THE BOTTOM (4) TELLS YOUR WHICH NOTE GET A BEAT. IN THIS CASE. 4 = “TAH”</p>
	<p>THESE ARE YOUR...</p> <p>IN (“TREBLE CLEF”), THEY ARE E, G, B, D, AND F</p>
	<p>THESE ARE YOUR...</p> <p>IN (“TREBLE CLEF”), THEY ARE F, A, C, AND E.</p>

	<p>THIS IS A...</p> <p>IT DIVIDES YOUR MUSIC STAFF INTO ("MEASURES")</p>
	<p>THIS IS A....</p> <p>IT MEANS YOU HAVE ARRIVED AT THE END OF YOUR MUSIC OR MUSICAL PHRASE.</p>

PRACTICE ONE MORE TIME!!!





OK. NEXT STEP!!!!
LET'S PRACTICE SOME NOTE READING.
THIS NEXT PAGE ARE *EXAMPLES*

THIS IS "B"



Musical notation for the letter B. The first staff shows a treble clef with a whole note on the second line (B). The second staff shows three quarter notes on the second line (B), with a comma above the second staff. Below the notes are the letters B B B.

THIS IS "A"



Musical notation for the letter A. The first staff shows a treble clef with a whole note on the first space (A). The second staff shows four quarter notes on the first space (A). Below the notes are the letters A A A A.

THIS IS "G"



Musical notation for the letter G. The first staff shows a treble clef with a whole note on the first space (G). The second staff shows four quarter notes on the first space (G). Below the notes are the letters G G G G.

NOW YOU PRACTICE B – A – G
USE THE EXAMPLES ABOVE TO HELP YOU!!!

WHAT NOTE IS THIS?



WHAT NOTE IS THIS?



WHAT NOTE IS THIS?



WHAT ARE THE NOTES?

