

External Parts of a Flower

Drag and drop the name of the external parts of a hibiscus flower into the correct box.

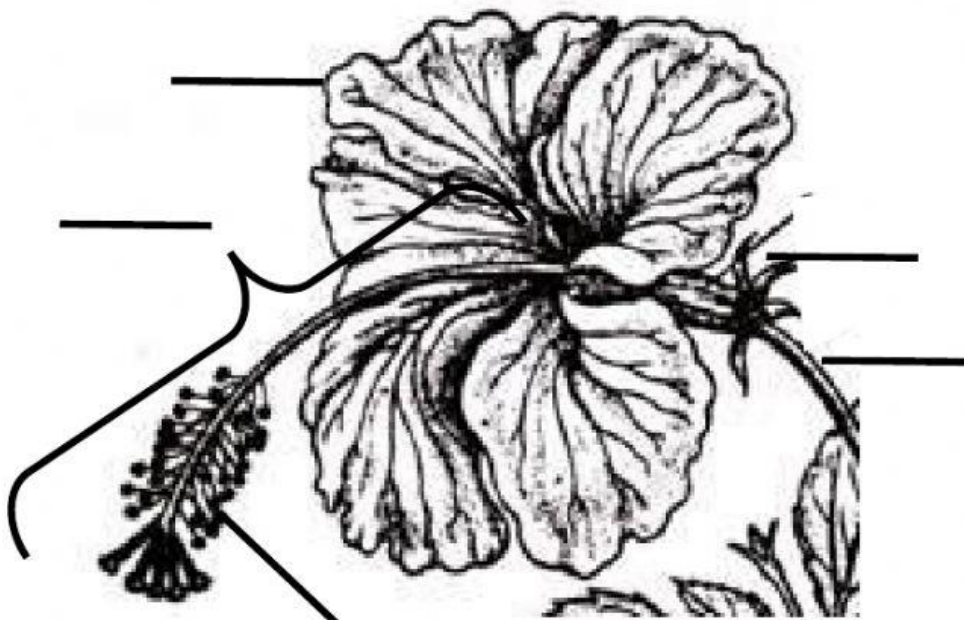
petal

sepal

pedicel

stamen

pistil



Write the part of the flower that performs each function:

Part	Function
_____	the stalk/stem of the flower. It attaches the flower to the rest of the plant.
_____	female part of the flower
_____	protects the flower in the bud stage (when it is young)
_____	attracts animals and insects to the flower
_____	male part of the flower

Read each sentence then select the true / false.

All flowers have a female part.

True / False

Flowers with ONLY male parts are called imperfect.

True / False

The hibiscus plant has perfect flowers.

True / False