

Wolfe Wave Pattern indicator for MetaTrader 4 Download - Free - [Trading Finder]



The **Wolfe Wave Pattern** indicator is a technical analysis tool in **MetaTrader 4**. It is highly useful for identifying market wave patterns. The **Wolfe Wave Pattern** comprises five geometric waves that accurately predict market reversal points. This **MT4 price action indicator** allows traders to identify suitable **Entry** and **Exit** points, thus optimizing their trading strategies.

Indicator Specifications Table

Category	Trading Assist - Price Action- Classic and Chart Patterns
Platform	MetaTrader 4
Skill Level	Beginner
Indicator Type	Reversal
Time Frame	Multi Time Frame
Trading Style	Day Trading
Markets	All Markets

Uptrend Conditions

The price chart of the **EUR/USD** currency pair in a one-hour time frame shows how the indicator works in an uptrend. As shown in the image, the indicator draws the **Wolfe Wave Pattern** by forming five waves [1-2-3-4-5]. The completion of the fifth wave and the break of the **"X" line** by the trend indicates a continuation of the uptrend and a suitable opportunity to enter a **Buy** position.



Wolfe Wave Pattern in an Uptrend

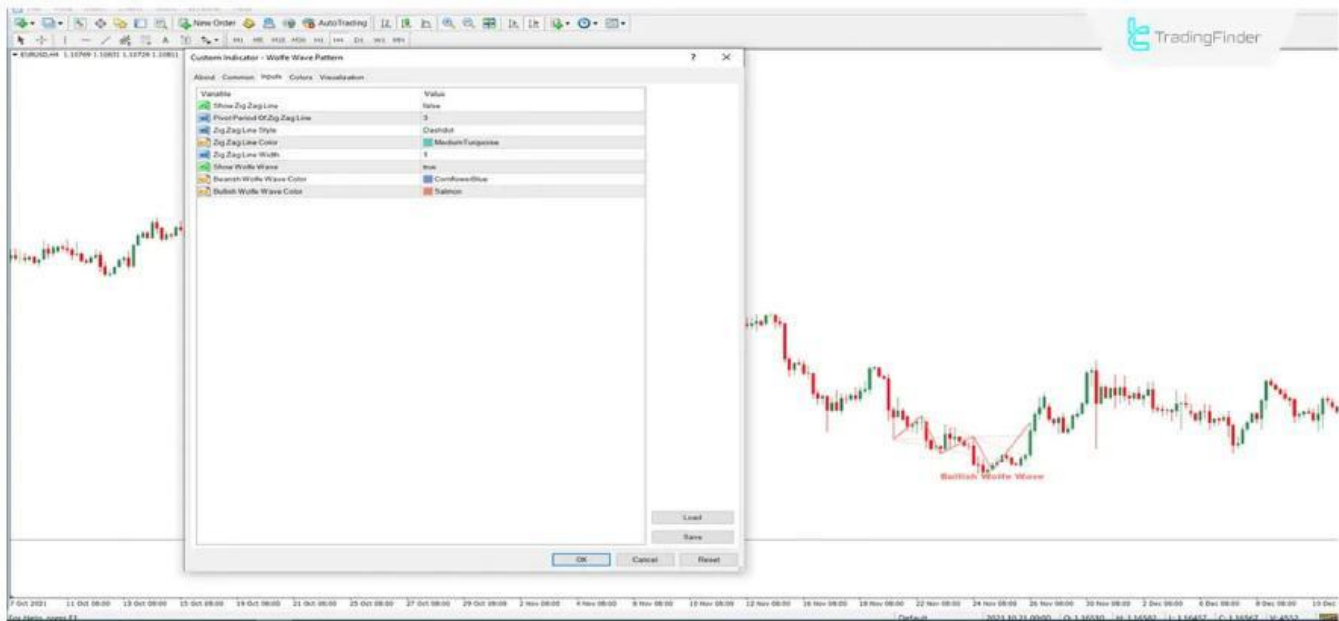
Downtrend Conditions

The price chart of the **USD/JPY** currency pair in a 4-hour time frame shows how the indicator works in a downtrend. The image shows that the indicator draws the **Wolfe Wave Pattern** by forming five waves [1-2-3-4-5]. The completion of the fifth wave and the break of the "**X**" line by the trend indicates a continuation of the downtrend and a suitable opportunity to enter a **Sell** position.



Wolfe Wave Pattern in a Downtrend

Settings



Wolfe Wave Pattern Indicator Settings

- ⚡ **Show Zig Zag Line:** Display of the Zig Zag line is disabled.
- ⚡ **Pivot Period of Zig Zag Line:** The number of candles to calculate between peaks and troughs is set to 3.
- ⚡ **Zig Zag Line Style:** The appearance of the Zig Zag line is set to DashDot.
- ⚡ **Zig Zag line color:** You can change the color of the Zig Zag line in this section.
- ⚡ **Zig Zag Line width:** The thickness of the Zig Zag line is set to 1.
- ⚡ **Show Wolfe Wave:** Display of the Wolfe Wave Pattern is enabled.
- ⚡ **Bearish Wolfe Wave Color:** The Bearish Wolfe Wave Pattern color is set to blue.
- ⚡ **Bullish Wolfe Wave Color:** The Bullish Wolfe Wave Pattern color is set to pink.

Summary

This indicator applies to all markets and time frames in the **MetaTrader 4** platform. The **Wolfe Wave Pattern** indicator draws a **Reversal** pattern at key trend reversal points like **Support** and **Resistance**. Additionally, the Wolfe Wave pattern can be used to identify **Trend Lines**. This trading tool, part of the **classic and chart patterns indicators in MT4**, falls under this category.

Sources:

1.Wolfe Wave Pattern indicator for MT4 :

<https://tradingfinder.com/products/indicators/mt4/wolf-wave-pattern-free-download/>

2.Wolfe Wave Pattern indicator for MT5 :

<https://tradingfinder.com/products/indicators/mt5/wolf-wave-pattern-free-download/>

3.All indicators :

<https://tradingfinder.com/products/indicators/>

4.This video in Youtube channel:

<https://www.youtube.com/watch?v=pLRcJhGZ7bc>



[Website](#)



[Indictor link](#)



[Youtube Channel](#)



[Instagram](#)