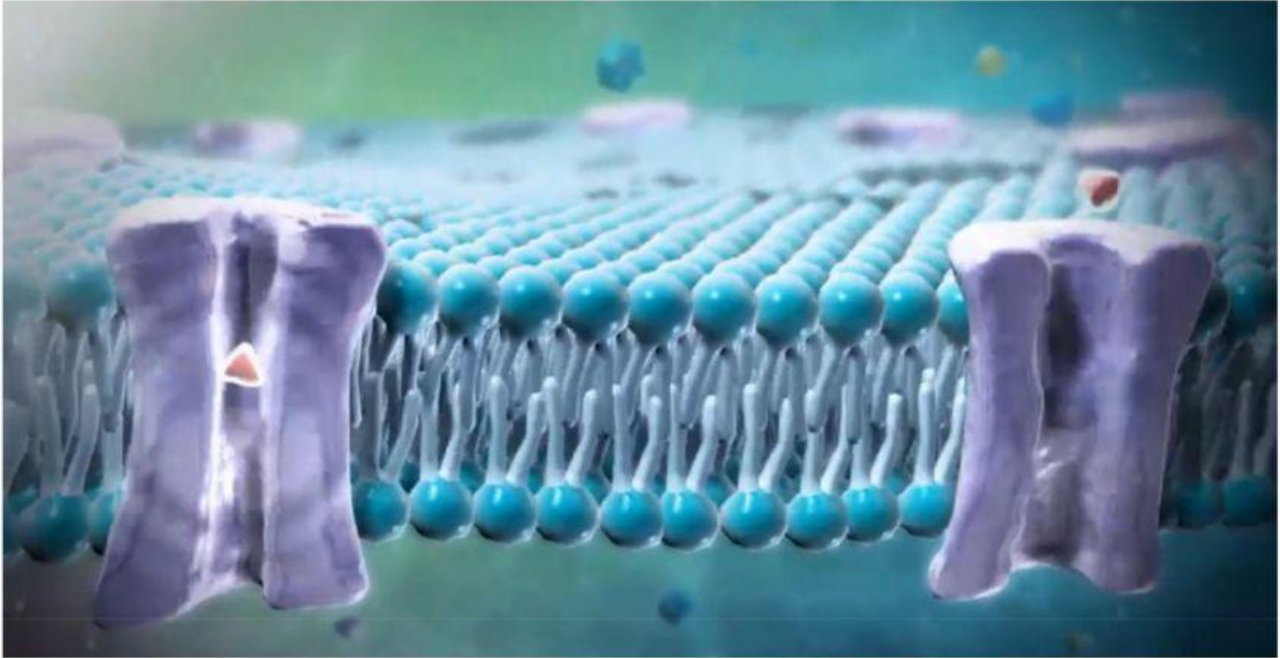


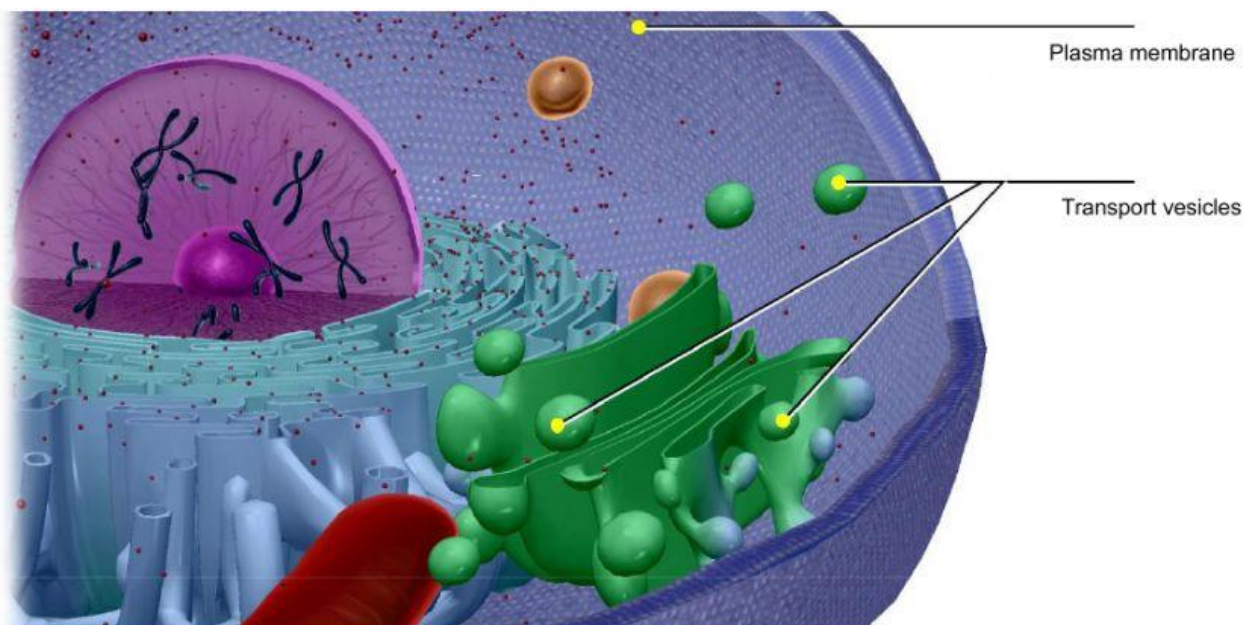
name

B. Transport and Osmosis

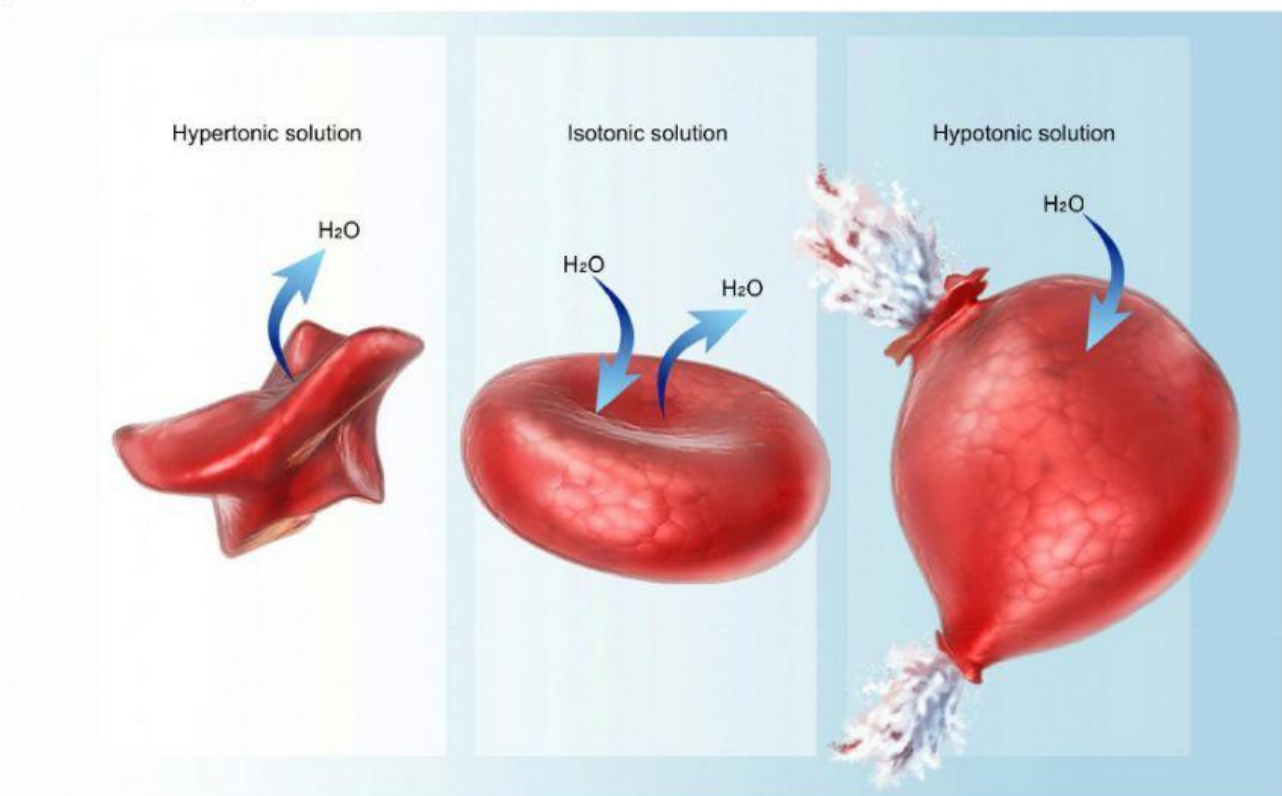
Module 2.4 Passive and Active Transport



Module 2.5 Transport Vesicles



Module 2.6 Osmosis



1. Moving substances from an area of low concentration to an area of high concentration is not energetically favourable. How do cells move substances that are of low concentration on one side of a cell membrane to the other side, where they are relatively high?

2. Some substances are transported within the cell, or across membranes, within membranous sacs. What are these structures called?