



Live Worksheet 2

Medical Assistance

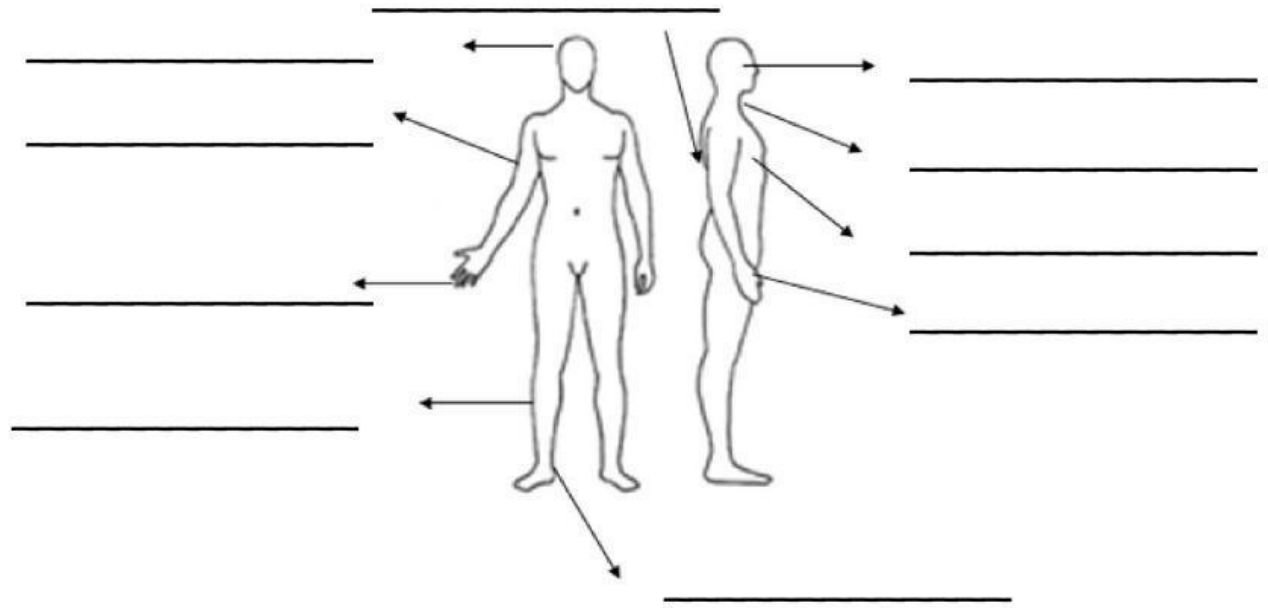
Following your study with the flipped book, Worksheet 2 will guide you through situations where medical assistance is needed on board. You'll cover important topics like body parts, medical procedures, and how to effectively communicate when requesting medical help. This worksheet helps you apply your knowledge of maritime communication and medical protocols in real-life situations.

A Read the words. Draw the arrows to match the body parts with the types of protective clothing.

- | | | | |
|----------|---|---|----------------|
| 1. Feet | • | • | safety gloves |
| 2. Eyes | • | • | ear defender |
| 3. Head | • | • | safety goggles |
| 4. Hands | • | • | safety boots |
| 5. Ears | • | • | hard hat |



B



C

Bruised

cut

strained

burn

- The motorman (1)_____ his finger when the chisel slipped.
- The radio operator (2) _____ his arm when he bumped into the table.
- The cook (3) _____ his arm in the fire
- The mechanic (4) _____ his back when lifted some equipment



D Read the article from the safety manual in flipbook.
Complete the information in the table below.

Injury	Cause	Prevention
cuts	sharp machinery	1) _____ 2) _____
burns	1) _____ 2) _____ 3) _____	1) _____ 2) handle chemical cargos safely
back strain	1) lifting heavy objects 2) not using lifting equipment	_____
eye injuries	1) _____ 2) _____ 3) _____	_____
broken arms and legs	1) not wearing safety boots. 2) _____	_____



E Choose the correct answer

1. Look at the message and decide whether distress, urgency or safety procedure should be used "I have lost propeller, need tug assistance"
 - a. distress
 - b. safety
 - c. urgency
2. What does PAN - PAN means?
 - a. a mobile unit or person is threatened by grave and imminent danger and request immediate assistance.
 - b. the calling station has very urgent message to transmit concerning the safety of a mobile or person.
 - c. the calling station has an important navigational or meteorological warning to transmit.

F Match the two halves to make full sentences.

- | | | |
|-----------------------|---|---------------------------------------|
| 1. I require ... | • | • ... doctor on board? |
| 2. What kind of... | • | • ... injured person is not possible. |
| 3. Helicopter ETA ... | • | • ... medical assistance. |
| 4. Do you have ... | • | • ... within 2 hours. |
| 5 Transfer of... | • | • ... assistance is required? |



G Read the injury text and choose the correct verbs below to fill in the blank:

caused

avoided

passed

fractured

maintained

A broken leg sustained during a berthing operation (IMO FSI14, No14)

What happened?

A ship was in the process of berthing in a relatively strong wind and tide. The master on the bridge was using the main engine, rudder and bow thrusters to hold the vessel alongside while the mooring lines were (1) _____ ashore by the forward and after mooring parties.

The forecastle party, led by the boatswain, had run a line from each of the port and starboard mooring winches before being made fast ashore. Tension came on the forward mooring lines suddenly which (2) _____ one line to part and (3) _____ the boatswain's right leg in two places.

Why did it happen?

1. The mooring rope which parted was in a poor condition.
2. The maintenance of the ship's mooring lines was inadequate.
3. The boatswain was standing in an unsafe position in the "snap-back" zone of the mooring line.

What can we learn?

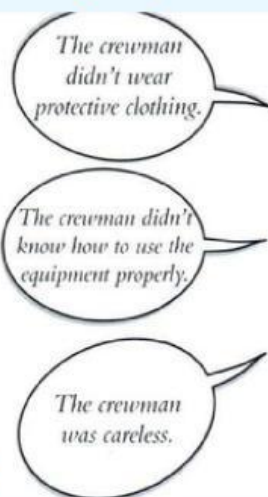
Mooring operations carry risks due to the loads placed on lines and equipment. Mooring lines must be regularly inspected and carefully (4) _____



H Match the verbs on the left to the words on the right to make full phrases.

- | | | |
|------------------|---|--------------------------|
| 1. Take... | • | • ... casualties |
| 2. Secure ... | • | • ... height |
| 3. Report ... | • | • ... immediate action |
| 4. Fall from ... | • | • ... the area |
| 5. Prepare.... | • | • ... an accident report |

I Listen the cassette. There are four dialogues between medical officers and injured seafarers. What was the injury? What was the cause of each injury?



1. Injury : back strain

Cause: the crewman was careless

2. Injury : _____

Cause: _____

3. Injury : _____

Cause: _____

4. Injury : _____

Cause: _____



J

look at the pictures. Use the verbs mention below to describe what happen in each situation. Use a negative and "because" in each sentence.



Slip/wear

click the button to record your answer



He **slips** on the deck because
doesn't **wear** his safety boots



Cut/wear

click the button to record your answer



strain/lift

click the button to record your answer



hurt/wear

click the button to record your answer

