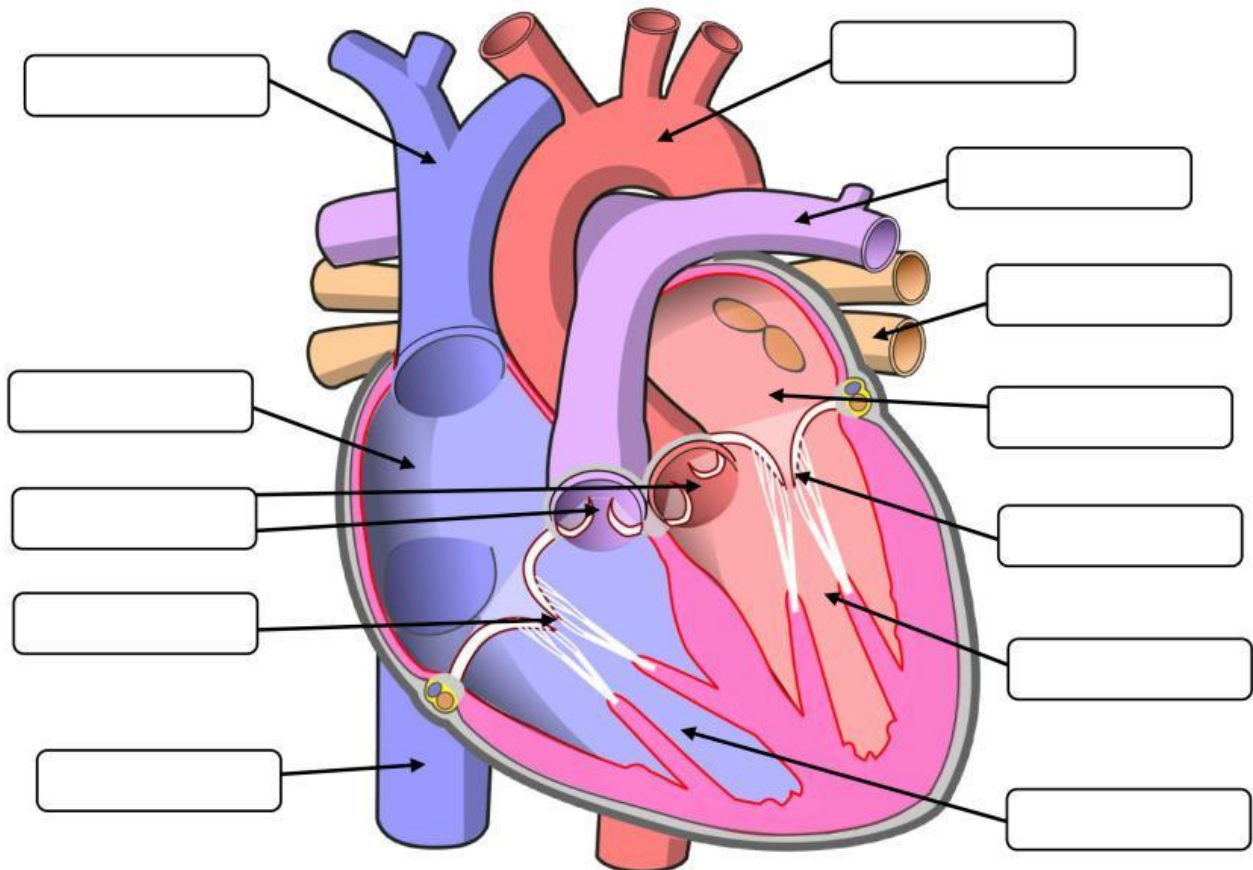


STRUCTURE OF THE HUMAN HEART

DRAW AND DROP

Instruction: Label the heart by dragging the names of its parts and dropping them to the correct location.



right atrium

left atrium

superior vena cava

bicuspid valve

right ventricle

left ventricle

inferior vena cava

tricuspid valve

pulmonary vein

pulmonary artery

aorta

semilunar valves

The Human Circulatory System

DROP DOWN

Instruction: Choose the correct part of the heart as described by the its function and drop it down.

	Function	Part of the Heart
1.	Carries deoxygenated blood from right ventricle to the lungs.	
2.	Divides the right and left sides of the heart.	
3.	Guards the opening between the left atrium and left ventricle.	
4.	Brings deoxygenated blood from head, neck and upper limbs.	
5.	Receives oxygenated blood from the lungs.	
6.	Guards the opening between the right atrium and right ventricle.	
7.	Prevent expelled blood from flowing back into the heart.	
8.	Receives deoxygenated blood from all parts of the body.	
9.	Carries oxygenated blood from lungs into the left atrium.	
10.	Brings deoxygenated blood from the lower parts of the body.	