

SECTION A- Multiple Choice

Instructions: Read each statement carefully, then choose the best possible answer by circling the letter A, B, C or D.

1. Which of the following is more likely to cause an unhealthy condition in the human body?

- | | |
|---------------------|---------------------------|
| A. Balance diet | B. Growth |
| C. Lack of exercise | D. Regular sleep schedule |

2. A normal human body temperature is recorded Which is the correct body temperature?

- | | |
|-----------|-----------|
| A. 90.60F | B. 92.40F |
| C. 98.60F | D. 99.20F |

3. Which of these is a pathogenic disease?

- | | |
|-----------------|--------------|
| A. Asthma | B. Diabetes |
| C. Hypertension | D. Influenza |

4. What is the definition of health science?

- A. The study of the human body, how it works and what keeps it working properly.
- B. The state of complete mental, physical, and emotional well-being.
- C. The study of living things which includes animals and plants.
- D. This is practices that serve to promote health and habits of cleanliness.

5. Which of these statements about cells is true?

- A. All cells in the human body have a nucleus
- B. All the cells in the human body have a cell membrane
- C. All the cells in the human body have a cell wall
- D. All cells in the human body haemoglobin

6. Which of the following is a physiological disease?

- | | |
|--------------|-----------|
| A. Pneumonia | B. Cancer |
| C. Influenza | D. Herpes |

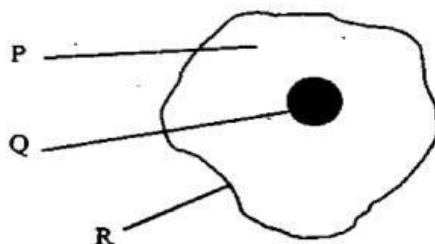
7. Which of the following characteristics of living organism enables them to detect and respond to stimuli?

- | | |
|-----------------|-------------|
| A. Irritability | B. Growth |
| C. Respiration | D. Movement |

8. Which characteristic of living things are most responsible for providing you with the energy needed to run.

- | | |
|---------------------------------|------------------------------|
| A. Excretion and movement | B. Nutrition and respiration |
| C. Reproduction and respiration | D. Reproduction and growth |

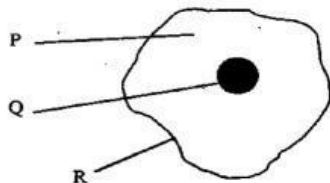
The diagram below represents a human cheek cell.



9. Which row in the table below gives correct information about the three parts of the cheek cell?

	P	Q	R
A	Is the jelly-like substance	Controls what the cell does	Is partially permeable
B	Is partially permeable	Is the jelly-like substance	Controls what the cell does
C	Controls what the cell does	Is partially permeable	Is the jelly-like substance
D	Is partially permeable	Controls what the cell does	Is the jelly-like substance

10. The diagram below represents a simple animal cell. Which lines point to membranes?



A. P and Q

B. P and R

C. Q and S

D. Q and R

11. What is the correct definition for stimulus?

A. The way a person pulls their hand away from a hot object.

B. The way light reflects off of an object, into our eyes.

C. A change in the environment that causes a reaction.

D. A simple reflex.

12. Which structure found in cells contains genes and chromosomes?

A. Cytoplasm

B. Membrane

C. Nucleus

D. Vacuole

13. Increasing in height as you become older is an example of which characteristic of living thing?

A. Respiration

B. Growth

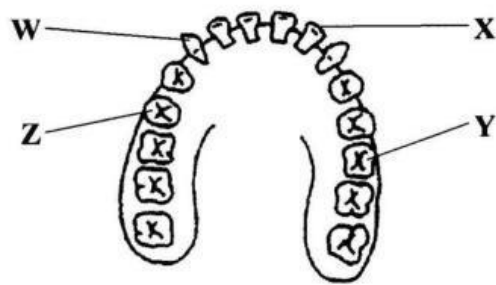
C. Reproduction

D. Irritability

14. In what part of the cell does the process of respiration occur?

- A. Nucleus
- B. Lungs
- C. Cytoplasm
- D. Mitochondria

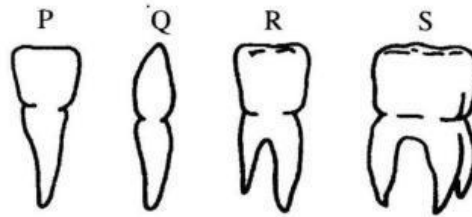
15. The diagram below represents the teeth in the lower jaw of a human.



Which statements correctly identifies teeth W and X?

- A. W is a canine and X is an incisor
- B. W is an incisor and X is a canine
- C. W is a molar and X is a premolar
- D. W is a premolar and X is a molar

16. This diagram shows the four different types of teeth found in the human mouth.



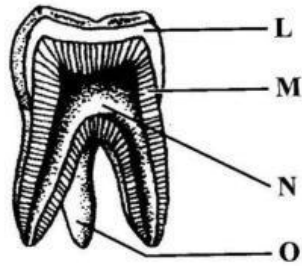
Which types of teeth are not found in the full set of human, temporary teeth?

- a. R
- b. S
- c. Q and R
- d. R and S

17. What is the difference between the total number of temporary teeth and the total number of permanent teeth in humans.

- a. 4
- b. 8
- c. 12
- d. 20

The diagram shows the internal structure of a tooth. Answer questions 18 and 19 based on the diagram.



18. Which letter points to the dentine?

- a. L
- b. M
- c. N
- d. O

19. Which type of tooth is shown in the diagram?

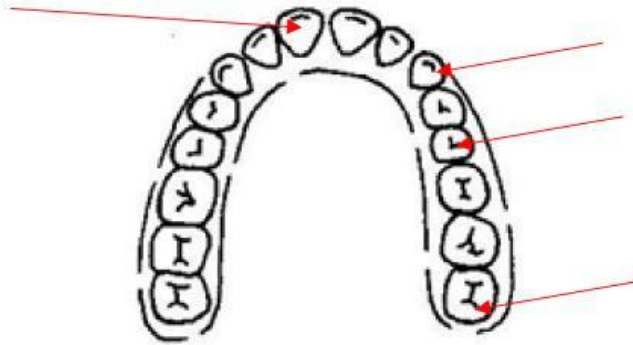
- a. Canine
- b. Incisor
- c. Premolar

20. Why is fibre important in the diet?

- a. It provides the body with energy.
- b. It allows for the growth of body tissues.
- c. It protects the body cells from diseases.
- d. It prevents constipation.

SECTION 2- Structured Questions

1. This diagram shows the arrangement of permanent teeth in the upper jaw.



- a. On the diagram, label **one** incisor tooth, **one** canine tooth, **one** premolar tooth and **one** molar tooth. [4]

- b. What are **two** important functions of the teeth?

- c. Two main minerals in our diet are essential for strong, healthy teeth.

Name one of these minerals [1]

- d. This table gives information about the human, permanent set of teeth. Fill in the missing parts of the table.

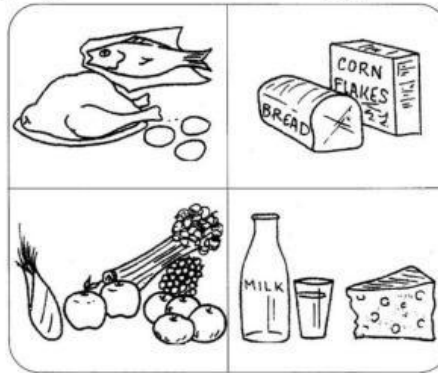
TYPE OF TOOTH	NUMBER IN UPPER JAW	NUMBER IN LOWER JAW
Incisor	4	4
	2	2
	4	4
Molar	6	6

[2]

- e. Why is it recommended that people go the a dentist for regular dental examinations?

[1]

2. The chart shows the main food groups. Use the chart to help you answer the questions that follow.



- a. Name THREE food groups.

- i. _____
ii. _____
iii. _____ [3]

- b. Identify the food groups which provide the body with this vitamin and this mineral.

- i. Vitamin C _____
ii. Iodine _____ [2]

- c. (i) Name the food group that will provide a vegetarian's diet with the nutrient protein?

_____ [1]

- (ii) Explain how the body uses the nutrient protein.

_____ [1]

- d. Which food group should a pregnant woman eat to ensure that her baby is born with strong healthy bones?

_____ [1]

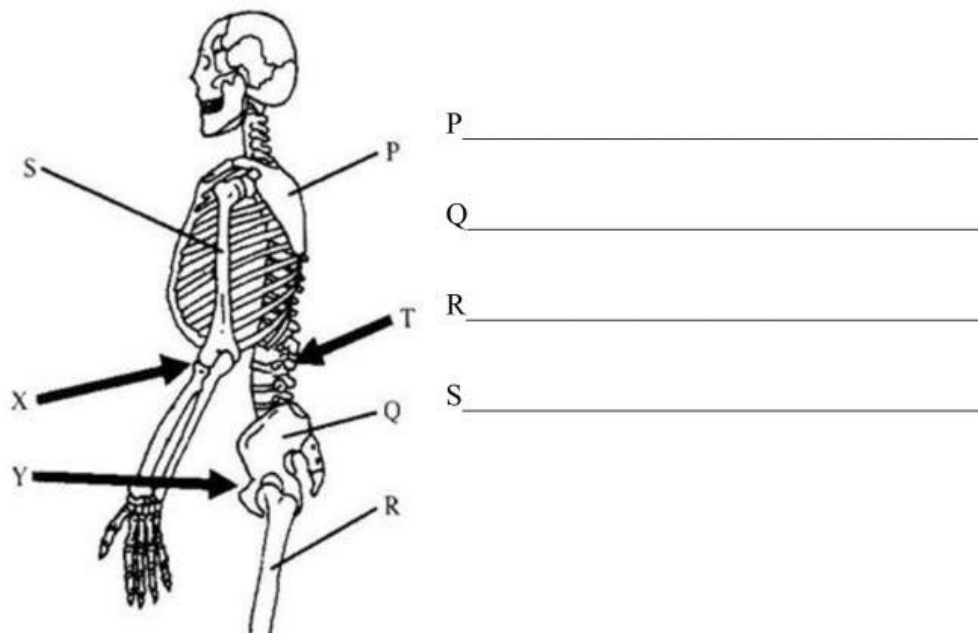
- e. Name TWO other food nutrients.

_____ [1]

TOTAL MARKS [10]

3. The diagram below shows part of the human skeletal system.

a. Write the names of the bones labelled P, Q, R, and S.



[4]

b. What is the total number of bones that make up the skeletal system? _____ [1]

c. On the diagram, T points to the backbone. What are the individual bones of the backbone called?

_____ [1]

d. On the diagram, X and Y points to two joints. Tell what type of joint each one is.

i. Joint X _____

ii. Joint Y _____ [2]

e. Where is synovial fluid found and what is its function?

i. Where is found _____

ii. Function _____ [2]

TOTAL MARKS [10]