

My name is: _____

WORKSHEET

FFs 2: Unit 10,11,12



Teacher's feedbacks

Task 1: Complete the sentences using the correct word from the list.

1. The Nile River is the longest river in the world and _____ the Mediterranean Sea.
2. The tallest _____ in the world is the Burj Khalifa in Dubai.
3. The Golden Gate _____ connects San Francisco to Marin County.
4. Malta covers an area of about 316 _____.
5. He set a new world _____ for the 100-meter sprint.
6. If you save 20 _____ of your salary each month, you will have a good amount of savings.
7. The teacher asked us to keep a _____ of our daily reading progress.

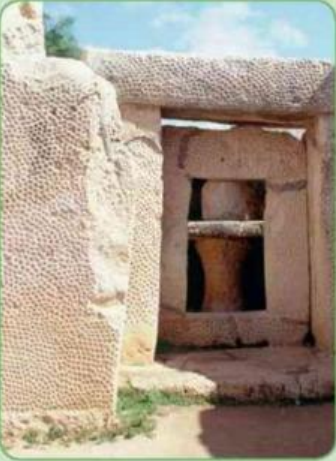
record
bridge
building
percent
Malta
square kilometer
flow into


Task 2: Read each statement carefully. Write T for True and F for False:

World Records

Here are some of the world's records!
There are many interesting facts!


The Ggantija temples are in Malta. The temples are over 5,500 years old! They are the oldest temples in Europe!






The longest bridges over water are the two bridges over Lake Pontchartrain in the USA. The bridges are nearly 24 miles long. You can't see land from the middle of the bridges!

Russia is the biggest country in the world. It is 17,075,400 square kilometres! That is 12.5% of the Earth's surface! In Russia, there are 11 different time zones. Russia is between Europe and Asia.





The longest river in the world is the Nile. The Nile is 6,695 kilometres long. The Nile flows through nine countries in Africa. The last country is Egypt. From Egypt, it flows into the Mediterranean Sea.

1. The Ggantija temples are located in Russia.
2. The Ggantija temples are over 5,500 years old.
3. The longest bridges over water are in the USA.
4. The bridges over Lake Pontchartrain are 10 miles long.
5. Russia is the biggest country in the world.
6. Russia has 5 different time zones.
7. Russia is located in both Europe and Asia.
8. The Nile River is the longest river in the world.
9. The Nile River is 5,000 kilometers long.
10. The Nile flows into the Pacific Ocean.

1

LIVEWORKSHEETS

Task 3: Listen and tick. There is one example:

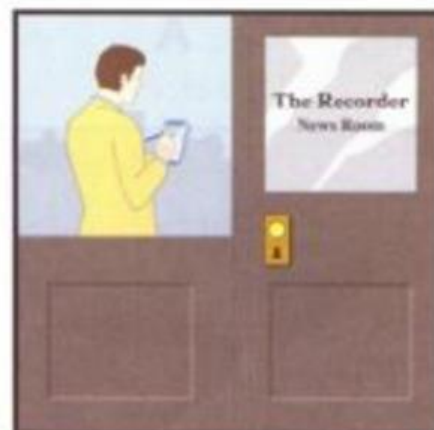
What's Sue's brother's job?



A ☐

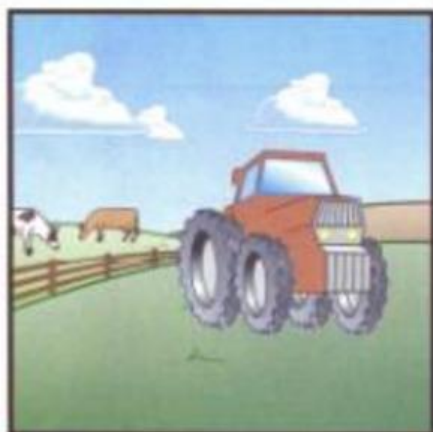


B ☒



C ☐

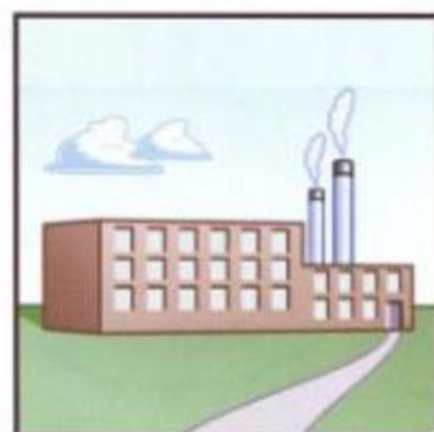
1 Where does her brother work?



A ☐



B ☐



C ☐

2 How does he go to work?



A ☐



B ☐



C ☐

3 When does he start work?



A ☐



B ☐



C ☐

4 What does he do for lunch?



A ☐

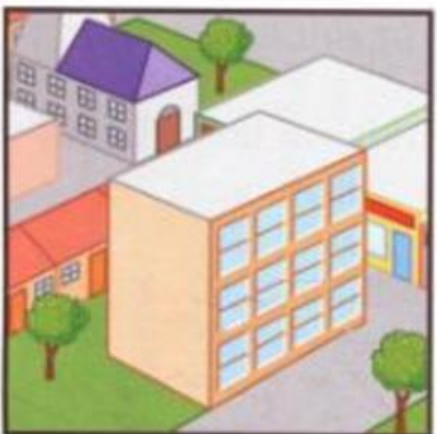


B ☐

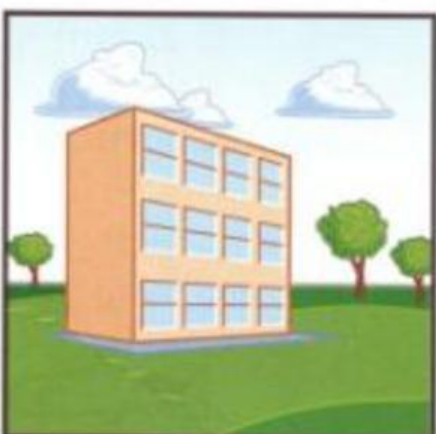


C ☐

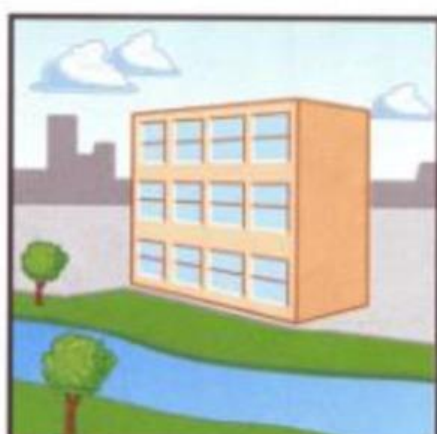
5 What did he do before he started this job?



A ☐



B ☐



C ☐