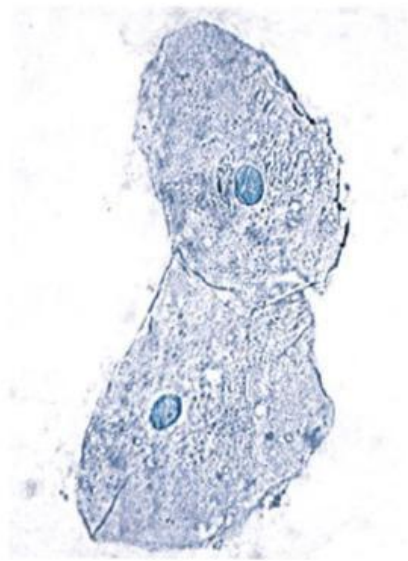
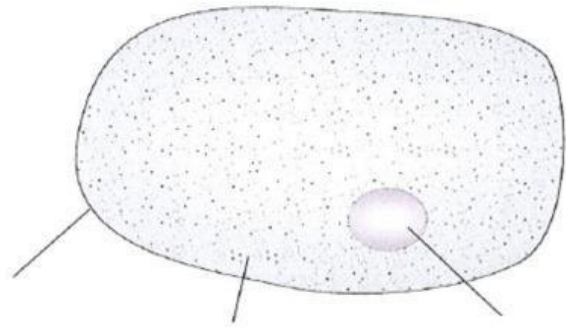


## Animal cells:

All animals are made of cells. No-one knows exactly how many cells there are in the human body, but one estimate is about 100 trillion. That is 1000000000000000 cells. Like plant cells, animal cells have a cell membrane, cytoplasm and a nucleus.



These cells came from the inside of a person's mouth. They have been colored with a blue dye.

### Exercise 2:

A. Name the part of an animal cell that matches each of these descriptions.

1	This part controls the activities of the cell.	.....
2	This is a jelly-like substance where chemical reactions take place.	.....
3	This controls what enters and leaves the cell.	.....

B. Name three structures that are found in plant cells, but not in animal cells.

.....	.....	.....
-------	-------	-------

C Name the part of the cells in the photograph that has absorbed the largest amount of the blue dye. ....