

## Plant cells:

All living things are made of tiny structures called **cells**. Most cells are too small to be seen with the naked eye. You can see cells using a **microscope**. The structure of a plant cell Plant cells are often larger than animal cells, so it is easier to see them under a microscope. The drawing shows a cell from a leaf.

**Cell wall:** All plant cells have a cell wall. The cell wall is strong and quite stiff. It holds the plant cell in shape.

**Cell membrane:** All cells have a cell membrane. The cell membrane is very thin and flexible. It controls what enters and leaves the cell.

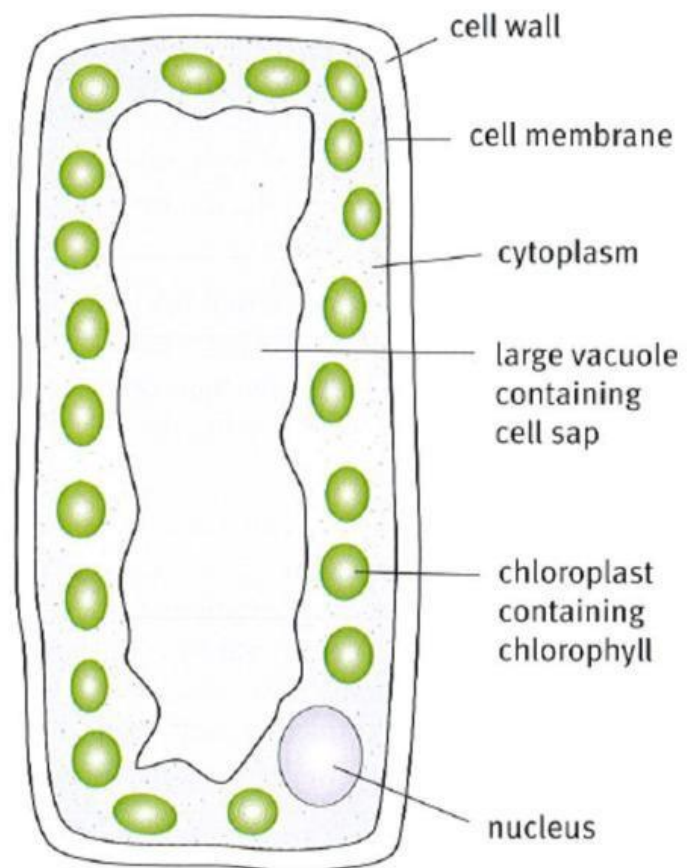
**Cytoplasm:** All cells have cytoplasm. It is a jelly-like substance. Chemical reactions happen inside the jelly. These reactions keep the cell alive.

**Nucleus:** Plant cells have a nucleus. The nucleus contains chromosomes. It controls the activities of the cell.

**Large vacuole:** Many plant cells have a large vacuole. It is a fluid-filled space in the cell.

**Chloroplast:** Plant cells that are in the sunlight often contain chloroplasts. This is where plants make their food.

Chloroplasts look green because they contain a green substance called chlorophyll.



## Summary:

- All living organisms are made of cells.
- All plant cells contain a cell wall, cell membrane, cytoplasm, nucleus and vacuole.
- Plant cells in the light may also contain chloroplasts.