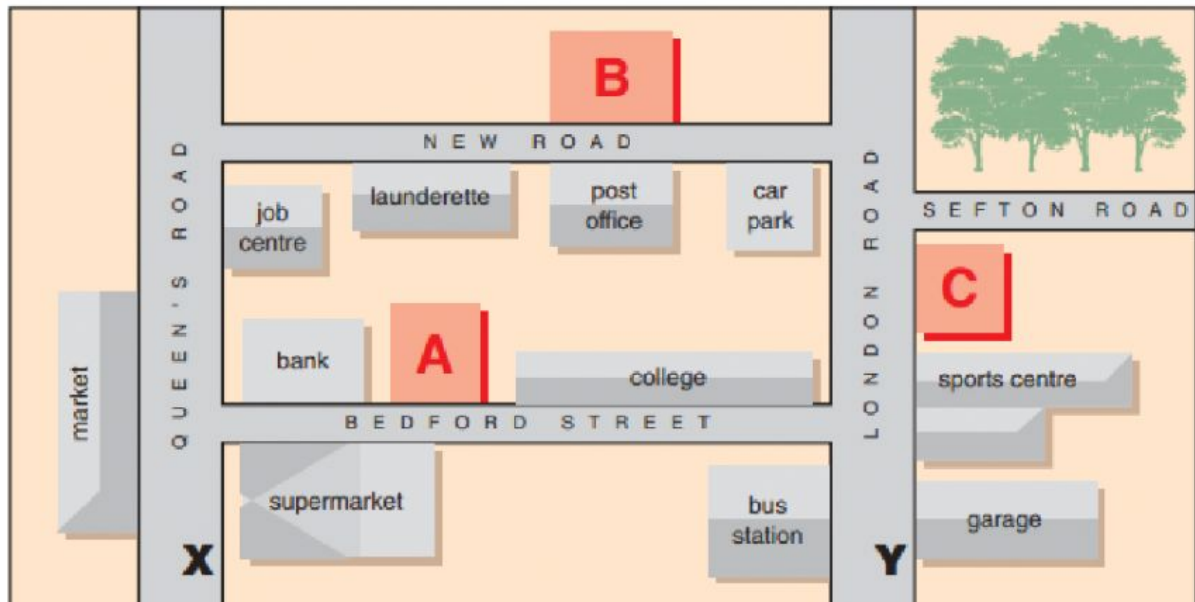


Introducing directions



Activity A

Listening 1
[click here](#)

Listening 2
[click here](#)

Listening 3
[click here](#)



3 Listen. Where are these places on the map? Write the correct letter – A, B or C.

Cinema

Chemist's

Café

Activity B • Understanding directions

Maria is new to the neighbourhood. She is talking to Sahra, her neighbour.

Listening 4

[click here](#)



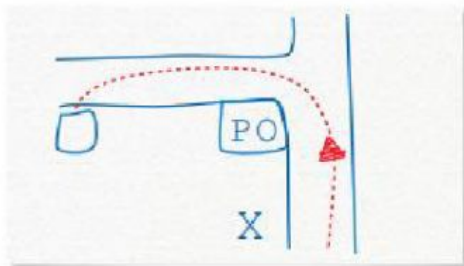
1 Listen. Where does Maria want to go?



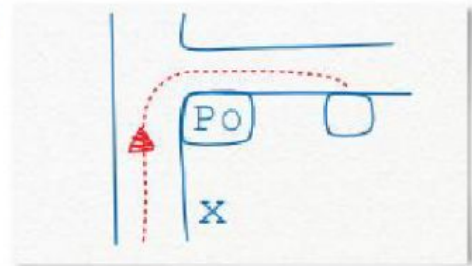
2 Listen again. Which map does Sahra draw?



A



B



Read the sentences below.

Go straight on.

Turn right at the post office.

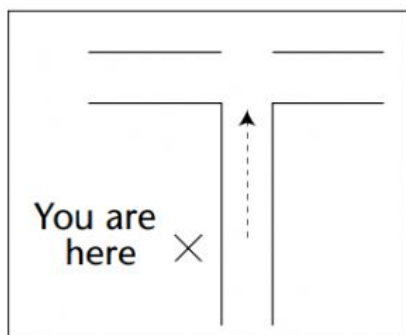
Turn left at the post office.

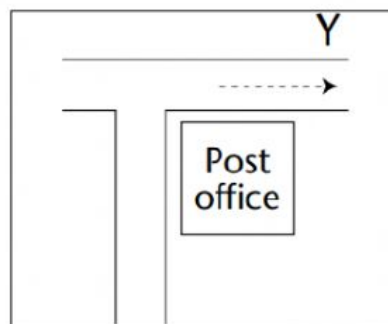
It's on the right.

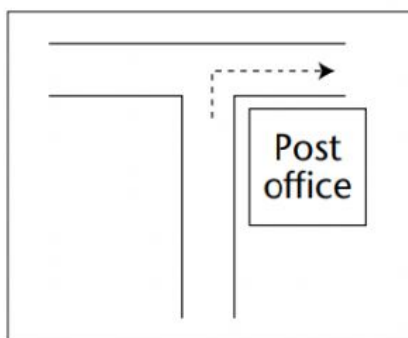
It's on the left.

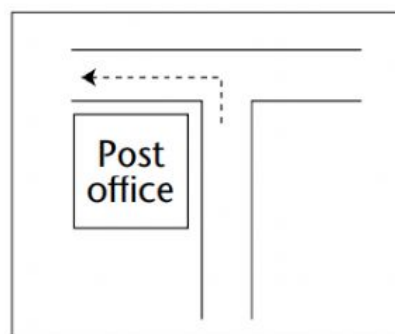


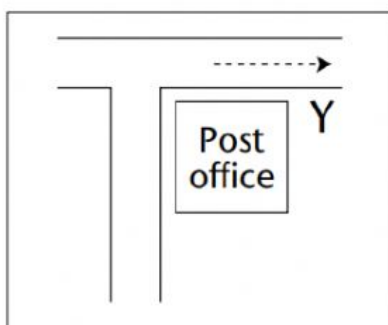
Activity C - Choose the correct directions for each map.



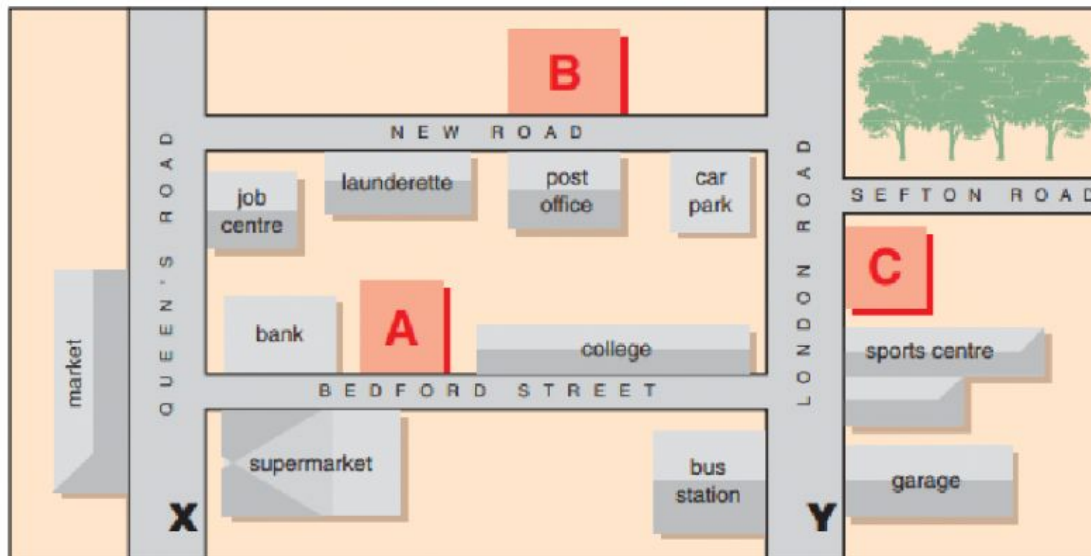








Activity D – Giving directions



Ask for and give directions to:

- the post office and the college (from **X**)
- the job centre and the bank (from **Y**).

Now fill in the gaps below.

Excuse ____! Where's ____ post office? (From X)

Go straight ____ . Turn right at the ____ . It's on the ____ .

____ me! Where is the job ____? (From Y)

Turn left at the bus ____ . Go ____ on . Turn ____ at the bank. It's ____ the right.

____! Where ____ the launderette? (From Y)

____ straight on. Turn left at the ____ . It's on the ____ .