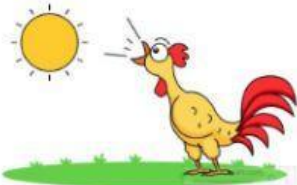


# Parts of the Day

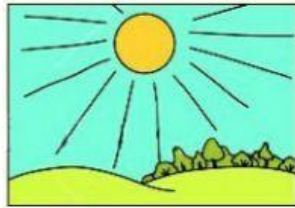
**Part 1. Look at the pictures. Write the times of day:**

evening      morning      night      afternoon

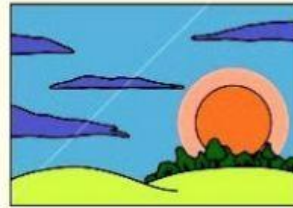
1.



2.



3.



4.



**Part 2. Unscramble the sentences:**

1. 6:00 get up I to in morning at the .

2. I afternoon to in work the go.

3. go in to the evening school I .

4. 10:00pm we the park exercise in night at