

Name:

Date:

Class:

EXCRETORY SYSTEM WORKSHEET

Assessment Objectives

To analyze human excretory organs and to understand the diseases of human excretory organ as well as maintain the health of excretory system.

Learning Objectives

- To describe the organs of human excretory system*
- To describe the function of excretory system*
- To explain the structure and function of kidneys, lungs, liver, and skin as the organs of excretory system*
- To identify the diseases of human excretory system*

Worksheet Instructions

- Click the link provided below to review on what you have learnt so far by playing the game on wordwall*
- Part A is a right or wrong question, tick on either the right or wrong box to match whether the statement is correct or wrong*
- Part B is a matching question, drag the answer that you think suits the arrow*
- Part C is fill-in-the-blank question, fill the blank space with a simple answer*

Review game:

WORDWALL LINK

A. Tick on the box with the correct answer!

1. The organs of human excretory system are lungs, kidneys, liver, heart, and skin.

Right

Wrong

2. Sweat, urine, and carbon dioxide are the waste products of the excretory system.

Right

Wrong

3. Urea is the excretory product of the liver from excess lipid.

Right

Wrong

4. Excretion is the elimination of unused substances from the food that is not absorbed by the small intestines.

Right

Wrong

5. Sweat contains excess water, mineral salt, and urea.

Right

Wrong

6. Sweat glands in the skin of a human body are located in the dermis of the skin

Right

Wrong

7. The organ responsible for filtering the blood is the lung.

Right

Wrong

8. The formation of urine involves three stages that happens in the nephron, they are filtration, reabsorption, and secretion.

Right

Wrong

9. The filtering part of the nephron is called the glomerulus.

Right

Wrong

10. There are three parts of the nephron, they are glomerulus, Bowman's capsule, and loop of Henle

Right

Wrong

B. Drag the correct name for the parts that the arrow points!

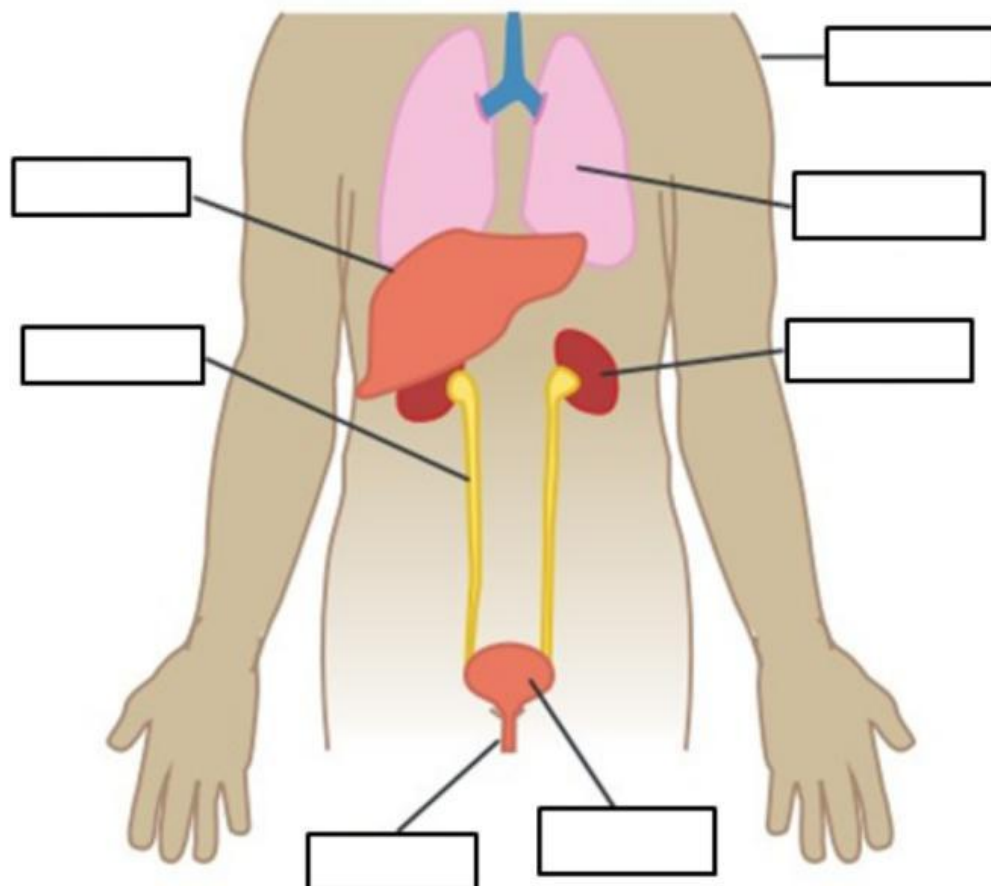
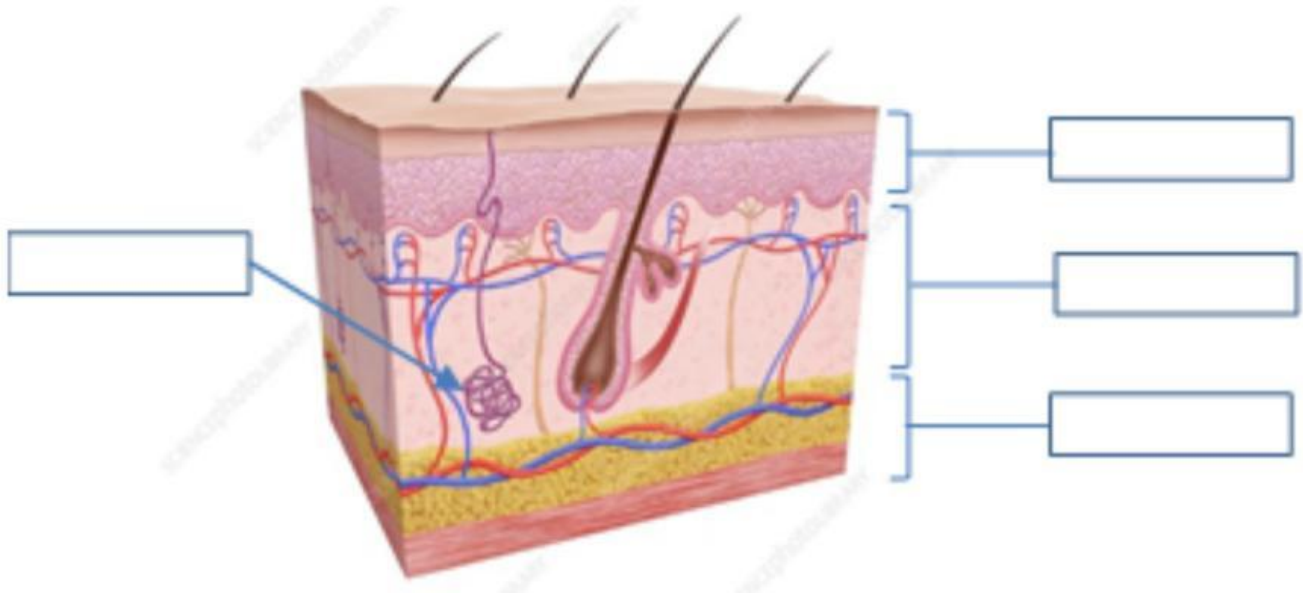
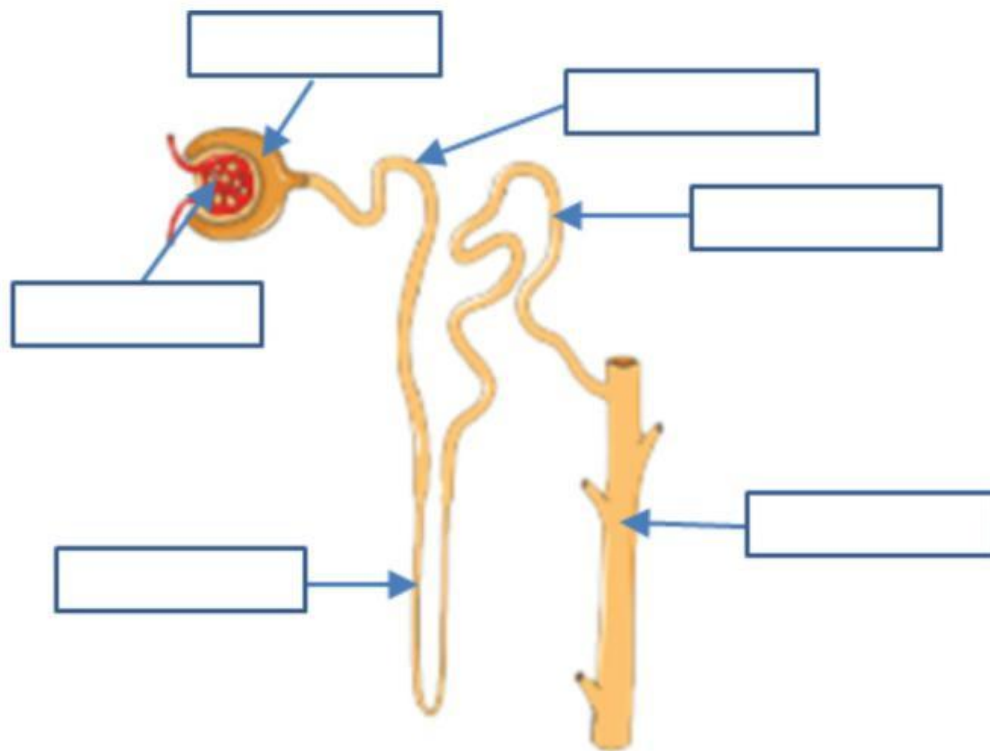
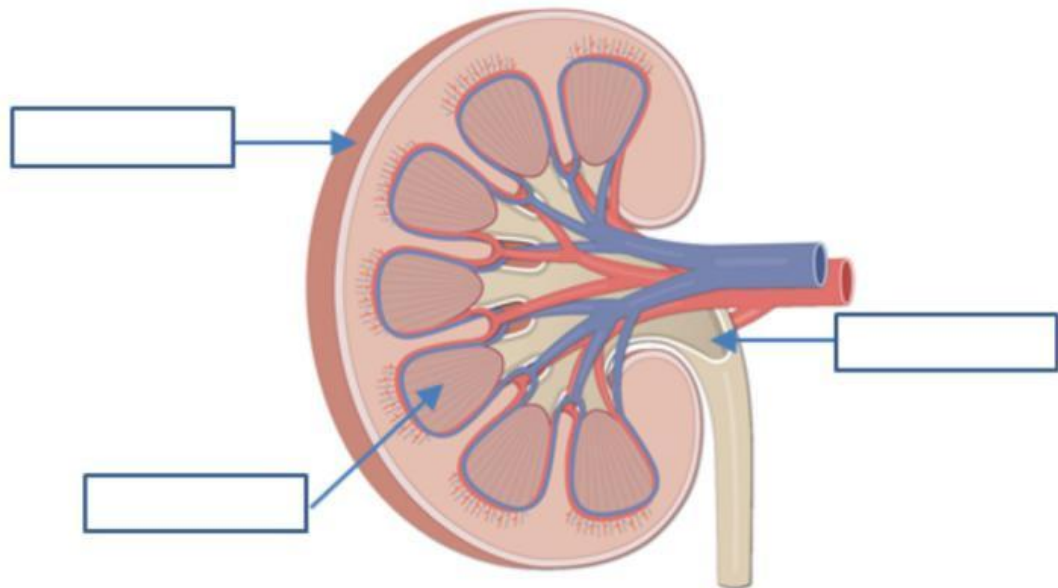


Figure 1 The excretory system of the body



Epidermis	Dermis	Endodermis	Sweat gland
Glomerulus	Ureter	Kidney	Renal pelvis
Collecting duct	Bowman's capsule	Liver	Urethra
Urinary gland	Renal cortex	Proximal convoluted tubule	Distal convoluted tubule
Medula	Skin	Loop of Henle	Lungs

C. Fill in the blank space with a simple answer!

1. Albuminuria is the presence of in the urine,
2. it is also called
3. The function of is to maintain osmotic pressure in the blood
4. is the condition where blood is present in the urine
5. There are two types of hematuria, they are and
6. You easily feel tired, sick, and thirsty, and you pee more often than usual. Then the doctor asks to check your urine. It appears that the sugar presence in your blood is higher than normal. That means, you have
7. and then the doctor diagnose you with
8. Anuria is the condition where you produce amount of urine
9. is a treatment to filter wastes and water from the blood