



# Modul Pembelajaran

## MATEMATIKA



Disusun Oleh :  
**Lia Sapitri**



# RAJIN PANGKAL PANDAI

**BILANGAN 1 SAMPAI  
DENGAN 10**



**PENJUMLAHAN**



**HITUNG BANYAK  
BUNGA**



# PERKENALAN TOKOH

Mereka akan menemani kalian belajar



Hai,namaKu  
Lala



Hai,namaKu  
Putri



Hai,namaKu  
Maria



Hai,namaKu  
Aisyah



Hai,namaKu  
Akira



Hai,namaKu  
Kevin



Hai,namaKu  
Naufal



Hai,namaKu  
Randi



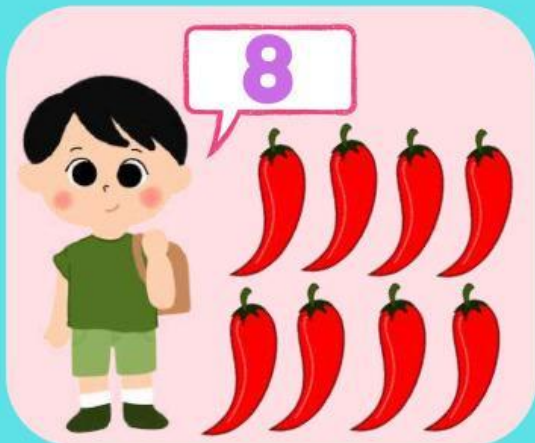
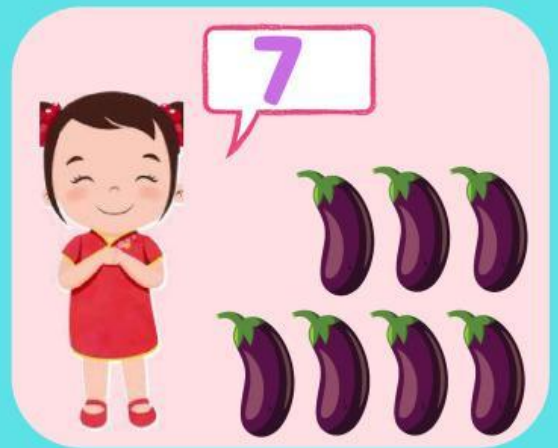
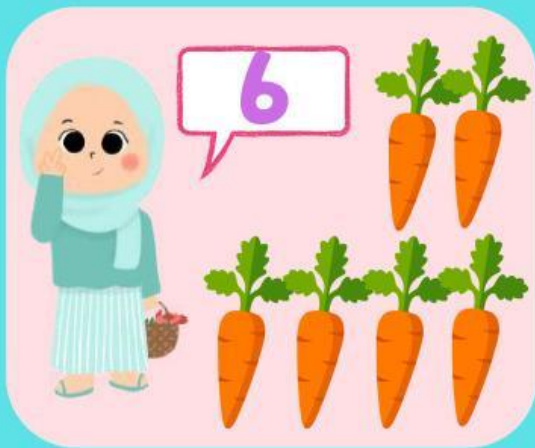
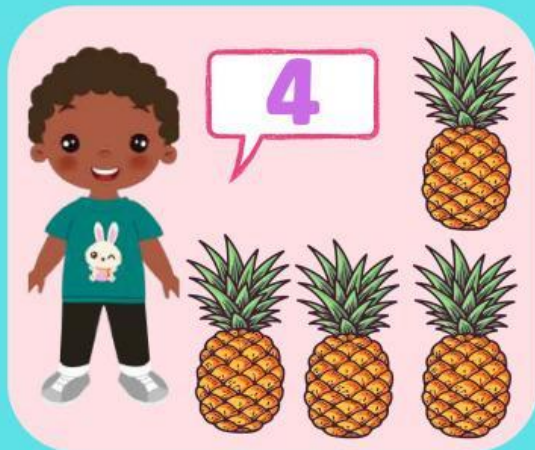
Hai,namaKu  
Adit



Hallo,namaKu  
Ibu Lia



# AYO MENGIRA 1 SAMPAI 10






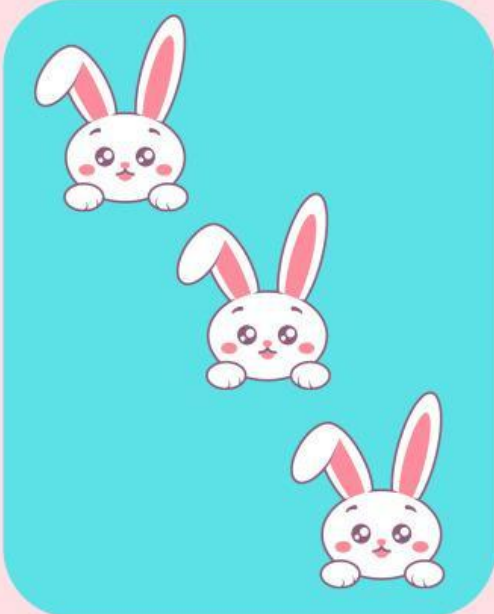
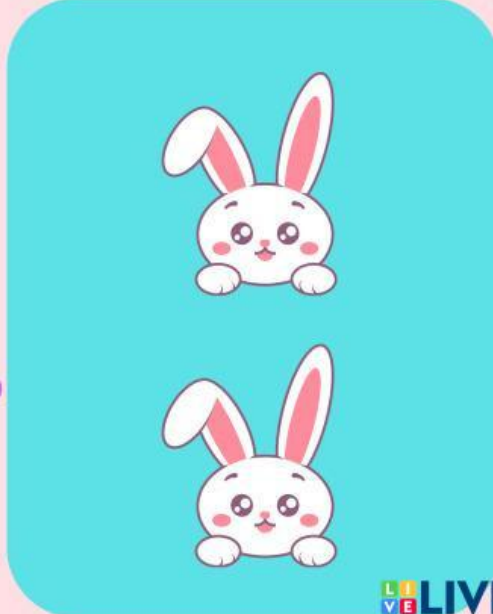

# AYO BERLATIH

1. HITUNGLAH BANYAK KELINCI BERIKUT  
TULIS HASILNYA PADA KOTAK YANG DI SEDIAKAN

A  +  = 

B  +  = 

C  +  = 

D  +  = 

## 2. HUBUNGAN BUNGA MATAHARI SESUAI JUMLAHNYA DENGAN MENARIK GARIS LURUS

