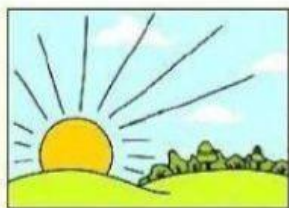
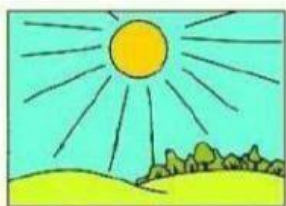


## MODULE 8: WHERE WERE YOU YESTERDAY? - PARTS OF THE DAY

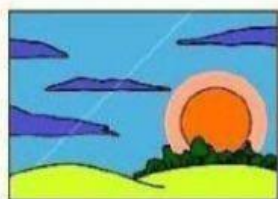
Match the parts of the day.



in the afternoon  
(sunshine)



in the morning  
(sunrise)

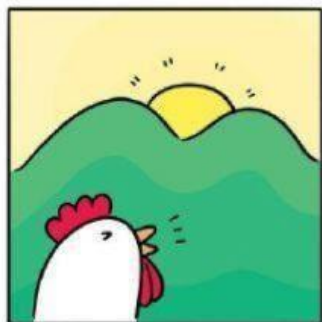


at night  
(moon and stars)

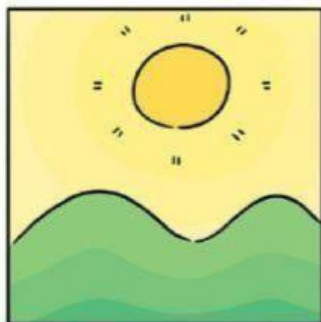


in the evening  
(sunset)

# Parts of the Day



in the morning  
(6:00am - 12:00pm)



in the afternoon  
(12:00pm - 6:00pm)



in the evening  
(6:00pm - 10:00pm)



at night  
(10:00pm - 6:00am)



My sister goes to school

9:00AM



Peter does his homework

8:00PM



They go to work

6:30AM



Susan plays basketball

4:30PM



My mother reads a book

0:30AM



My grandad plays the guitar

9:30PM



Kate listens to music

8:30PM



I play video games

5:30PM



My father wakes up

7:30AM