

An illustration of a woman with long brown hair, wearing a purple sports bra and brown leggings, performing a side stretch. She is reaching her right arm up and over her head, with her left hand resting on her hip. Her eyes are closed, and there are five small red hearts floating above her head. The background is a light beige color.

DESCRIPTION:

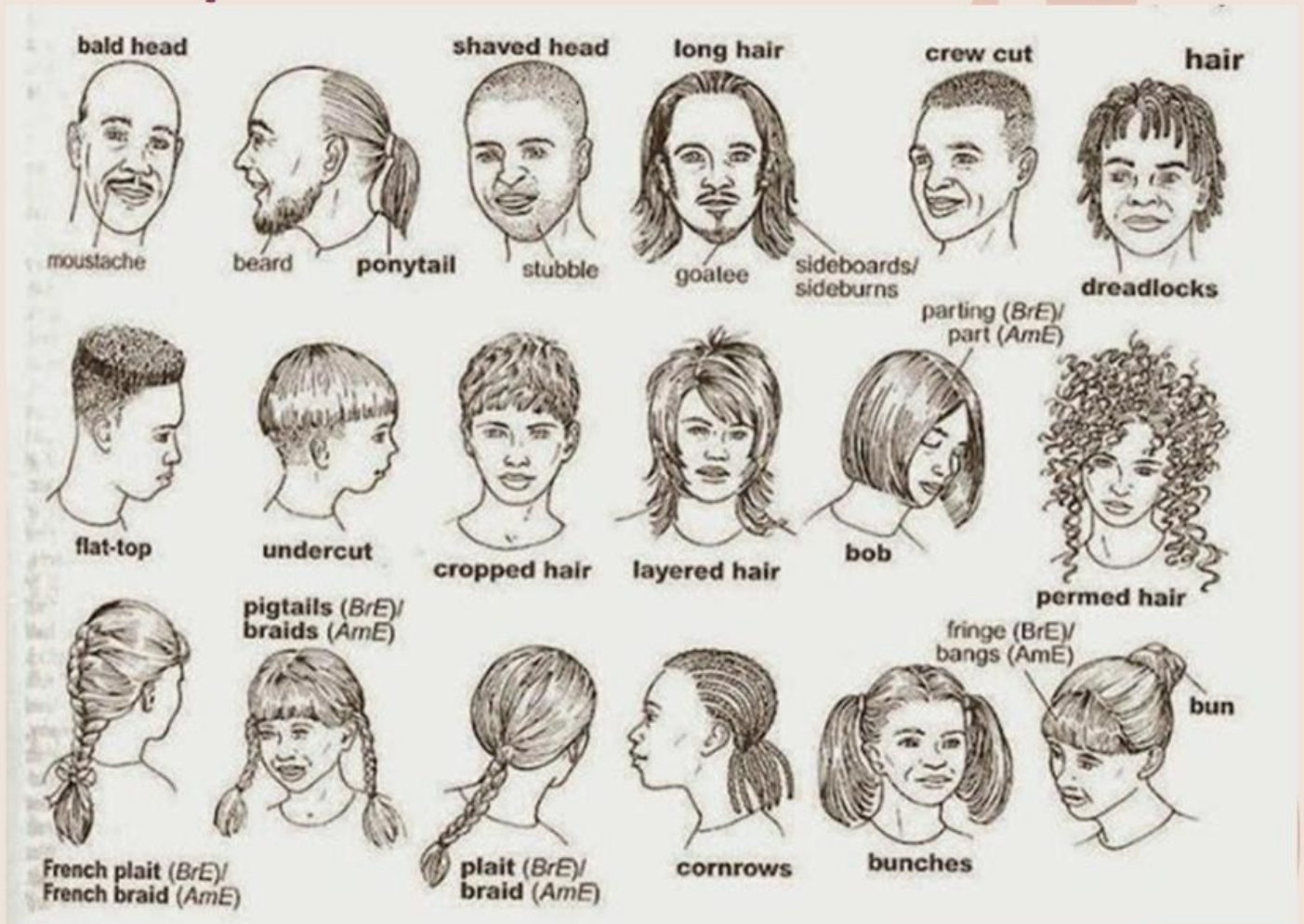
**body
and
personality**

ESL

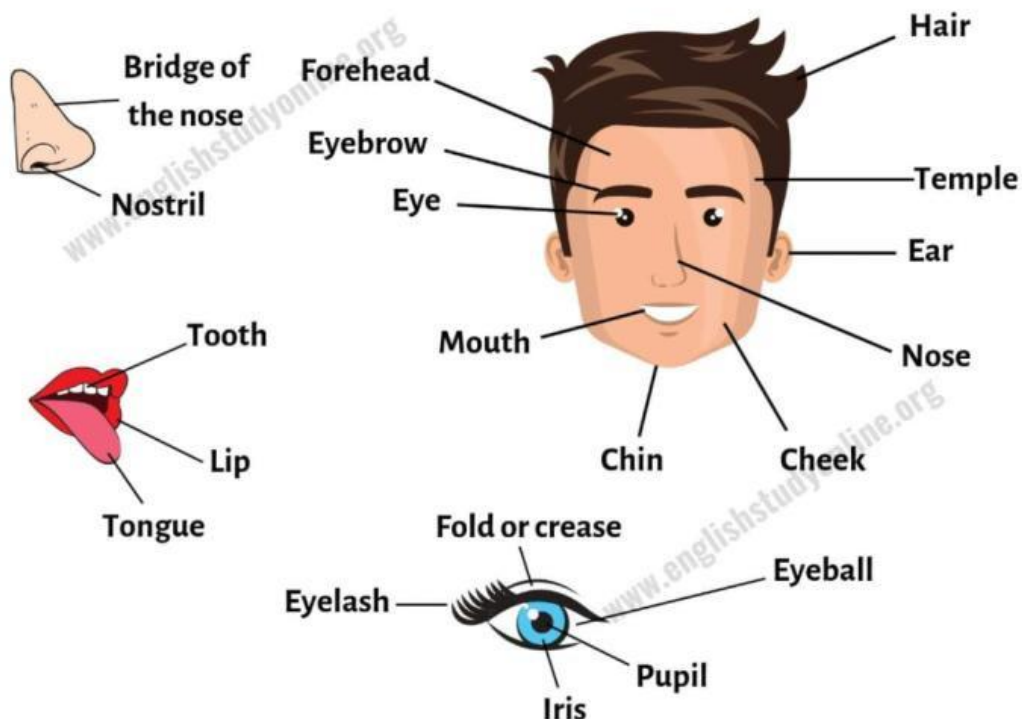
CARMEN PINELO

 **LIVEWORKSHEETS**

Hairstyle



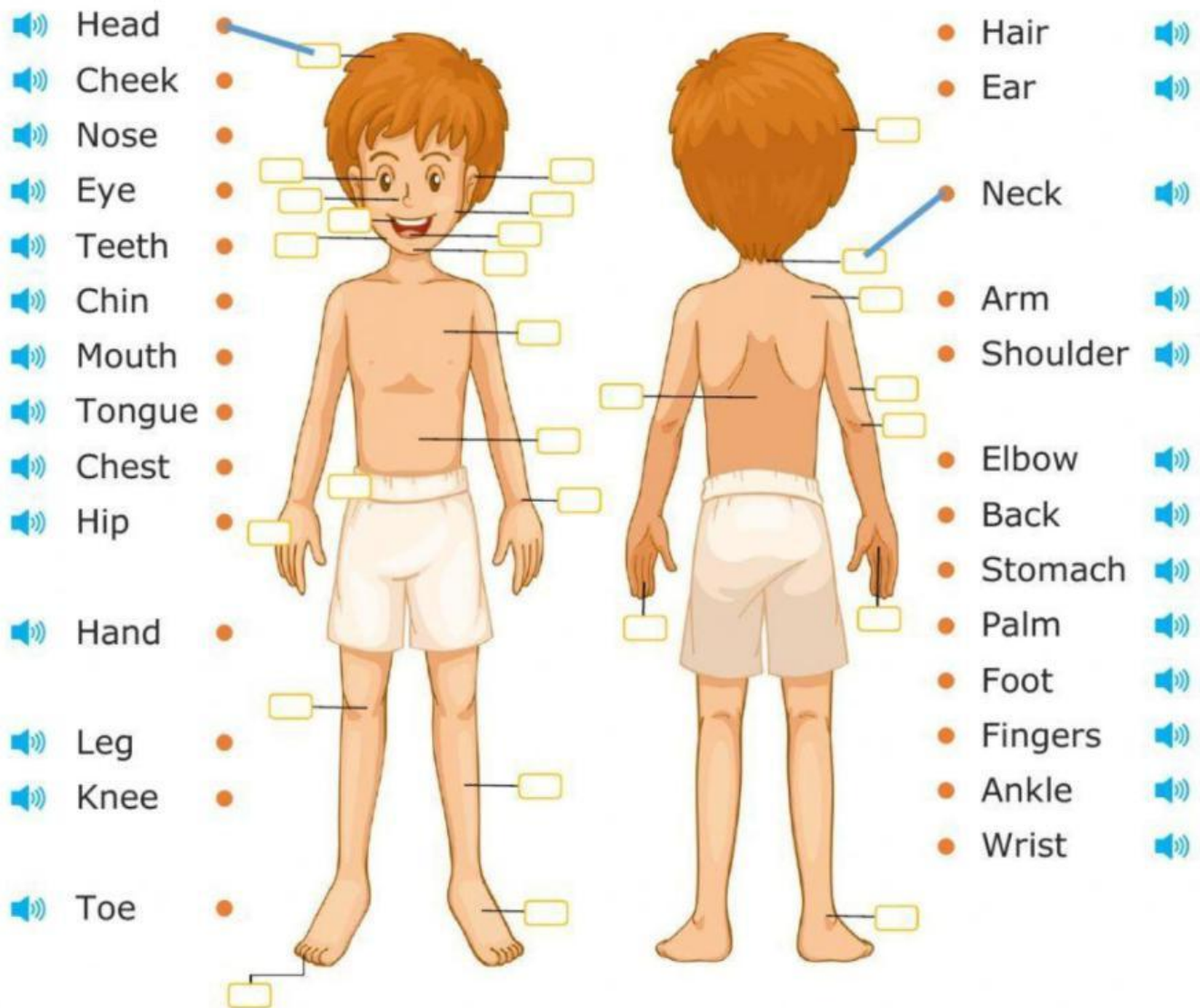
PARTS OF THE FACE



Body parts

Body parts vocabulary in English

Listen and join the correct part name



Organize these personality adjectives in positive and negative ones:



ADJECTIVES TO DESCRIBE CHARACTER AND PERSONALITY

1



Anxious



Naughty



Stubborn



Impatient



Sensitive



Intelligent



Nice



Emotional



Bad-tempered



Nervous



Mean



Distracted



Dishonest



Rude



Discreet



Crazy



Cheeky



Cheerful



Energetic



Untidy



Pessimistic



Optimistic



Unpleasant



Talkative



Calm



Passionate



Proud



Sincere



Lazy



Lively



Funny



Silly



Shy



Determined



Versatile



Sociable



Worried



Thoughtful

Guess who

Read the following text.

Underline the vocabulary related to physical description in blue and the vocabulary related to personlity description in green.

Do you know who is it describing?

This actress is well-known for her classic and refined beauty. She has a soft, oval-shaped face with a delicate jawline and high cheekbones that give her a timeless look. Her eyes are a warm shade of brown, large and expressive, often showing kindness and intelligence. Her eyebrows are well-defined, framing her face perfectly and adding to her natural elegance. Her nose is straight and proportional, while her lips are gently full, usually adorned with a subtle smile.

Her hair color has changed over the years, but she is often recognized with a rich brown shade that complements her fair skin. She has worn it in various styles, from long and wavy to short and chic, and even tried a famous pixie cut that highlighted her fine features. Her hair texture is naturally straight, which she sometimes wears sleek or loosely styled, giving her a look of effortless sophistication.

In terms of build, she has a slim, petite figure with graceful posture, standing at an average height with a slender frame that reflects her elegant fashion sense. Known for her poise and graceful movements, she brings a certain sense of class to her public appearances. Her style is often described as polished and sophisticated, favoring simple yet classic outfits that enhance her natural beauty rather than overshadowing it.

Guess who

Read the following text.

Underline the vocabulary related to physical description in blue and the vocabulary related to personality description in green.

Do you know who is it describing?

This actress is well-known for her classic and refined beauty. She has a soft, oval-shaped face with a delicate jawline and high cheekbones that give her a timeless look. Her eyes are a warm shade of brown, large and expressive, often showing kindness and intelligence. Her eyebrows are well-defined, framing her face perfectly and adding to her natural elegance. Her nose is straight and proportional, while her lips are gently full, usually adorned with a subtle smile.

Her hair color has changed over the years, but she is often recognized with a rich brown shade that complements her fair skin. She has worn it in various styles, from long and wavy to short and chic, and even tried a famous pixie cut that highlighted her fine features. Her hair texture is naturally straight, which she sometimes wears sleek or loosely styled, giving her a look of effortless sophistication.

In terms of build, she has a slim, petite figure with graceful posture, standing at an average height with a slender frame that reflects her elegant fashion sense. Known for her poise and graceful movements, she brings a certain sense of class to her public appearances. Her style is often described as polished and sophisticated, favoring simple yet classic outfits that enhance her natural beauty rather than overshadowing it.

Guess who

Now listen to the audio to get the last hints



Now read the listening script and think again.

Guess who

Script:

Beyond her appearance, she is also admired for her intelligence and sense of activism. This actress attended a prestigious university and is passionate about issues like gender equality and education.

She gained fame at a young age for her role as a strong, intelligent young girl in a popular movie series. Since then, she has continued to inspire fans worldwide through both her work in film and her efforts to make the world a better place.

Can you guess who she is?

Guess who



**Emma
Watson**

Now describe a famous celebrity in detail.

Guess who

You can play 'Guess who' game here

