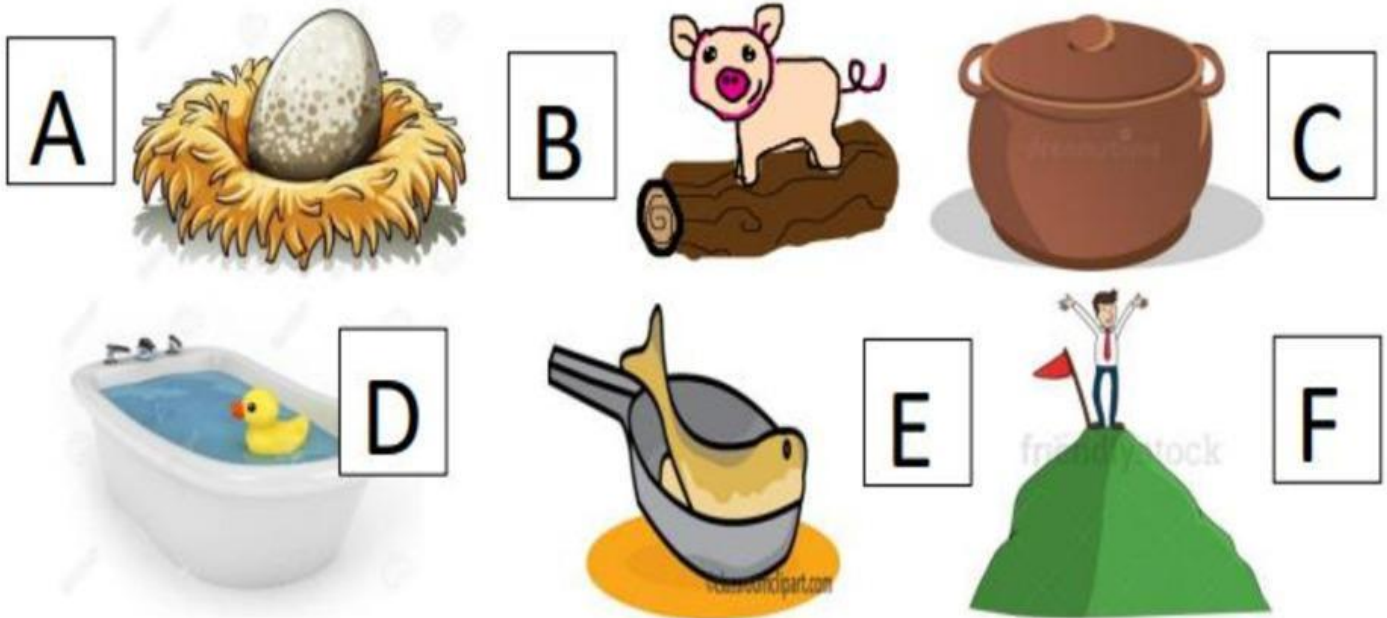


Look at the pictures. Read the phrases below. Write the letter of the correct picture beside each phrase.



_____ an egg in the nest

_____ a piglet on the log

_____ a lid on the pot

_____ a duck on the tub

_____ a fish in the vat

_____ a man on the hill

Match the pictures to the correct phrases.



- big yellow sun



- six fat men



- dog under the table



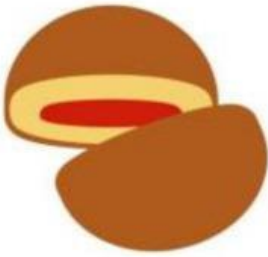
- tag on the cap



- a fat duck



- pen on the pad



- sick lad on the bed



- six big buttons



- jam on the bun



- piglet on the mud

Write a phrase for each picture.



Match the phrase with the correct picture.

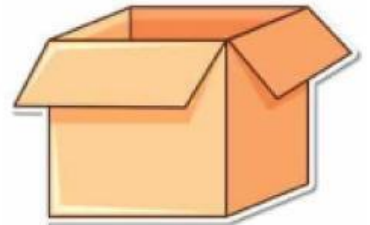
have a bed



in a box



the bin



on a bun



it is bad



the bat



Draw a line to match the phrase to the picture.

vet and cat



zip it up



sun on van

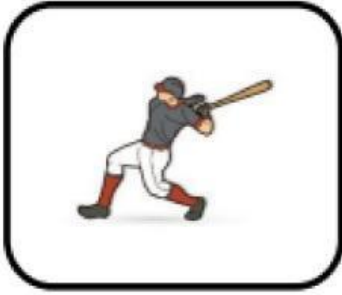


pin can pop



mop it up





The cat is fat.



The van is tan.



Max can bat



Pam is on a mat.



Dad had a nap.