

**Alreslaha billengual school**  
**Science department**  
**Grade7/quarter 3**  
**Quiz2**

**1 : A group of similar types of cells that work together to do a specific job is called a/an \_\_\_\_\_.**

- A. tissue
- b. organ
- c. stem cell
- d. organ system

**2: A group of different tissues working together to do a job is called a/an \_\_\_\_\_.**

- A. tissue
- b. organ
- c. stem cell
- d. organ system

**3. A group of different organs working together to do a series of jobs is called a/an \_\_\_\_\_.**

- A. tissue
- B. organ
- C. stem cell
- D. organ system

**4. What is the correct order of organization**

- A. tissues-cells-organs-organ systems-organism
- B. cell-tissue-organs-organ systems-organism
- C. organism-cells-tissues-organ systems-organism
- D. tissues-cells-organs-organ systems-organism

**5. When many organ systems work together it can form...**

- A. organ
- b. cells
- C. organ system
- D. organism

**6. When many organ systems work together it can form...**

- A. organ
- B. cells

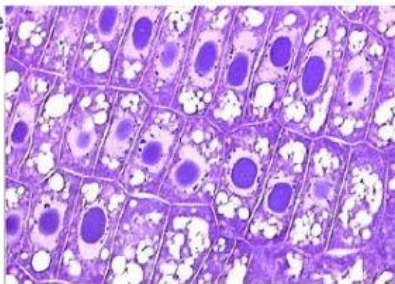
- C.organ system
- D.organism

7. The \_\_\_\_\_ is the basic unit of life

- A.organ
- B.cell
- C.atom
- D.tissue

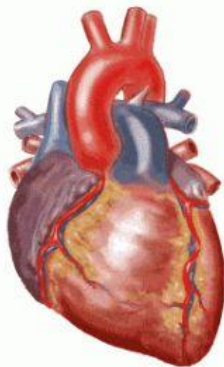
8. This is a example of .....

- A.organ
- B.cell
- C.atom
- D.tissue



9. This is a example of .....

- A.organ
- B.cell
- C.atom
- D.tissue



10: This is a example of .....

- A.organ
- B.cell
- C.atom
- D.tissue

