

## 8

## AT SCHOOL

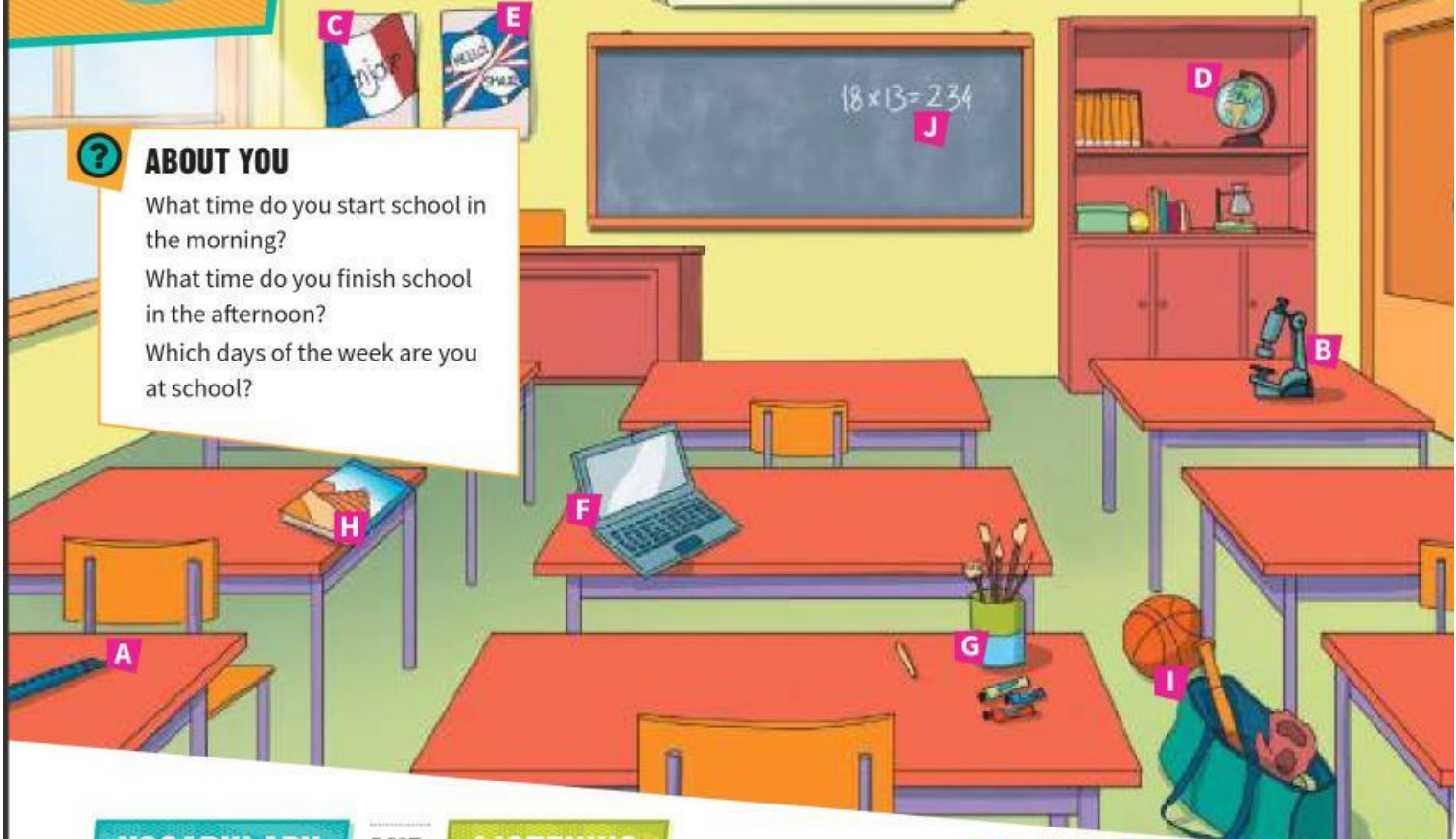


## ABOUT YOU

What time do you start school in the morning?

What time do you finish school in the afternoon?

Which days of the week are you at school?



VOCABULARY

AND

LISTENING

LIVEWORKSHEETS

## School subjects

- 1 Match the school subjects to the objects in the picture A-J.

EP

art	English	French	geography
history	IT	maths	music
PE	science		

76

Listen and check. Then repeat.

- 2 What subjects are in your school timetable? What time are they? Ask and answer.

When is maths?

At 10 o'clock.

77

- 3 Listen to the teacher talking about changes in the school timetable. Write the subjects you hear.

77

- 4 Listen again to the teacher talking about the timetable changes and complete the table.

	no change	new subject
Monday: double maths	✓	✗
Tuesday: art		
Tuesday: IT		
Wednesday: maths		
Wednesday: PE		
Thursday: geography		

- 5 What are your favourite school subjects? Tell your partner.