

# READING STRATEGIES 4

## REFERENTS

Referents "refer" to something else in the reading. They are often pronouns (he, her, they, that, which, etc.) Read the texts and answer the questions.

1. "I would not dream of collecting shells with living creatures in them or diving for them, but once their occupants have left, why should I not collect them?" If one bases this argument on the amount of luggage that can be carried home by one man, the sum beauty of whose work is often greater than its natural parts, **it** becomes very convincing indeed.

What does "it" in (red and bold) refer to?

- A. Cooke's luggage
- B. Cooke's argument
- C. the beauty of Cooke's work
- D. the reason for Cooke's trips

2. There is a harmony of color, shape and structure in the two long flower borders that line the paved path which crosses the garden from east to west. Much of **this** is due to the previous owners who were keen gardeners, and who left plants that appealed to Susan.

What does "this" in (red and bold) refer to?

- A. the position of the path
- B. the number of wild plants
- C. the position of the garden
- D. the harmony of the planting

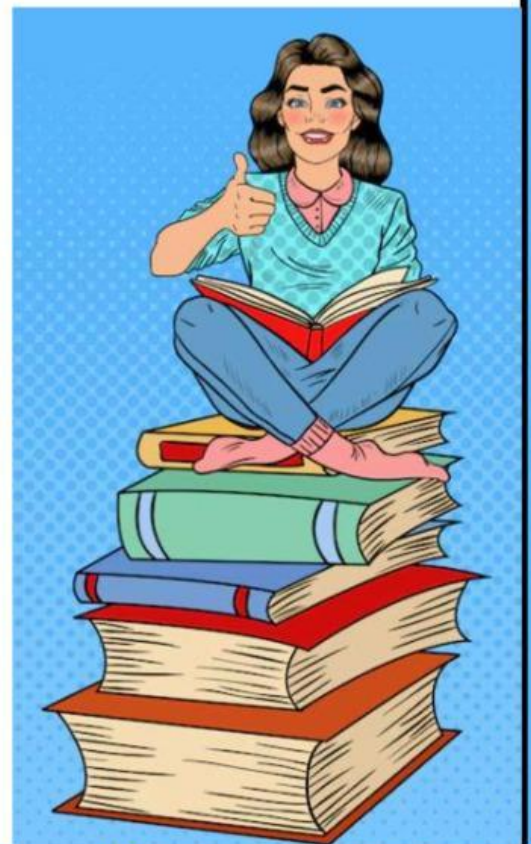
3. "Ever been inside a tannery?"

"Not yet."

"Well, you've got to go to a tannery if you're going to write about leather. I'll set **that** up for you if you'd like.

What does "that" in (red and bold) refer to?

- A. the tannery business
- B. a visit to a tannery
- C. writing about leather
- D. working with leather





4. My advice to Gary would be: if you start chasing two hares, you end up catching neither, so chase the hare you know you're going to catch. He understood when I said to him: "Gary, if you're going to get anywhere in life, you've got to do it by the age of 30. If you haven't done **it** by then, it's too late.

What does "it" in (red and bold) refer to?

- A. chosen a profession
- B. achieved success
- C. caught a hare
- D. lived your life

5. ...the question "How do you do the same play every night?" is answered by a simple comparison with the familiar car journey you take every day, which presents a slightly different challenge each time. "I was trying to get everyone to understand **it** isn't this extraordinary mystery and you're not visited by some spiritual inspiration every night."

What does "it" in (red and bold) refer to?

- A. facing a different challenge
- B. taking a familiar car journey
- C. acting in the same play every night
- D. working with fellow actors

6. We go to a nearby café to talk. Why, I asked, had he become a guide? "Well, I used to organize a lot of courses at the university I worked for. **It** was quite stressful."

What does "it" in (red and bold) refer to?

- A. showing students around London
- B. performing in front of a group
- C. becoming a guide
- D. arranging courses

